



## INTERNATIONAL APPLICATION PUBLISHED UNDER THE PATENT COOPERATION TREATY (PCT)

|  |           |  |
|--|-----------|--|
| <b>(51) International Patent Classification <sup>6</sup>:</b><br><b>C12Q 1/68, 1/70, C12P 19/34, C07H 21/02, 21/04</b>   | <b>A1</b> | <b>(11) International Publication Number:</b> <b>WO 98/04745</b><br><b>(43) International Publication Date:</b> 5 February 1998 (05.02.98)   |
| <b>(21) International Application Number:</b> PCT/US97/13390<br><b>(22) International Filing Date:</b> 30 July 1997 (30.07.97)<br><b>(30) Priority Data:</b><br>08/690,495                      31 July 1996 (31.07.96)                      US<br><b>(71) Applicant:</b> MOUNT SINAI SCHOOL OF MEDICINE OF THE CITY UNIVERSITY OF NEW YORK [US/US]; One Gustave L. Levy Place, New York, NY 10029-6574 (US).<br><b>(72) Inventors:</b> ZHANG, David, Y.; 82-24 165th Street, Jamaica, NY 11432 (US). BRANDWEIN, Margaret; 182-20 Hovenden Road, Jamaica Estates, NY 11432 (US).<br><b>(74) Agents:</b> SEIDE, Rochelle, K. et al.; Brumbaugh, Graves, Donohue & Raymond, 30 Rockefeller Plaza, New York, NY 10112 (US).   |           | <b>(81) Designated States:</b> JP, European patent (AT, BE, CH, DE, DK, ES, FI, FR, GB, GR, IE, IT, LU, MC, NL, PT, SE).<br><br><b>Published</b><br><i>With international search report.</i> |
| <b>(54) Title:</b> NUCLEIC ACID AMPLIFICATION METHOD: HYBRIDIZATION SIGNAL AMPLIFICATION METHOD (HSAM)   |           |  |
| <b>(57) Abstract</b><br><br>An improved method allowing for rapid sensitive and standardized detection of a target nucleic acid from a pathogenic microorganism or virus or normal or abnormal gene in a sample is provided. The method involves hybridizing a target nucleic acid to several non-overlapping oligonucleotide probes that hybridize to adjacent regions in the target nucleic acid, the probes being referred to capture/amplification probes and amplification probes, respectively, in the presence of paramagnetic beads coated with a ligand binding moiety. Through the binding of a ligand attached to one end of the capture/amplification probe and the specific hybridization of portions of the probes to adjacent sequences in the target nucleic acid, a complex comprising the target nucleic acid, the probes and the paramagnetic beads is formed. The probes may then be ligated together to form a contiguous ligated amplification sequence bound to the beads, which complex may be denatured to remove the target nucleic acid and unligated probes. Alternatively, separate capture and amplification probes may be used which form continuous full-length or circular probes, and may be directly detected or amplified using a suitable amplification technique, e.g., PCR, RAM or HSAM for detection. The detection of the ligated amplification sequence, either directly or following amplification of the ligated amplification sequence, indicates the presence of the target nucleic acid in a sample. Methods for the detection of the ligated amplification sequence, including hybridization signal amplification method and ramification-extension amplification method, are also provided. |           |  |

**FOR THE PURPOSES OF INFORMATION ONLY**

Codes used to identify States party to the PCT on the front pages of pamphlets publishing international applications under the PCT.

|    |                          |    |  |    |  |    |                          |
|----|--------------------------|----|--|----|--|----|--------------------------|
| AL | Albania                  | ES | Spain                                    | LS | Lesotho                                      | SI | Slovenia                 |
| AM | Armenia                  | FI | Finland                                  | LT | Lithuania                                    | SK | Slovakia                 |
| AT | Austria                  | FR | France                                   | LU | Luxembourg                                   | SN | Senegal                  |
| AU | Australia                | GA | Gabon                                    | LV | Latvia                                       | SZ | Swaziland                |
| AZ | Azerbaijan               | GB | United Kingdom                           | MC | Monaco                                       | TD | Chad                     |
| BA | Bosnia and Herzegovina   | GE | Georgia                                  | MD | Republic of Moldova                          | TG | Togo                     |
| BB | Barbados                 | GH | Ghana                                    | MG | Madagascar                                   | TJ | Tajikistan               |
| BE | Belgium                  | GN | Guinea                                   | MK | The former Yugoslav<br>Republic of Macedonia | TM | Turkmenistan             |
| BF | Burkina Faso             | GR | Greece                                   |    |  | TR | Turkey                   |
| BG | Bulgaria                 | HU | Hungary                                  | ML | Mali   | TT | Trinidad and Tobago      |
| BJ | Benin                    | IE | Ireland                                  | MN | Mongolia                                     | UA | Ukraine                  |
| BR | Brazil                   | IL | Israel                                   | MR | Mauritania                                   | UG | Uganda                   |
| BY | Belarus                  | IS | Iceland                                  | MW | Malawi                                       | US | United States of America |
| CA | Canada                   | IT | Italy                                    | MX | Mexico                                       | UZ | Uzbekistan               |
| CF | Central African Republic | JP | Japan                                    | NE | Niger  | VN | Viet Nam                 |
| CG | Congo                    | KE | Kenya                                    | NL | Netherlands                                  | YU | Yugoslavia               |
| CH | Switzerland              | KG | Kyrgyzstan                               | NO | Norway                                       | ZW | Zimbabwe                 |
| CI | Côte d'Ivoire            | KP | Democratic People's<br>Republic of Korea | NZ | New Zealand                                  |    |                          |
| CM | Cameroon                 |    |  | PL | Poland                                       |    |                          |
| CN | China                    | KR | Republic of Korea                        | PT | Portugal                                     |    |                          |
| CU | Cuba                     | KZ | Kazakstan                                | RO | Romania                                      |    |                          |
| CZ | Czech Republic           | LC | Saint Lucia                              | RU | Russian Federation                           |    |                          |
| DE | Germany                  | LJ | Liechtenstein                            | SD | Sudan  |    |                          |
| DK | Denmark                  | LK | Sri Lanka                                | SE | Sweden                                       |    |                          |
| EE | Estonia                  | LR | Liberia                                  | SG | Singapore                                    |    |                          |

## Description

### Nucleic Acid Amplification Method: Hybridization Signal Amplification Method (HSAM)

#### Background of the Invention

The present application is a continuation-in-part of pending International Application PCT/US95/07671 filed June 14, 1995, and corresponding to pending U.S. application Serial No. 08/596,331, which application is a continuation-in-part of pending U.S. Application Serial No. 08/263,937 filed  
5 June 22, 1994.

#### Technical Field

The present invention relates to assays and kits for carrying out said assays for the rapid, automated detection of infectious pathogenic agents and normal and  
10 abnormal genes.

#### Background of the Invention

A number of techniques have been developed recently to meet the demands for rapid and accurate detection of infectious agents, such as viruses, bacteria and  
15 fungi, and detection of normal and abnormal genes. Such techniques, which generally involve the amplification and detection (and subsequent measurement) of minute amounts of target nucleic acids (either DNA or RNA) in a test sample, include inter alia the polymerase chain reaction (PCR) (Saiki, et al., Science  
230:1350, 1985; Saiki et al., Science 239:487, 1988; PCR Technology, Henry A.  
20 Erlich, ed., Stockton Press, 1989; Patterson et al., Science 260:976, 1993), ligase chain reaction (LCR) (Barany, Proc. Natl. Acad. Sci. USA 88:189, 1991), strand displacement amplification (SDA) (Walker et al., Nucl. Acids Res. 20:1691, 1992),

Q $\beta$  replicase amplification (Q $\beta$ RA) (Wu *et al.*, Proc. Natl. Acad. Sci. USA  
89:11769, 1992; Lomeli *et al.*, Clin. Chem. 35:1826, 1989) and self-sustained  
replication (3SR) (Guatelli *et al.*, Proc. Natl. Acad. Sci. USA 87:1874-1878, 1990).  
While all of these techniques are powerful tools for the detection and identification  
5 of minute amounts of a target nucleic acid in a sample, they all suffer from various  
problems, which have prevented their general applicability in the clinical  
laboratory setting for use in routine diagnostic techniques.

One of the most difficult problems is preparation of the target nucleic acid  
prior to carrying out its amplification and detection. This process is time and labor  
10 intensive and, thus, generally unsuitable for a clinical setting, where rapid and  
accurate results are required. Another problem, especially for PCR and SDA, is  
that conditions for amplifying the target nucleic acid for subsequent detection and  
optional quantitation vary with each test, *i.e.*, there are no constant conditions  
favoring test standardization. This latter problem is especially critical for the  
15 quantitation of a target nucleic acid by competitive PCR and for the simultaneous  
detection of multiple target nucleic acids.

Circumvention of the aforementioned problems would allow for  
development of rapid standardized assays, utilizing the various techniques  
mentioned above, that would be particularly useful in performing epidemiologic  
20 investigations, as well as in the clinical laboratory setting for detecting pathogenic  
microorganisms and viruses in a patient sample. Such microorganisms cause  
infectious diseases that represent a major threat to human health. The development  
of standardized and automated analytical techniques and kits therefor, based on  
rapid and sensitive identification of target nucleic acids specific for an infectious  
25 disease agent would provide advantages over techniques involving immunologic or  
culture detection of bacteria and viruses.

Reagents may be designed to be specific for a particular organism or for a  
range of related organisms. These reagents could be utilized to directly assay

microbial genes conferring resistance to various antibiotics and virulence factors resulting in disease. Development of rapid standardized analytical techniques will aid in the selection of the proper treatment.

In some cases, assays having a moderate degree of sensitivity (but high  
5 specificity) may suffice, e.g., in initial screening tests. In other cases, great sensitivity (as well as specificity) is required, e.g., the detection of the HIV genome in infected blood may require finding the virus nucleic acid sequences present in a sample of one part per 10 to 100,000 human genome equivalents (Harper et al., Proc. Nat'l. Acad. Sci., USA 83:772, 1986).

10 Blood contaminants, including inter alia, HIV, HTLV-I, hepatitis B and hepatitis C, represent a serious threat to transfusion patients and the development of routine diagnostic tests involving the nucleic acids of these agents for the rapid and sensitive detection of such agents would be of great benefit in the clinical diagnostic agree laboratory. For example, the HIV genome can be detected in a  
15 blood sample using PCR techniques, either as an RNA molecule representing the free viral particle or as a DNA molecule representing the integrated provirus (Ou et al., Science 239:295, 1988; Murakawa et al., DNA 7:287, 1988).

In addition, epidemiologic investigations using classical culturing techniques have indicated that disseminated Mycobacterium avium-intracellulaire  
20 (MAI) infection is a complication of late-stage Acquired Immunodeficiency Syndrome (AIDS) in children and adults. The precise extent of the problem is not clear, however, since current cultural methods for detecting mycobacteria are cumbersome, slow and of questionable sensitivity. Thus, it would be desirable and highly beneficial to devise a rapid, sensitive and specific technique for MAI  
25 detection in order to provide a definitive picture of the involvement in HIV-infected and other immunosuppressed individuals. Such studies must involve molecular biological methodologies, based on detection of a target nucleic acid,

which have routinely been shown to be more sensitive than standard culture systems (Boddinghaus et al., J. Clin. Med. 28:1751, 1990).

Other applications for such techniques include detection and characterization of single gene genetic disorders in individuals and in populations (see, e.g., Landergren et al., Science 241: 1077, 1988 which discloses a ligation technique for detecting single gene defects, including point mutations). Such techniques should be capable of clearly distinguishing single nucleotide differences (point mutations) that can result in disease (e.g., sickle cell anemia) as well as deleted or duplicated genetic sequences (e.g., thalassemia).

The methods referred to above are relatively complex procedures that, as noted, suffer from drawbacks making them difficult to use in the clinical diagnostic laboratory for routine diagnosis and epidemiological studies of infectious diseases and genetic abnormalities. All of the methods described involve amplification of the target nucleic acid to be detected. The extensive time and labor required for target nucleic acid preparation, as well as variability in amplification templates (e.g., the specific target nucleic acid whose detection is being measured) and conditions, render such procedures unsuitable for standardization and automation required in a clinical laboratory setting.

The present invention is directed to the development of rapid, sensitive assays useful for the detection and monitoring of pathogenic organisms, as well as the detection of abnormal genes in an individual. Moreover, the methodology of the present invention can be readily standardized and automated for use in the clinical laboratory setting.

#### 25 Summary of the Invention

An improved method, which allows for rapid, sensitive and standardized detection and quantitation of nucleic acids from pathogenic microorganisms from samples from patients with infectious diseases has now been developed. The

improved methodology also allows for rapid and sensitive detection and quantitation of genetic variations in nucleic acids in samples from patients with genetic diseases or neoplasia.

This method provides several advantages over prior art methods. The method simplifies the target nucleic acid isolation procedure, which can be performed in microtubes, microchips or micro-well plates, if desired. The method allows for isolation, amplification and detection of nucleic acid sequences corresponding to the target nucleic acid of interest to be carried out in the same sample receptacle, *e.g.*, tube or micro-well plate. The method also allows for standardization of conditions, because only a pair of generic amplification probes may be utilized in the present method for detecting a variety of target nucleic acids, thus allowing efficient multiplex amplification. The method also allows the direct detection of RNA by probe amplification without the need for DNA template production. The amplification probes, which in the method may be covalently joined end to end, form a contiguous ligated amplification sequence. The assembly of the amplifiable DNA by ligation increases specificity, and makes possible the detection of a single mutation in a target. This ligated amplification sequence, rather than the target nucleic acid, is either directly detected or amplified, allowing for substantially the same amplification conditions to be used for a variety of different infectious agents and, thus, leading to more controlled and consistent results being obtained. In addition, multiple infectious agents in a single sample may be detected using the multiplex amplification methodology disclosed.

Additional advantages of the present invention include the ability to automate the protocol of the method disclosed, which is important in performing routine assays, especially in the clinical laboratory and the ability of the method to utilize various nucleic acid amplification systems, *e.g.*, polymerase chain reaction (PCR), strand displacement amplification (SDA), ligase chain reaction (LCR) and self-sustained sequence replication (3SR).

The present method incorporates magnetic separation techniques using paramagnetic particles or beads coated with a ligand binding moiety that recognizes and binds to a ligand on an oligonucleotide capture probe to isolate a target nucleic acid (DNA or RNA) from a sample of a clinical specimen containing  
5 e.g., a suspected pathogenic microorganism or gene abnormality, in order to facilitate detection of the underlying disease-causing agent.

In one aspect of the present invention, a target nucleic acid is hybridized to a pair of non-overlapping oligonucleotide amplification probes in the presence of paramagnetic beads coated with a ligand binding moiety, e.g., streptavidin, to form  
10 a complex. These probes are referred to as a capture/amplification probe and an amplification probe, respectively. The capture/amplification probe contains a ligand, e.g., biotin, that is recognized by and binds to the ligand binding moiety on the paramagnetic beads. The probes are designed so that each contains generic sequences (i.e., not target nucleic acid specific) and specific sequences  
15 complementary to a nucleotide sequence in the target nucleic acid. The specific sequences of the probes are complementary to adjacent regions of the target nucleic acid, and thus do not overlap one another. Subsequently, the two probes are joined together using a ligating agent to form a contiguous ligated amplification sequence. The ligating agent may be an enzyme, e.g., DNA ligase or  
20 a chemical. Following washing and removal of unbound reactants and other materials in the sample, the detection of the target nucleic acid in the original sample is determined by detection of the ligated amplification sequence. The ligated amplification sequence may be directly detected if a sufficient amount (e.g.,  $10^6$  -  $10^7$  molecules) of target nucleic acid was present in the original sample. If an  
25 insufficient amount of target nucleic acid ( $< 10^6$  molecule) was present in the sample, the ligated amplification sequence (not the target nucleic acid) may be amplified using suitable amplification techniques, e.g. PCR, for detection. Alternatively, capture and amplification functions may be performed by separate



and independent probes. For example, two amplification probes may be ligated to form a contiguous sequence to be amplified. Unligated probes, as well as the target nucleic acid, are not amplified in this technique. Yet another alternative is a single amplification probe that hybridizes to the target such that its 3' and 5' ends are juxtaposed. The ends are then ligated by DNA ligase to form a covalently linked circular probe that can be identified by amplification.

#### Brief Description of The Drawings

Fig. 1 is a generic schematic diagram showing the various components used in the present method of capture, ligation-dependent amplification and detection of a target nucleic acid.

Fig. 2 is a schematic flow diagram generally showing the various steps in the present method.

Fig. 3 is an autoradiograph depicting the detection of a PCR amplified probe that detects HIV-1 RNA. Lane A is the ligated amplification sequence according to the invention; Lane B, which is a control, is PCR amplified nanovariant DNA, that does not contain any HIV-1-specific sequences.

Fig. 4 is a schematic diagram of an embodiment of the present invention showing the various components used for capture and ligation-dependent detection of a target nucleic acid, e.g. HCV RNA, and subsequent amplification of its sequences, employing two capture/amplification probes containing a bound biotin moiety and two ligation-dependent amplification probes.

Fig. 5 is a schematic flow diagram showing magnetic isolation, target specific ligation and PCR amplification for the detection of HCV RNA using a single capture/amplification probe and two amplification probes.

Fig. 6 is a schematic diagram showing the various components used to amplify and detect a target nucleic acid e.g. HCV RNA, employing two

capture/amplification probes, each containing a bound biotin moiety, and a single amplification probe.

Fig. 7 is a schematic diagram showing various components used to detect a target nucleic acid e.g. HCV RNA, employing two capture/amplification probes, each containing a bound biotin moiety, and a single amplification probe that  
5 circularizes upon hybridization to the target nucleic acid and ligation of free termini.

Fig. 8 is a photograph of ethidium bromide stained DNA depicting PCR amplified probes used to detect HCV RNA in a sample. The amount of HCV RNA  
10 in the sample is determined by comparing sample band densities to those of standard serial dilutions of HCV transcripts.

Fig. 9 is a photograph of ethidium bromide stained DNA depicting PCR amplified single, full length ligation-dependent and circularizable probes used to detect HCV RNA in a sample. The amount of HCV RNA in the sample is  
15 determined by comparing sample band densities to those of standard serial dilutions of HCV transcripts.

Fig. 10 is a schematic diagram illustrating the capture and detection of a target nucleic acid by the hybridization signal amplification method (HSAM).

Fig. 11 is a schematic diagram illustrating the use of HSAM to detect an  
20 antigen with a biotinylated antibody and biotinylated signal probes.

Figs. 12A and B are schematic diagrams illustrating RNA-protein crosslinks formed during formalin fixation. Fig. 12A depicts the prevention of primer extension due to the crosslinks in the method of reverse transcription PCR (RT-PCR). Fig. 13B illustrates that hybridization and ligation of the probes of the  
25 present invention are not prevented by protein-RNA crosslinks.

Fig. 13 is a schematic diagram of multiplex PCR. Two set of capture/amplification probes, having specificity for HIV-1 and HCV, respectively, are used for target capture, but only one pair of generic PCR primers is used to

amplify the ligated probes. The presence of each target can be determined by the size of the amplified product or by enzyme-linked immunosorbent assay.

Fig. 14 is a schematic diagram of HSAM using a circular target probe and three circular signal probes. AB, CD and EF indicate nucleotide sequences in the linker regions that are complementary to the 3' and 5' nucleotide sequences of a circular signal probe. AB', CD' and EF' indicate the 3' and 5' nucleotide sequences of the signal probes that have been juxtaposed by binding to the complementary sequences of the linker regions of another circular signal probe.

Fig. 15 is a schematic diagram of HSAM utilizing a circular target probe and linear signal probes.

Fig. 16 is a schematic diagram of amplification of a circularized probe by primer-extension/displacement and PCR.

Fig. 17 is a schematic diagram of an embodiment of RAM in which a T3 promoter has been incorporated into Ext-primer 2, allowing amplification of the circular probe by transcription.

Fig. 18 provides a polyacrylamide gel depicting the amplification of a circular probe by extension of Ext-primer 1.

Fig. 19 is a schematic diagram of amplification of a circularized probe by the ramification-extension amplification method (RAM).

Fig. 20 is a diagram of a RAM assay in which an RNA polymerase promoter sequence is incorporated into the primer.

#### Detailed Description of The Invention

The present invention is directed towards simplified sample preparation and generic amplification systems for use in clinical assays to detect and monitor pathogenic microorganisms in a test sample, as well as to detect abnormal genes in an individual. Generic amplification systems are described for clinical use that combine magnetic separation techniques with ligation/amplification techniques for

detecting and measuring nucleic acids in a sample. The separation techniques may be combined with most amplification systems, including *inter alia*, PCR, LCR and SDA amplification techniques. The present invention further provides alternative amplification systems referred to as ramification-extension amplification method (RAM) and hybridization signal amplification (HSAM) that are useful in the method of the present invention. The advantages of the present invention include (1) suitability for clinical laboratory settings, (2) ability to obtain controlled and consistent (standardizable) results, (3) ability to quantitate nucleic acids in a particular sample, (4) ability to simultaneously detect and quantitate multiple target nucleic acids in a test sample, (5) ability to sensitively and efficiently detect nucleic acids in serum samples and *in situ*, and (6) ability to detect a single mutation in a target. Moreover, the complete protocol of the presently disclosed method may be easily automated, making it useful for routine diagnostic testing in a clinical laboratory setting. With the use of RAM and HSAM, an isothermal amplification can be achieved.

The present invention incorporates magnetic separation, utilizing paramagnetic particles, beads or spheres that have been coated with a ligand binding moiety that recognizes and binds to ligand present on an oligonucleotide capture probe, described below, to isolate a target nucleic acid (DNA or RNA) from a clinical sample in order to facilitate its detection.

Magnetic separation is a system that uses paramagnetic particles or beads coated with a ligand binding moiety to isolate a target nucleic acid (RNA or DNA) (Lomeli *et al.* Clin. Chem. 35:1826, 1989) from a sample. The principle underscoring this method is one of hybrid formation between a capture probe containing a ligand, and a target nucleic acid through the specific complementary sequence between the probe and target. Hybridization is carried out in the presence of a suitable chaotropic agent, *e.g.*, guanidine thiocyanate (GnSCN) which facilitates the specific binding of the probe to complementary sequences in

the target nucleic acid. The hybrid so formed is then captured on the paramagnetic bead through specific binding of the ligand on the capture probe to the ligand binding moiety on the bead.

The term "ligand" as used herein refers to any component that has an  
5 affinity for another component termed here as "ligand binding moiety." The  
binding of the ligand to the ligand binding moiety forms an affinity pair between  
the two components. For example, such affinity pairs include, *inter alia*, biotin  
with avidin/streptavidin, antigens or haptens with antibodies, heavy metal  
derivatives with thiogroups, various polynucleotides such as homopolynucleotides  
10 as poly dG with poly dC, poly dA with poly dT and poly dA with poly U. Any  
component pairs with strong affinity for each other can be used as the affinity pair,  
ligand-ligand binding moiety. Suitable affinity pairs are also found among ligands  
and conjugates used in immunological methods. The preferred ligand-ligand  
binding moiety for use in the present invention is the biotin/streptavidin affinity  
15 pair.

In one aspect, the present invention provides for the capture and detection  
of a target nucleic acid as depicted in Fig. 1, which provides a schematic depiction  
of the capture and detection of a target nucleic acid. In the presence of  
paramagnetic beads or particles (a) coated with a ligand binding moiety (b), the  
20 target nucleic acid is hybridized simultaneously to a pair of oligonucleotide  
amplification probes, *i.e.*, a first nucleotide probe (also referred to as a  
capture/amplification probe) and a second nucleotide probe (also referred to as an  
amplification probe), designated in Fig. 1 as Capture/Amp-probe-1 (d and e) and  
Amp-probe-2 (f and g), respectively. The probes may be either  
25 oligodeoxyribonucleotide or oligoribonucleotide molecules, with the choice of  
molecule type depending on the subsequent amplification method. Reference to  
"probe" herein generally refers to multiple copies of a probe.

The capture/amplification probe is designed to have a generic 3' nucleotide sequence (d), i.e., it is not specific for the specific target nucleic acid being analyzed and thus can be used with a variety of target nucleic acids. In other words, the 3' sequence of the first probe is not complementary, nor hybridizable, to the nucleotide sequence of the target nucleic acid. The 5' portion (e) of the capture/amplification probe comprises a nucleotide sequence that is complementary and hybridizable to a portion of the nucleotide sequence of the specific target nucleic acid. Preferably, for use with pathogenic microorganisms and viruses, the capture/amplification probe is synthesized so that its 3' generic sequence (d) is the same for all systems, with the 5' specific sequence (e) being specifically complementary to a target nucleic acid of an individual species or subspecies of organism or an abnormal gene, e.g., the gene(s) responsible for cystic fibrosis or sickle cell anemia. In certain instances, it may be desirable that the 5' specific portion of the capture/amplification probe be specifically complementary to the nucleotide sequence of a target nucleic acid of a particular strain of organism. Capture/Amp-probe-1 further contains a ligand (c) at the 3' end of the probe (d), which is recognized by and binds to the ligand binding moiety (b) coated onto the paramagnetic beads (a).

The second or amplification probe, i.e., Amp-probe-2 in Fig. 1, contains a 3' sequence (f) that is complementary and hybridizes to a portion of the nucleotide sequence of a target nucleic acid immediately adjacent to (but not overlapping) the sequence of the target that hybridizes to the 5' end of Capture/Amp-probe-1. Amp-probe-2 also contains a 5' generic sequence (g) which is neither complementary nor hybridizable to the target nucleic acid, to which may be optionally attached at the 5' end thereof a label or signal generating moiety (\*\*\*) . Such signal generating moieties include, inter alia, radioisotopes, e.g.,  $^{32}\text{P}$  or  $^3\text{H}$ , fluorescent molecules, e.g., fluorescein and chromogenic molecules or enzymes, e.g., peroxidase. Such labels are used for direct detection of the target nucleic acid and detects the

presence of Amp-probe-2 bound to the target nucleic acid during the detection step.  $^{32}\text{P}$  is preferred for detection analysis by radioisotope counting or autoradiography of electrophoretic gels. Chromogenic agents are preferred for detection analysis, *e.g.*, by an enzyme linked chromogenic assay.

5           As a result of the affinity of the ligand binding moiety on the paramagnetic beads for the ligand on the capture/amplification probe, target nucleic acid hybridized to the specific 5' portion of the probe is captured by the paramagnetic beads. In addition, Amp-probe-2, which has also hybridized to the target nucleic acid is also captured by the paramagnetic beads.

10           After capture of the target nucleic acid and the two hybridized probes on the paramagnetic beads, the probes are ligated together (at the site depicted by the vertical arrow in Fig. 1) using a ligating agent to form a contiguous single-stranded oligonucleotide molecule, referred to herein as a ligated amplification sequence. The ligating agent may be an enzyme, *e.g.*, a DNA or RNA ligase, or a chemical joining agent, *e.g.*, cyanogen bromide or a carbodiimide (Sokolova *et al.*, FEBS Lett. 232:153-155, 1988). The ligated amplification sequence is hybridized to the target nucleic acid (either an RNA or DNA) at the region of the ligated amplification sequence that is complementary to the target nucleic acid (*e.g.*, (e) and (f) in Fig. 1).

20           If a sufficient amount of target nucleic acid (*e.g.*,  $10^6$  -  $10^7$  molecules) is present in the sample, detection of the target nucleic acid can be achieved without any further amplification of the ligated amplification sequence, *e.g.*, by detecting the presence of the optional signal generating moiety of at the 5' end of Amp-probe-2.

25           If there is insufficient target nucleic acid (*e.g.*,  $<10^6$  molecules) in the sample for direct detection, as above, the ligated amplification sequence formed as described above by the ligation of Capture/Amp-probe-1 and Amp-probe-2 may be amplified for detection as described below.

Alternately, the ligated amplification sequence can be detected without nucleic acid amplification of the ligated sequence by the use of a hybridization signal amplification method (HSAM). HSAM is illustrated in Fig. 10. For HSAM, the target specific nucleic acid probe (e.g. Amp-probe-2) is internally  
5 labeled with a ligand. The ligand is a molecule that can be bound to the nucleic acid probe, and can provide a binding partner for a ligand binding molecule that is at least divalent. In a preferred embodiment the ligand is biotin or an antigen, for example digoxigenin. The nucleic acid probe can be labeled with the ligand by methods known in the art. In a preferred embodiment, the probe is labeled with  
10 from about 3 to about 10 molecules of ligand, preferably biotin or digoxigenin. After the capture probe and ligand-labeled target specific probe are added to the sample and the resulting complex is washed as described hereinabove, the ligating agent is added to ligate the probes as described above. The ligation of the target specific probe to the capture probe results in retention of the target specific probe  
15 on the beads. Concurrently or subsequently, an excess of ligand binding moiety is added to the reaction. The ligand binding moiety is a moiety that binds to and forms an affinity pair with the ligand. The ligand binding moiety is at least divalent for the ligand. In a preferred embodiment, the ligand is biotin and the ligand binding moiety is streptavidin. In another preferred embodiment the ligand  
20 is an antigen and the ligand binding molecule is an antibody to the antigen. Addition of ligating agent and ligand binding molecule results in a complex comprising the target specific probe covalently linked to the capture probe, with the ligand-labeled target specific probe having ligand binding molecules bound to the ligand.

25 A signal probe is then added to the reaction mixture. The signal probe is a generic nucleic acid that is internally labeled with a ligand that binds to the ligand binding molecule. In a preferred embodiment, the ligand is the same ligand that is used to label the target specific amplification probe. The signal probe has a generic



sequence such that it is not complementary or hybridizable to the target nucleic acid or the other probes. In a preferred embodiment, the signal probe contains from about 30 to about 100 nucleotides and contains from about 3 to about 10 molecules of ligand.

5           Addition of the signal probe to the complex in the presence of excess ligand binding molecule results in the formation of a large and easily detectable complex. The size of the complex results from the multiple valency of the ligand binding molecule. For example, when the ligand in the target specific amplification probe is biotin, one molecule of streptavidin binds per molecule of biotin in the probe.

10          The bound streptavidin is capable of binding to three additional molecules of biotin. When the signal probe is added, the biotin molecules on the signal probe bind to the available binding sites of the streptavidin bound to the amplification probe. A web-like complex is formed as depicted schematically in Fig. 10.

            Following washing as described hereinabove to remove unbound signal

15          probe and ligand binding molecules, the complex is then detected. Detection of the complex is indicative of the presence of the target nucleic acid. The HSAM method thus allows detection of the target nucleic acid in the absence of nucleic acid amplification.

            The complex can be detected by methods known in the art and suitable for

20          the selected ligand and ligand binding moiety. For example, when the ligand binding moiety is streptavidin, it can be detected by immunoassay with streptavidin antibodies. Alternately, the ligand binding molecule may be utilized in the present method as a conjugate that is easily detectable. For example, the ligand may be conjugated with a fluorochrome or with an enzyme that is detectable

25          by an enzyme-linked chromogenic assay, such as alkaline phosphatase or horseradish peroxidase. For example, the ligand binding molecule may be alkaline phosphatase-conjugated streptavidin, which may be detected by addition of a chromogenic alkaline phosphatase substrate, e.g. nitroblue tetrazolium chloride.

The HSAM method may also be used with the circularizable amplification probes described hereinbelow. The circularizable amplification probes contain a 3' and a 5' region that are complementary and hybridizable to adjacent but not contiguous sequences in the target nucleic acid, and a linker region that is not complementary nor hybridizable to the target nucleic acid. Upon binding of the circularizable probe to the target nucleic acid, the 3' and 5' regions are juxtaposed. Linkage of the 3' and 5' regions by addition of a linking agent results in the formation of a closed circular molecule bound to the target nucleic acid. The target/probe complex is then washed extensively to remove unbound probes.

For HSAM, ligand molecules are incorporated into the linker region of the circularizable probe, for example during probe synthesis. The HSAM assay is then performed as described hereinabove and depicted in Fig. 15 by adding ligand binding molecules and signal probes to form a large complex, washing, and then detecting the complex. Nucleic acid detection methods are known to those of ordinary skill in the art and include, for example, latex agglutination as described by Essers, et al. (1980), J. Clin. Microbiol. 12:641. The use of circularizable probes in conjunction with HSAM is particularly useful for *in situ* hybridization.

HSAM is also useful for detection of an antibody or antigen. A ligand-containing antigen or antibody is used to bind to a corresponding antibody or antigen, respectively. After washing, excess ligand binding molecule is then added with ligand-labeled generic nucleic acid probe. A large complex is generated and can be detected as described hereinabove. In a preferred embodiment, the ligand is biotin and the ligand binding molecule is streptavidin. The use of HSAM to detect an antigen utilizing a biotinylated antibody and biotinylated signal probe is depicted in Fig. 11.

The present methods may be used with routine clinical samples obtained for testing purposes by a clinical diagnostic laboratory. Clinical samples that may be used in the present methods include, *inter alia*, whole blood, separated white

blood cells, sputum, urine, tissue biopsies, throat swabbings and the like, i.e., any patient sample normally sent to a clinical laboratory for analysis.

The present ligation-dependent amplification methods are particularly useful for detection of target sequences in formalin fixed, paraffin embedded (FFPE) specimens, and overcomes deficiencies of the prior art method of reverse transcription polymerase chain reaction (RT-PCR) for detection of target RNA sequences in FFPE specimens. RT-PCR has a variable detection sensitivity, presumably because the formation of RNA-RNA and RNA-protein crosslinks during formalin fixation prevents reverse transcriptase from extending the primers. In the present methods the probes can hybridize to the targets despite the crosslinks, reverse transcription is not required, and the probe, rather than the target sequence, is amplified. Thus the sensitivity of the present methods is not compromised by the presence of crosslinks. The advantages of the present methods relative to RT-PCR are depicted schematically in Fig. 12.

With reference to Fig. 2, which provides a general diagrammatic description of the magnetic separation and target-dependent detection of a target nucleic acid in a sample, this aspect of the present method involves the following steps:

(a) The first step is the capture or isolation of a target nucleic acid present in the sample being analyzed, e.g., serum. A suitable sample size for analysis that lends itself well to being performed in a micro-well plate is about 100 $\mu$ l. The use of micro-well plates for analysis of samples by the present method facilitates automation of the method. The sample, containing a suspected pathogenic microorganism or virus or abnormal gene, is incubated with an equal volume of lysis buffer, containing a chaotropic agent (i.e., an agent that disrupts hydrogen bonds in a compound), a stabilizer and a detergent, which provides for the release of any nucleic acids and proteins that are present in the sample. For example, a suitable lysis buffer for use in the present method comprises 2.5 - 5M

guanidine thiocyanate (GnSCN), 10% dextran sulfate, 100mM EDTA, 200mM Tris-HCl(pH 8.0) and 0.5% NP-40 (Nonidet P-40, a nonionic detergent, N-lauroylsarcosine, Sigma Chemical Co., St. Louis, MO). The concentration of GnSCN, which is a chaotropic agent, in the buffer also has the effect of denaturing  
5 proteins and other molecules involved in pathogenicity of the microorganism or virus. This aids in preventing the possibility of any accidental infection that may occur during subsequent manipulations of samples containing pathogens.

Paramagnetic particles or beads coated with the ligand binding moiety are added to the sample, either simultaneous with or prior to treatment with the lysis  
10 buffer. The paramagnetic beads or particles used in the present method comprise ferricoxide particles (generally < 1 um in diameter) that possess highly convoluted surfaces coated with silicon hydrides. The ligand binding moiety is covalently linked to the silicon hydrides. The paramagnetic particles or beads are not magnetic themselves and do not aggregate together. However, when placed in a  
15 magnetic field, they are attracted to the magnetic source. Accordingly, the paramagnetic particles or beads, together with anything bound to them, may be separated from other components of a mixture by placing the reaction vessel in the presence of a strong magnetic field provided by a magnetic separation device. Such devices are commercially available, e.g., from Promega Corporation or  
20 Stratagene, Inc.

Suitable paramagnetic beads for use in the present method are those coated with streptavidin, which binds to biotin. Such beads are commercially available from several sources, e.g., Streptavidin MagneSphere® paramagnetic particles obtainable from Promega Corporation and Streptavidin-Magnetic Beads (catalog  
25 #MB002) obtainable from American Qualex, La Mirada, CA.

Subsequently, a pair of oligonucleotide amplification probes, as described above, is added to the lysed sample and paramagnetic beads. In a variation, the probes and paramagnetic beads may be added at the same time. As described

above, the two oligonucleotide probes are a first probe or capture/amplification probe (designated Capture/Amp-probe-1 in Fig. 1) containing a ligand at its 3' end and a second probe or amplification probe (designated Amp-probe-2 in Fig. 1). For use with streptavidin-coated paramagnetic beads, the first probe is preferably a  
5 3'-biotinylated capture/amplification probe.

The probes may be synthesized from nucleoside triphosphates by known automated oligonucleotide synthetic techniques, e.g., via standard phosphoramidite technology utilizing a nucleic acid synthesizer. Such synthesizers are available, e.g., from Applied Biosystems, Inc. (Foster City, CA).

10 Each of the oligonucleotide probes are about 40-200 nucleotides in length, preferably about 50-100 nucleotides in length, which, after ligation of the probes, provides a ligated amplification sequence of about 80-400, preferably 100-200, nucleotides in length, which is suitable for amplification via PCR, Q $\beta$  replicase or SDA reactions.

15 The target nucleic acid specific portions of the probes, i.e., the 5' end of the first capture/amplification probe and the 3' end of the second amplification probe complementary to the nucleotide sequence of the target nucleic acid, are each approximately 15-60 nucleotides in length, preferably about 18-35 nucleotides, which provides a sufficient length for adequate hybridization of the probes to the  
20 target nucleic acid.

With regard to the generic portions of the probes, i.e., the 3' end of the capture/amplification probe and the 5' end of the amplification probe, which are not complementary to the target nucleic acid, the following considerations, inter alia, apply:

25 (1) The generic nucleotide sequence of an oligodeoxynucleotide capture/amplification probe comprises at least one and, preferably two to four, restriction endonuclease recognition sequences(s) of about six nucleotides in length, which can be utilized, if desired, to cleave the ligated amplification

sequence from the paramagnetic beads by specific restriction endonucleases, as discussed below. Preferred restriction sites include, *inter alia*, *EcoRI* (GAATTC), *SmaI* (CCCGGG) and *HindIII* (AAGCTT).

(2) The generic nucleotide sequence comprises a G-C rich region  
5 which, upon hybridization to a primer, as discussed below, provides a more stable duplex molecule, *e.g.*, one which requires a higher temperature to denature. Ligated amplification sequences having G-C rich generic portions of the capture/amplification and amplification probes may be amplified using a two temperature PCR reaction, wherein primer hybridization and extension may both  
10 be carried out at a temperature of about 60-65 °C (as opposed to hybridizing at 37 °C, normally used for PCR amplification) and denaturation at a temperature of about 92 °C, as discussed below. The use of a two temperature reaction reduces the length of each PCR amplification cycle and results in a shorter assay time.

Following incubation of the probes, magnetic beads and target nucleic acid  
15 in the lysis buffer for about 30-60 minutes, at a temperature of about 37 °C, a ternary complex comprising the target nucleic acid and hybridized probes is formed, which is bound to the paramagnetic beads through the binding of the ligand (*e.g.*, biotin) on the capture/amplification probe to the ligand binding moiety (*e.g.*, streptavidin) on the paramagnetic beads. The method is carried out as  
20 follows:

(a) The complex comprising target nucleic acid-probes-beads is then separated from the lysis buffer by means of a magnetic field generated by a magnetic device, which attracts the beads. The magnetic field is used to hold the complex to the walls of the reaction vessel, *e.g.*, a micro-well plate or a microtube,  
25 thereby allowing for the lysis buffer and any unbound reactants to be removed, *e.g.*, by decanting, without any appreciable loss of target nucleic acid or hybridized probes. The complex is then washed 2-3 times in the presence of the magnetic field with a buffer that contains a chaotropic agent and detergent in amounts that

will not dissociate the complex. A suitable washing buffer for use in the present method comprises about 1.0 - 1.5M GnSCN, 10mM EDTA, 100mM Tris-HCl (pH 8.0) and 0.5% NP-40 (Nonidet P-40, nonionic detergent, Sigma Chemical Co., St. Louis, MO). Other nonionic detergents, e.g., Triton X-100, may also be used. The buffer wash removes unbound proteins, nucleic acids and probes that may interfere with subsequent steps. The washed complex may be then washed with a solution of KCl to remove the GnSCN and detergent and to preserve the complex. A suitable concentration of KCl is about 100 to 500mM KCl. Alternatively, the KCl wash step may be omitted in favor of two washes with ligase buffer.

(b) If the probes are to be ligated together, the next step in the present method involves treating the complex from step (a) with a ligating agent that will join the two probes. The ligating agent may be an enzyme, e.g., DNA or RNA ligase, or a chemical agent, e.g., cyanogen bromide or a carbodiimide. This serves to join the 5' end of the first oligonucleotide probe to the 3' end of the second oligonucleotide probe (capture/amplification probe and amplification probe, respectively) to form a contiguous functional single-stranded oligonucleotide molecule, referred to herein as a ligated amplification sequence. The presence of the ligated amplification sequence detected, (via the signal generating moiety at the 5'-end of Amp-probe-2), indirectly indicates the presence of target nucleic acid in the sample. Alternatively, the ligated amplification sequence serves as the template for any of various amplification systems, such as PCR or SDA. Any of the first and second probes which remain unligated after treatment are not amplified in subsequent steps in the method.

Capture/amplification and amplification oligodeoxynucleotide probes may be ligated using a suitable ligating agent, such as a DNA or RNA ligase.

Alternatively, the ligating agent may be a chemical, such as cyanogen bromide or a carbodiimide (Sokolova et al., FEBS Lett. 232:153-155, 1988). Preferred DNA ligases include T<sub>4</sub> DNA ligase and the thermostable *Taq* DNA ligase, with the

latter being most preferable, for probes being subjected to amplification using PCR techniques. The advantage of using the *Taq* DNA ligase is that it is active at elevated temperatures (65-72°C). Joining the oligonucleotide probes at such elevated temperatures decreases non-specific ligation. Preferably, the ligation step  
5 is carried out for 30-60 minutes at an elevated temperature (about 65-72°C), after which time any unligated second amplification probe (Amp-probe-2 in Fig. 1) may be, optionally, removed under denaturing conditions.

Denaturation is performed after the ligation step by adding TE Buffer (10mM Tris-HCl pH 7.5, 0.1mM EDTA) to the mixture. The temperature of the  
10 mixture is then raised to about 92-95°C for about 1-5 minutes to denature the hybridized nucleic acid. This treatment separates the target nucleic acid (and unligated Amp-probe-2) from the hybridized ligated amplification sequences, which remains bound to the paramagnetic beads. In the presence of a magnetic field, as above, the bound ligated amplification sequence is washed with TE Buffer  
15 at elevated temperature to remove denatured target nucleic acid and any unligated Amp-probe-2 and resuspended in TE Buffer for further analysis.

(c) The third step in the process is detection of the ligated amplification sequence, which indicates the presence of the target nucleic acid in the original test sample. This may be performed directly if sufficient target nucleic  
20 acid (about  $10^6$  -  $10^7$  molecules) is present in the sample or following amplification of the ligated amplification sequence, using one of the various amplification techniques, e.g., PCR or SDA. For example, direct detection may be used to detect HIV-1 RNA in a serum sample from an acutely infected AIDS patient. Such a serum sample is believed to contain about  $10^6$  copies of the viral RNA/ml.

25 For direct detection, an oligonucleotide detection probe of approximately 10-15 nucleotides in length, prepared by automative synthesis as described above to be complementary to the 5' end of the Amp-probe-2 portion of the ligated amplification sequence, may be added to the ligated amplification sequence



attached to the paramagnetic beads. The detection probe, which is labelled with a signal generating moiety, e.g., a radioisotope, a chromogenic agent or a fluorescent agent, is incubated with the complex for a period of time and under conditions sufficient to allow the detection probe to hybridize to the ligated amplification sequence. The incubation time can range from about 1-60 minutes and may be carried out at a temperature of about 4-60°C. Preferably, when the label is a fluorogenic agent, the incubation temperature is about 4°C; a chromogenic agent, about 37°C; and a radioisotope, about 37° - 60°C. Preferred signal generating moieties include, inter alia, <sup>32</sup>P (radioisotope), peroxidase (chromogenic) and fluorescein, acridine or ethidium (fluorescent).

Alternatively, for direct detection, as discussed above, the Amp-probe-2 itself may be optionally labeled at its 5' end with a signal generating moiety, e.g., <sup>32</sup>P. The signal generating moiety will then be incorporated into the ligated amplification sequence following ligation of the Capture/Amp-probe-1 and Amp-probe-2. Thus, direct detection of the ligated amplification sequence, to indicate the presence of the target nucleic acid, can be carried out immediately following ligation and washing.

Any suitable technique for detecting the signal generating moiety directly on the ligated amplification probe or hybridized thereto via the detection primer may be utilized. Such techniques include scintillation counting (for <sup>32</sup>P) and chromogenic or fluorogenic detection methods as known in the art. For example, suitable detection methods may be found, inter alia, in Sambrook et al., Molecular Cloning - A Laboratory Manual, 2d Edit., Cold Spring Harbor Laboratory, 1989, in Methods in Enzymology, Volume 152, Academic Press (1987) or Wu et al., Recombinant DNA Methodology, Academic Press (1989).

If an insufficient amount of target nucleic acid is present in the original sample (<10<sup>6</sup> molecules), an amplification system is used to amplify the ligated amplification sequence for detection.

For example, if the probes used in the present method are oligodeoxyribonucleotide molecules, PCR methodology can be employed to amplify the ligated amplification sequence, using known techniques (see, e.g., PCR Technology, H.A. Erlich, ed., Stockton Press, 1989, Sambrook et al., Molecular Cloning - A Laboratory Manual, 2d Edit., Cold Spring Harbor Laboratory, 1989. 5 When using PCR for amplification, two primers are employed, the first of the primers being complementary to the generic 3' end of Capture/Amp-probe-1 region of the ligated amplification sequence and the second primer corresponding in sequence to the generic 5' end of Amp-probe-2 portion of the ligated amplification 10 sequence. These primers, like the sequences of the probes to which they bind, are designed to be generic and may be used in all assays, irrespective of the sequence of the target nucleic acid. Because the first primer is designed to anneal to the generic sequence at the 3' end of the ligated amplification sequence and the second primer corresponds in sequence to the generic sequence at the 5' end of the ligated 15 amplification sequence, generic primers may be utilized to amplify any ligated amplification sequence.

A generic pair of PCR oligonucleotide primers for use in the present method may be synthesized from nucleoside triphosphates by known automated synthetic techniques, as discussed above for synthesis of the oligonucleotide 20 probes. The primers may be 10-60 nucleotides in length. Preferably the oligonucleotide primers are about 18-35 nucleotides in length, with lengths of 16-21 nucleotides being most preferred. The pair of primers are designated to be complementary to the generic portions of the first capture/amplification probe and second amplification probe, respectively and thus have high G-C content. It is also 25 preferred that the primers are designed so that they do not have any secondary structure, i.e., each primer contains no complementary region within itself that could lead to self annealing.

The high G-C content of the generic PCR primers and the generic portions of the ligated amplification sequence permits performing the PCR reaction at two temperatures, rather than the usual three temperature method. Generally, in the three temperature method, each cycle of amplification is carried out as follows:

5           Annealing of the primers to the ligated amplification sequence is carried out at about 37-50°C; extension of the primer sequence by *Taq* polymerase in the presence of nucleoside triphosphates is carried out at about 70-75°C; and the denaturing step to release the extended primer is carried out at about 90-95°C. In the two temperature PCR technique, the annealing and extension steps may both be  
10       carried at about 60-65°C, thus reducing the length of each amplification cycle and resulting in a shorter assay time.

For example, a suitable three temperature PCR amplification (as provided in Saiki *et al.*, *Science* 239:487-491, 1988) may be carried out as follows:

15           Polymerase chain reactions (PCR) are carried out in about 25-50 µl samples containing 0.01 to 1.0 ng of template ligated amplification sequence, 10 to 100 pmol of each generic primer, 1.5 units of *Taq* DNA polymerase (Promega Corp.), 0.2mM dATP, 0.2mM dCTP, 0.2mM dGTP, 0.2mM dTTP, 15mM MgCl<sub>2</sub>, 10mM Tris-HCl (pH 9.0), 50mM KCl, 1 µg/ml gelatin, and 10 µl/ml Triton X-100 (Saiki, 1988). Reactions are incubated at 94°C for 1 minute, about 37 to 55°C for  
20       2 minutes (depending on the identity of the primers), and about 72°C for 3 minutes and repeated for 30-40, preferably 35, cycles. A 4 µl-aliquot of each reaction is analyzed by electrophoresis through a 2% agarose gel and the DNA products in the sample are visualized by staining the gel with ethidium-bromide.

25           The two temperature PCR technique, as discussed above, differs from the above only in carrying out the annealing/extension steps at a single temperature, *e.g.*, about 60-65°C for about 5 minutes, rather than at two temperatures.

Also, with reference to Fig. 2, quantitative detection of the target nucleic acid using a competitive PCR assay may also be carried out. For such quantitative

detection, a oligodeoxyribonucleotide releasing primer, synthesized generally as described above, is added to the paramagnetic bead-bound ligated amplification sequence. The releasing primer, may or may not be but, preferably, will be the same as the first PCR primer discussed above. The releasing primer is designed to  
5 hybridize to the generic 3' end of the Capture/Amp-probe-1 portion of the ligated amplification sequence, which, as discussed above, comprises a nucleotide sequence recognized by at least one, and preferably two-four, restriction endonucleases to form at least one, and preferably two-four, double-stranded restriction enzyme cleavage site, e.g., a *EcoRI*, *SmaI* and/or *HindIII* site(s).

10 In this regard, as noted above, for use in a quantitative PCR amplification and detection system, it is important that the Capture/Amp-probe-1 be synthesized with at least one, and preferably two to four nucleotide sequences recognized by a restriction enzyme located at the 3' end of the probe. This provides the nucleotide sequences to which the releasing primer binds to form double-stranded restriction  
15 enzyme cleavage site(s).

After ligating the first and second probes to form the ligated amplification sequence, the releasing primer is hybridized to the ligated amplification sequence. At least one restriction enzyme, e.g., *EcoRI*, *SmaI* and/or *HindIII*, is then added to the hybridized primer and ligated amplification sequence. The ligated  
20 amplification sequence is released from the beads by cleavage at the restriction enzyme, e.g., *EcoRI* site.

Following its release from the beads, the ligated amplification sequence is serially diluted and then quantitatively amplified via the DNA *Taq* polymerase using a suitable PCR amplification technique, as described above.

25 Quantitation of the original target nucleic acid in the sample may be performed by a competitive PCR method to quantitatively amplify the ligated amplification sequence, as provided, e.g., in Sambrook et al., Molecular Cloning - A Laboratory Manual, 2d Edit., Cold Spring Harbor Laboratory, 1989.

In general, the method involves coamplification of two templates: the ligated amplification sequence and a control (e.g., the generic portions of the ligated amplification sequence or the generic portions that have interposed thereto a nucleotide sequence unrelated to the sequence of the target nucleic acid) added in known amounts to a series of amplification reactions. While the control and ligated amplification sequence are amplified by the same pair of generic PCR primers, the control template is distinguishable from the ligated amplification sequence, e.g., by being different in size. Because the control and ligated amplification sequence templates are present in the same amplification reaction and use the same primers, the effect of a number of variables which can effect the efficiency of the amplification reaction is essentially nullified. Such variables included, *inter alia*: (1) quality and concentration of reagents (*Taq* DNA polymerase, primers, templates, dNTP's), (2) conditions used for denaturation, annealing and primer extension, (3) rate of change of reaction temperature and (4) priming efficiency of the oligonucleotide primers. The relative amounts of the two amplified products -- i.e., ligated amplification sequence and control template -- reflect the relative concentrations of the starting templates.

The quantitative PCR method may be generally carried out as follows:

1. A control template, e.g., a DNA sequence corresponding to nanovariant RNA, a naturally occurring template of Q $\beta$  replicase (Schaffner *et al.*, J. Mol. Biol. 117:877-907, 1977) is synthesized by automated oligonucleotide synthesis and its concentration determined, e.g., by spectrophotometry or by ethidium-bromide mediated fluorescence.
2. A series of tenfold dilutions (in TE Buffer) containing from 10 ng/ml to 1 fg/ml of the control template is made and stored at -70°C until use.
3. A series of PCR amplification reactions of the free ligated amplification sequence is set up. In addition to the usual PCR ingredients, the

reactions also contain about 10 $\mu$ l/reaction of the tenfold dilutions of the control template and about 10  $\mu$ Ci/reaction of [ $\alpha$ -<sup>32</sup>P] dCTP(Sp.act. 3000 Ci/mmol).

4. PCR amplification reactions are carried out for a desired number of cycles, e.g., 30-40.

5. The reaction products may then be subject to agarose gel electrophoresis and autoradiography to separate the two amplified products (of different sizes). The amplified bands of the control and ligated amplification sequence are recovered from the gel using suitable techniques and radioactivity present in each band is determined by counting in a scintillation counter. The relative amounts of the two products are calculated based on the amount of radioactivity in each band. The amount of radioactivity in the two samples must be corrected for the differences in molecular weights of the two products.

6. The reactions may be repeated using a narrower range of concentration of control template to better estimate the concentration of ligated amplification sequence.

In another aspect of the invention, more than the two probes i.e. a single capture/amplification probe, and a single amplification probe may be utilized. For example one or more capture/amplification probes, and one or more amplification probes, may be employed in the detection and capture of the target nucleic acid, and optional amplification of the target sequences, as shown schematically in Figs. 4 and 5. According to this aspect of the present invention, the capture/amplification probes may have a 3' sequence complementary to the target nucleic acid and a biotin moiety at the 5' terminus that is capable of interacting with the streptavidin coated paramagnetic beads. Alternatively, the capture/amplification probes may have a 5' sequence complementary to the target nucleic acid and a biotin moiety at the 3' terminus.

Further, according to this aspect of the present invention, one or more amplification probes are utilized such that each probe contains sequences that are

specifically complementary to and hybridizable with the target nucleic acid. For example, the 5' end of one amplification probe, e.g. Amp-probe-2 (HCV A) in Fig. 4, contains a sequence complementary to a distinct portion in the target nucleic acid. The 3' end of the second amplification probe e.g. Amp-probe-2A (HCV A) in Fig. 4, contains a specific sequence complementary to a region of the target nucleic acid that is immediately adjacent to that portion of the target hybridizable to the first amplification probe. The capture/amplification probes and the pair of amplification probes hybridize with the target nucleic acid in the presence of GnSCN as described above. This complex so formed is bound to streptavidin-coated paramagnetic beads by means of a biotin moiety on the capture/amplification probes and the complex separated from unreacted components by means of magnetic separation as above. Next, the amplification probes may be linked, for example, by a ligase enzyme. This produces a ligated amplification sequence that serves as a template for *Taq* DNA polymerase during amplification reaction by PCR.

In a particular aspect of the invention, two or more capture/amplification probes and two pairs of amplification probes are utilized for the detection of the target nucleic acid.

The use of multiple capture/amplification probes affords even better capture efficiency, permitting the capture of multiple targets with generic capture probes. This is especially desirable for multiplex PCR reactions where multiple targets within a single reaction may be detected.

For example, a capture/amplification probe for use in the present method may be designed to bind to the poly-A tail region of cellular mRNA, whereby all such mRNA can be isolated by a single capture-and-wash step. Subsequent PCR amplification may be designed to detect and amplify specific target pathogen or disease gene sequences from such an mRNA pool. Such genes may include, inter

alia, the gene encoding the cystic fibrosis transmembrane regulator protein (CFTR) or hemoglobins or other proteins involved in genetic diseases.

In still another aspect of the invention, the multiple capture/amplification probes may target, for example, all strains of a particular pathogen, e.g. the  
5 Hepatitis C Virus (HCV), and amplification probes may be tailored to detect and further identify individual HCV genotypes of the pathogen (e.g. HCV).

In a further embodiment, two capture/amplification probes are utilized. e.g. as depicted in Fig. 4. This provides a total specific sequence of the capture/amplification probes complementary and hybridizable to the target nucleic  
10 acid that can be twice as long as that of a single capture/amplification probe, thereby affording an even higher capture efficiency.

The pair of capture/amplification probes, e.g. as shown in Fig. 4, may each have a 3' sequence complementary to the target nucleic acid, and a biotin moiety at its 5' terminus capable of interacting with streptavidin coated paramagnetic beads.  
15 Alternatively, the pair of capture/amplification probes may each have a 5' sequence complementary to the target nucleic acid, and a biotin moiety at its 3' terminus capable of interacting with streptavidin coated paramagnetic beads.

Further, the present method in which the ligated target probe is amplified by PCR permits the detection of multiple targets in a single reaction, as illustrated  
20 in Fig. 13 and designated as multiplex LD-PCR. In the prior art methods of PCR amplification of a target nucleic acid, attempts to detect multiple targets with multiple primer pairs in a single reaction vessel have been limited by varying primer efficiencies and competition among primer pairs. In contrast, in the present method each capture/amplification probe has a target specific region and a generic  
25 region. In multiplex LD-PCR according to the present invention, the generic regions to which the PCR primers bind may be common to all capture/amplification probes. Thus multiple pairs of capture/amplification probes having specificity for multiple targets may be used, but only one pair of generic



PCR primers are needed to amplify the ligated capture/amplification probes. By varying the length of the target specific regions of the capture/amplification probes, amplified PCR products corresponding to a particular target can be identified by size.

5           The PCR products may also be identified by an enzyme-linked immunosorbent assay (ELISA). The PCR product may be labeled during amplification with an antigen, for example digoxigenin. The labeled PCR product is then captured on a microtiter plate having thereon a nucleic acid probe that hybridizes to the target specific region of the amplification probe, which region is  
10 present in the amplified product. The labeled captured product may then be detected by adding an enzyme conjugated antibody against the antigen label, for example horseradish peroxidase anti-digoxigenin antibody, and a color indicator to each well of the microtiter plate. The optical density of each well provides a measure of the amount of PCR product, which in turn indicates the presence of the  
15 target nucleic acid in the original sample.

          In still further embodiments, the present invention may utilize a single amplifiable "full length probe" and one or more capture/amplification probes as shown in Fig. 6. Further, the hybridized nucleic acid duplex, comprising of the target nucleic acid, for example, HCV RNA, and the capture/amplification probes  
20 and full length amplification probes, also referred to as amplification sequences, can be released from the magnetic beads by treating the hybridized duplex molecule with RNAase H. Alternatively, the hybridized duplex, comprising of the target nucleic acid, e.g. DNA, and the capture/amplification probes and full length amplification probes, can be released from the magnetic beads by treating the  
25 hybridized duplex molecule with appropriate restriction enzymes, as described above.

          When a full length amplification probe is employed to detect a target nucleic acid sequence, the probe may be utilized in amplification reactions such as

PCR, without having to use the ligation step described above. This latter approach, in particular, simplifies the assay and is especially useful when at least  $10^4$  target nucleic acid molecules are available in the testing sample, so that the chances of non-specific binding in a ligation independent detection reaction are reduced. In  
5 most clinical detection assays, the target nucleic acid (such as a pathogen), is present at  $>10^5$  molecules/ml. of sample, and thus would be amenable to detection and amplification by this method.

A still further aspect of the present invention utilizes one or more capture/amplification probes, each containing a biotin moiety, and a single  
10 amplification probe, also referred to as an amplification sequence, that hybridizes to the target nucleic acid and circularizes upon ligation of its free termini, as shown in Fig. 7. The amplification probe may be designed so that complementary regions (see e.g. the region shown in bold in Fig.7) of the probe that are hybridizable to the target nucleic acid sequence are located at each end of the probe (as described in  
15 Nilsson et al., 1994, Science 265:2085-2088). When the probe hybridizes with the target, its termini are placed adjacent to each other, resulting in the formation of a closed circular molecule upon ligation with a linking agent such as a ligase enzyme. This circular molecule may then serve as a template during an amplification step, e.g. PCR, using primers such as those depicted in Fig. 7. The  
20 circular molecule may also be amplified by RAM, as described hereinbelow, or detected by a modified HSAM assay, as described hereinbelow.

For example, the probe, described above, can be used to detect different genotypes of a pathogen, e.g. different genotypes of HCV from serum specimens. Genotype specific probes can be designed, based on published HCV sequences  
25 (Stuyver et al., 1993, J. Gen. Virol. 74: 1093-1102), such that a mutation in the target nucleic acid is detectable since such a mutation would interfere with (1) proper hybridization of the probe to the target nucleic acid and (2) subsequent ligation of the probe into a circular molecule. Because of the nature of the

circularized probe, as discussed below, unligated probes may be removed under stringent washing conditions.

The single, full length, ligation-dependent circularizable probe, as utilized in the method, affords greater efficiency of the detection and amplification of the target nucleic acid sequence. Due to the helical nature of double-stranded nucleic acid molecules, circularized probes are wound around the target nucleic acid strand. As a result of the ligation step, the probe may be covalently bound to the target molecule by means of catenation. This results in immobilization of the probe on the target molecule, forming a hybrid molecule that is substantially resistant to stringent washing conditions. This results in significant reduction of non-specific signals during the assay, lower background noise and an increase in the specificity of the assay.

Another embodiment of the present invention provides a method of reducing carryover contamination and background in amplification methods utilizing circular probes. The present ligation-dependent amplification methods, unlike conventional amplification methods, involve amplification of the ligated probe(s) rather than the target nucleic acid. When the ligated probe is a closed circular molecule, it has no free ends susceptible to exonuclease digestion. After probe ligation, i.e. circularization, treatment of the reaction mixture with an exonuclease provides a "clean-up" step and thus reduces background and carryover contamination by digesting unligated probes or linear DNA fragments but not closed circular molecules. The covalently linked circular molecules remain intact for subsequent amplification and detection. In conventional PCR, the use of exonuclease to eliminate single stranded primers or carryover DNA fragments poses the risk that target nucleic acid will also be degraded. The present invention does not suffer this risk because target nucleic acid is not amplified. In a preferred embodiment, the exonuclease is exonuclease III, exonuclease VII, mung bean

nuclease or nuclease BAL-31. Exonuclease is added to the reaction after ligation and prior to amplification, and incubated, for example at 37°C for thirty minutes.

It is further contemplated to use multiple probes which can be ligated to form a single covalently closed circular probe. For example, a first probe is  
5 selected to hybridize to a region of the target. A second probe is selected such that its 3' and 5' termini hybridize to regions of the target that are adjacent but not contiguous with the 5' and 3' termini of the first probe. Two ligation events are then required to provide a covalently closed circular probe. By using two ligases, e.g. an enzymatic and a chemical ligase, to covalently close the probe, the order of  
10 the ligations can be controlled. This embodiment is particularly useful to identify two nearby mutations in a single target.

The circularized probe can also be amplified and detected by the generation of a large polymer. The polymer is generated through the rolling circle extension of primer 1 along the circularized probe and displacement of downstream  
15 sequence. This step produces a single stranded DNA containing multiple units which serves as a template for subsequent PCR, as depicted in Figs. 9 and 16. As shown therein, primer 2 can bind to the single stranded DNA polymer and extend simultaneously, resulting in displacement of downstream primers by upstream primers. By using both primer-extension/displacement and PCR, more detectable  
20 product is produced with the same number of cycles.

The circularized probe may also be detected by a modification of the HSAM assay. In this method, depicted in Fig. 14, the circularizable amplification probe contains, as described hereinabove, 3'- and 5' regions that are complementary to adjacent regions of the target nucleic acid. The circularizable probes further  
25 contain a non-complementary, or generic linker region. In the present signal amplification method, the linker region of the circularizable probe contains at least one pair of adjacent regions that are complementary to the 3' and 5' regions of a first generic circularizable signal probe (CS-probe). The first CS-probe contains,

in its 3' and 5' regions, sequences that are complementary to the adjacent regions of the linker region of the circularizable amplification probe. Binding of the circularizable amplification probe to the target nucleic acid, followed by ligation, results in a covalently linked circular probe having a region in the linker available  
5 for binding to the 3' and 5' ends of a first CS-probe. The addition of the first CS-probe results in binding of its 3' and 5' regions to the complementary regions of the linker of the circular amplification probe. The 3' and 5' regions of the CS-probe are joined by the ligating agent to form a closed circular CS-probe bound to the closed circular amplification probe. The first CS-probe further contains a linker region  
10 containing at least one pair of adjacent contiguous regions designed to be complementary to the 3' and 5' regions of a second CS-probe.

The second CS-probe contains, in its 3' and 5' regions, sequences that are complementary to the adjacent regions of the linker region of the first CS-probe. The addition of the second CS-probe results in binding of its 3' and 5' regions to  
15 the complementary regions of the linker of the first CS-probe. The 3' and 5' regions of the second CS-probe are joined by the ligating agent to form a closed circular CS-probe, which is in turn bound to the closed circular amplification probe.

By performing the above-described method with a multiplicity of CS-  
20 probes having multiple pairs of complementary regions, a large cluster of chained molecules is formed on the target nucleic acid. In a preferred embodiment, three CS-probes are utilized. In addition to the 3' and 5' regions, each of the CS-probes has one pair of complementary regions that are complementary to the 3' and 5' regions of a second CS-probe, and another pair of complementary regions that are  
25 complementary to the 3' and 5' regions of the third CS-probe. By utilizing these "trivalent" CS-probes in the method of the invention, a cluster of chained molecules as depicted in Fig. 14 is produced.

Following extensive washing to remove non-specific chain reactions that are unlinked to the target, the target nucleic acid is then detected by detecting the cluster of chained molecules. The chained molecules can be easily detected by digesting the complex with a restriction endonuclease for which the recognition sequence has been uniquely incorporated into the linker region of each CS-probe. Restriction endonuclease digestion results in a linearized monomer that can be visualized on a polyacrylamide gel. Other methods of detection can be effected by incorporating a detectable molecule into the CS-probe, for example digoxigenin, biotin, or a fluorescent molecule, and detecting with anti-digoxinin, streptavidin, or fluorescence detection. Latex agglutination, as described for example by Essers et al. (1980) *J. Clin. Microbiol.* 12, 641, may also be used. Such nucleic acid detection methods are known to one of ordinary skill in the art.

Moreover, in a special application, the amplification probes and/or amplification sequences as described above, can be used for *in situ* LD-PCR assays. *In situ* PCR may be utilized for the direct localization and visualization of target viral nucleic acids and may be further useful in correlating viral infection with histopathological finding.

Current methods assaying for target viral RNA sequences have utilized RT PCR techniques for this purpose (Nuovo et al., 1993, *Am. J. Surg. Pathol.* 17(7):683-690). In this method cDNA, obtained from target viral RNA by *in situ* reverse transcription, is amplified by the PCR method. Subsequent intracellular localization of the amplified cDNA can be accomplished by *in situ* hybridization of the amplified cDNA with a labelled probe or by the incorporation of labelled nucleotide into the DNA during the amplification reaction.

However, the RT PCR method suffers drawbacks which are overcome by the present invention. For example, various tissue fixatives used to treat sample tissues effect the crosslinking of cellular nucleic acids and proteins, e.g. protein-RNA and RNA-RNA complexes and hinder reverse transcription, a key step in

RT-PCR. Moreover, secondary structures in target RNA may also interfere with reverse transcription. Further, the application of multiplex PCR to RT PCR for the detection of multiple target sequences in a single cell can present significant problems due to the different efficiencies of each primer pair.

5           The method of the present invention utilizes one or more amplification probes and/or amplification sequences, as described above, and the LD-PCR technique to locate and detect *in situ* target nucleic acid, which offers certain advantages over the RT-PCR method. First, since hybridization of the probe to target nucleic acid and subsequent amplification of the probe sequences eliminates  
10 the reverse transcription step of the RT-PCR method, the secondary structure of the target RNA does not affect the outcome of the assay. Moreover, the crosslinking of target nucleic acids and cellular proteins due to tissue fixatives, as discussed above, does not interfere with the amplification of probe sequences since there is no primer extension of the target RNA as in the RT-PCR method.

15           In particular, amplification probes according to the present invention may be designed such that there are common primer-binding sequences within probes detecting different genotypic variants of a target pathogen. This enables the assay to detect multiple targets in a single sample. For example, and not by way of limitation, the assay may utilize two or more amplification probes according to this  
20 method to detect HCV RNA and  $\beta$ -actin RNA, whereby the  $\beta$ -actin probe serves as an internal control for the assay.

          Furthermore, the primer-binding sequences in the probe may be designed to  
(1) minimize non-specific primer oligomerization and (2) achieve superior primer-binding and increased yield of PCR products, thereby increasing sensitivity of the  
25 assay.

          Since the amplification probe circularizes after binding to target nucleic acid to become a circular molecule, multimeric products may be generated during

polymerization, so that amplification products are easily detectable, as described above, as shown in Figs. 9 and 16.

An *in situ* LD-PCR assay to detect target nucleic acids in histological specimens according to the present invention utilizes a ligation dependent full  
5 length amplification probe, and involves the following steps:

Sample tissue, e.g. liver, that may be frozen, or formalin-fixed and embedded in paraffin, is sectioned and placed on silane-coated slides. The sections may be washed with xylene and ethanol to remove the paraffin. The sections may then be treated with a proteolytic enzyme, such as trypsin, to increase membrane  
10 permeability. The sections may be further treated with RNAase-free DNAase to eliminate cellular DNA.

An amplification probe may be suspended in a suitable buffer and added to the sample sections on the slide and allowed to hybridize with the target sequences. Preferably, the probe may dissolved in 2 x SSC with 20% formamide, added to the  
15 slide, and the mixture incubated for 2 hours at 37°C for hybridization to occur. The slide may be washed once with 2 x SSC and twice with 1 x ligase buffer before DNA ligase may be applied to the sample. Preferably, 1U/20µl of the ligase enzyme may be added to each slide, and the mixture incubated at 37°C for 2 hours to allow circularization of the probe. The slide may be washed with 0.2 x SSC  
20 (high stringency buffer) and 1 x PCR buffer to remove unligated probes before the next step of amplification by PCR. The PCR reaction mixture, containing the amplification primers and one or more labelled nucleotides is now added to the sample on the slide for the amplification of the target sequences. The label on the nucleotide(s) may be any signal generating moiety, including, *inter alia*,  
25 radioisotopes, e.g., <sup>32</sup>P or <sup>3</sup>H, fluorescent molecules, e.g., fluorescein and chromogenic molecules or enzymes, e.g., peroxidase, as described earlier. Chromogenic agents are preferred for detection analysis, e.g., by an enzyme linked chromogenic assay.



In a still preferred aspect, digoxinin-labelled nucleotides are utilized. In such cases the PCR product, tagged with digoxinin-labelled nucleotides is detectable when incubated with an antidigoxinin antibody-alkaline phosphatase conjugate. The alkaline phosphatase-based colorimetric detection utilizes nitroblue tetrazolium, which, in the presence of 5-Bromo-4-chloro-3-indolylphosphate, yields a purple-blue precipitate at the amplification site of the probe.

In one aspect of the present invention, the ligation and the PCR amplification step of the *in situ* LD-PCR detection method can be carried out simultaneously and at a higher temperature, by using a thermostable ligase enzyme to circularize the amplification probe.

In accordance with the present invention, further embodiments of *in situ* LD-PCR may utilize amplification probes that are designed to detect various genotypic variants of a pathogen e.g. HCV, that are based on the known HCV sequences of these variants (Stuyver et al., 1993, J.Gen. Vir. 74:1093-1102). For example, different type-specific probes may be added together to the sample, and detection of HCV sequences and amplification of the probe sequences carried out by *in situ* LD-PCR as described above. Next, the amplified probe sequences are assayed for the presence of individual variant genotypes by *in situ* hybridization with type specific internal probes that are labelled to facilitate detection.

In certain aspects of the invention, the target nucleic acid sequence may be directly detected using the various amplification probes and/or amplification sequences described above, without amplification of these sequences. In such aspects, the amplification probes and/or amplification sequences may be labelled so that they are detectable.

In embodiments of the present invention utilizing a ligation dependent circularizable probe, the resulting circular molecule may be conveniently amplified by the ramification-extension amplification method (RAM), as depicted in Fig. 19. Amplification of the circularized probe by RAM adds still further advantages to the

methods of the present invention by allowing up to a million-fold amplification of the circularized probe under isothermal conditions. RAM is illustrated in Fig. 19.

The single, full length, ligation dependent circularizable probe useful for RAM contains regions at its 3' and 5' termini that are hybridizable to adjacent but  
5 not contiguous regions of the target molecule. The circularizable probe is designed to contain a 5' region that is complementary to and hybridizable to a portion of the target nucleic acid, and a 3' region that is complementary to and hybridizable to a portion of the target nucleic acid adjacent to the portion of the target that is complementary to the 5' region of the probe. The 5' and 3' regions of the  
10 circularizable probe may each be from about 20 to about 35 nucleotides in length. In a preferred embodiment, the 5' and 3' regions of the circularizable probe are about 25 nucleotides in length. The circularizable probe further contains a region designated as the linker region. In a preferred embodiment the linker region is from about 30 to about 60 nucleotides in length. The linker region is composed of  
15 a generic sequence that is neither complementary nor hybridizable to the target sequence.

The circularizable probe suitable for amplification by RAM is utilized in the present method with one or more capture/amplification probes, as described hereinabove. When the circularizable probe hybridizes with the target nucleic acid,  
20 its 5' and 3' termini become juxtaposed. Ligation with a linking agent results in the formation of a closed circular molecule.

Amplification of the closed circular molecule is effected by adding a first extension primer (Ext-primer 1) to the reaction. Ext-primer 1 is complementary to and hybridizable to a portion of the linker region of the circularizable probe, and is  
25 preferably from about 15 to about 30 nucleotides in length. Ext-primer 1 is extended by adding sufficient concentrations of dNTPs and a DNA polymerase to extend the primer around the closed circular molecule. After one revolution of the circle, i.e., when the DNA polymerase reaches the Ext-primer 1 binding site, the

polymerase displaces the primer and its extended sequence. The polymerase thus continuously "rolls over" the closed circular probe to produce a long single strand DNA, as shown in Figure 19.

The polymerase useful for amplification of the circularized probe by RAM  
5 may be any polymerase that lacks 3' - 5' exonuclease activity, that has strand displacement activity, and that is capable of primer extension of at least about 1000 bases. (Exo-)Klenow fragment of DNA polymerase, *Thermococcus litoralis* DNA polymerase (Vent (exo) DNA polymerase, New England Biolabs) and phi29 polymerase (Blanco et al., 1994, Proc. Natl. Acad. Sci. USA 91:12198) are  
10 preferred polymerases. *Thermus aquaticus* (Taq) DNA polymerase is also useful in accordance with the present invention. Contrary to reports in the literature, it has been found in accordance with the present invention that Taq DNA polymerase has strand displacement activity.

Extension of Ext-primer 1 by the polymerase results in a long single  
15 stranded DNA of repeating units having a sequence complementary to the sequence of the circularizable probe. The single stranded DNA may be up to 10Kb, and for example may contain from about 20 to about 100 units, with each unit equal in length to the length of the circularizable probe, for example about 100 bases. As an alternative to RAM, detection may be performed at this step if the  
20 target is abundant or the single stranded DNA is long. For example, the long single stranded DNA may be detected at this stage by visualizing the resulting product as a large molecule on a polyacrylamide gel.

In the next step of amplification by RAM, a second extension primer (Ext-primer 2) is added. Ext-primer 2 is preferably from about 15 to about 30  
25 nucleotides in length. Ext-primer 2 is identical to a portion of the linker region that does not overlap the portion of the linker region to which Ext-primer 1 is complementary. Thus each repeating unit of the long single stranded DNA contains a binding site to which Ext-primer 2 hybridizes. Multiple copies of the

Ext-primer 2 thus bind to the long single stranded DNA, as depicted in Fig. 19, and are extended by the DNA polymerase. The primer extension products displace downstream primers with their corresponding extension products to produce multiple displaced single stranded DNA molecules, as shown in Fig. 19. The displaced single strands contain binding sites for Ext-primer 1 and thus serve as templates for further primer extension reactions to produce the multiple ramification molecule shown in Fig. 19. The reaction comes to an end when all DNA becomes double stranded.

The DNA amplified by RAM is then detected by methods known in the art for detection of DNA. Because RAM results in exponential amplification, the resulting large quantities of DNA can be conveniently detected, for example by gel electrophoresis and visualization for example with ethidium bromide. Because the RAM extension products differ in size depending upon the number of units extended from the closed circular DNA, the RAM products appear as a smear or ladder when electrophoresed. In another embodiment, the circularizable probe is designed to contain a unique restriction site, and the RAM products are digested with the corresponding restriction endonuclease to provide a large amount of a single sized fragment of one unit length i.e., the length of the circularizable probe. The fragment can be easily detected by gel electrophoresis as a single band. Alternatively, a ligand such as biotin or digoxigenin can be incorporated during primer extension and the ligand-labeled single stranded product can be detected as described hereinabove.

The RAM extension products can be detected by other methods known in the art, including, for example, ELISA, as described hereinabove for detection of PCR products.

In other embodiments of the present invention, the RAM assay is modified to increase amplification. In one embodiment, following the addition of Ext-primer 2, the reaction temperature is periodically raised to about 95°C. The rise in

temperature results in denaturation of double stranded DNA, allowing additional binding of Ext-primers 1 and 2 and production of additional extension products. Thus, PCR can be effectively combined with RAM to increase amplification, as depicted in Fig. 16.

5           In another embodiment, the Ext-2 primer (and thus the identical portion of the linker region of the circularizable probe) is designed to contain a promoter sequence for a DNA-dependent RNA polymerase. RNA polymerases and corresponding promoter sequences are known in the art, and disclosed for example by Milligan et al. (1987) *Nucleic Acid Res.* 15:8783. In a preferred embodiment  
10 the RNA polymerase is bacteriophage T3, T7, or SP6 RNA polymerase. Addition of the Ext-primer 2 containing the promoter sequence, the corresponding RNA polymerase and rNTPs, allows hybridization of Ext-primer 2 to the growing single-stranded DNA to form a functional promoter, and transcription of the downstream sequence into multiple copies of RNA. This embodiment of the invention is  
15 illustrated in Fig. 17. In this embodiment, both RAM and transcription operate to produce significant amplification of the probe. The RNA can be detected by methods known to one of ordinary skill in the art, for example, polyacrylamide gel electrophoresis, radioactive or nonradioactive labeling and detection methods (Boehringer Mannheim), or the Sharp detection assay (Digene, Md.). Detection of  
20 the RNA indicates the presence of the target nucleic acid.

          In another embodiment, Ext-primer 1 and the corresponding part of the linker region of the circular probe are designed to have a DNA-dependent RNA polymerase promoter sequence incorporated therein. Thus when Ext-primer 1 binds the circularized probe, a functional promoter is formed and the circularized  
25 probe acts as a template for RNA transcription upon the addition of RNA polymerase and rNTPs. The downstream primer and its RNA sequence are displaced by the RNA polymerase, and a large RNA polymer can be made. The RNA polymer may be detected as described hereinabove. Alternatively, the

circular probe can be cleaved into a single stranded DNA by adding a restriction enzyme such as EcoRI. The restriction site is incorporated into the 5' end of extension primer 1, as shown in Fig. 20.

Reagents for use in practicing the present invention may be provided  
5 individually or may be packaged in kit form. For example, kits might be prepared comprising one or more first, e.g., capture/amplification-1 probes and one or more second, e.g., amplification-probe-2 probes, preferably also comprising packaged combinations of appropriate generic primers. Kits may also be prepared comprising one or more first, e.g., capture/amplification-1 probes and one or more  
10 second, full length, ligation-independent probes, e.g., amplification-probe-2. Still other kits may be prepared comprising one or more first, e.g., capture/amplification-1 probes and one or more second, full length, ligation-dependent circularizable probes, e.g., amplification-probe-2. Such kits may preferably also comprise packaged combinations of appropriate generic primers.  
15 Optionally, other reagents required for ligation (e.g., DNA ligase) and, possibly, amplification may be included. Additional reagents also may be included for use in quantitative detection of the amplified ligated amplification sequence, e.g., control templates such as an oligodeoxyribonucleotide corresponding to nanovariant RNA. Further, kits may include reagents for the *in situ* detection of  
20 target nucleic acid sequences e.g. in tissue samples. The kits containing circular probes may also include exonuclease for carryover prevention.

The arrangement of the reagents within containers of the kit will depend on the specific reagents involved. Each reagent can be packaged in an individual container, but various combinations may also be possible.

25 The present invention is illustrated with the following examples, which are not intended to limit the scope of the invention.

EXAMPLE 1DETECTION OF HIV-1 RNA IN A SAMPLE.Preparation of Oligonucleotide Probes

A pair of oligodeoxyribonucleotide probes, designated Capture/Amp-  
 5 probe-1 (HIV) and Amp-probe-2 (HIV), respectively for detecting the gag region  
 of HIV-1 RNA were prepared by automated synthesis via an automated DNA  
 synthesizer (Applied Biosystems, Inc.) using known oligonucleotide synthetic  
 techniques. Capture/Amp-probe-1 (HIV) is an oligodeoxyribonucleotide  
 comprising 59 nucleotides and a 3' biotin moiety, which is added by using a 3'-  
 10 biotinylated nucleoside triphosphate as the last step in the synthesis. The  
 Capture/Amp-probe-1 (HIV) used in this Example has the following nucleotide  
 sequence (also listed below as SEQ ID NO. 1):

```

      1           11           21
15  5' - CCATCTTCCT GCTAATTTTA AGACCTGGTA

      31           41           51
      ACAGGATTTC CCCGGAATT CAAGCTTGG - 3'
  
```

20

The nucleotides at positions 24-59 comprise the generic 3' end of the probe.  
 Within this region are recognition sequences for *Sma*I (CCCGGG), *Eco*RI  
 (GAATTC) and *Hind*III (AAGCTT) at nucleotides 41-46, 46-51 and 52-57,  
 respectively. The 5' portion of the sequence comprising nucleotides 1-23 is  
 25 complementary and hybridizes to a portion of the gag region of HIV-1 RNA.

Amp-probe-2 (HIV) is a 92 nucleotide oligodeoxyribonucleotide which has  
 the following sequence (also listed below as SEQ ID NO. 2):

```

      1           11           21           31           41
5' - GGGTTGACCC GGCTAGATCC GGGTGTGTCC TCTCTAACTT TCGAGTAGAG

      51           61           71           81           91
5   AGGTGAGAAA ACCCCGTTAT CTGTATGTAC TGTTTTTACT GG - 3'

```

The nucleotides at positions 71-92 comprise the 3' specific portion of this probe, complementary and hybridizable to a portion of the gag region of HIV-1 RNA immediately adjacent to the portion of the gag region complementary to nucleotides 1-23 of Capture/Amp-probe-1 (HIV). Nucleotides 1-70 comprise the generic 5' portion of Amp-probe-2 (HIV).

Ligation of the 5' end of Capture/Amp-probe-1 (HIV) to the 3' end of Amp-probe-2 (HIV) using  $T_4$  DNA ligase creates the ligated amplification sequence (HIV) having the following sequence (also listed below as SEQ ID NO. 3):

```

      1           11           21           31
5' - GGGTTGACCC GGCTAGATCC GGGTGTGTCC TCTCTAACTT

      41           51           61           71
20   TCGAGTAGAG AGGTGAGAAA ACCCCGTTAT CTGTATGTAC

      81           91           101          111
      TGTTTTTACT GGCCATCTTC CTGCTAATTT TAAGACCTGG

      121          131          141          151
25   TAACAGGATT TCCCCGGGAA TTCAAGCTTG G - 3'

```



This ligated amplification sequence is 151 nucleotides long, which provides an ideal sized template for PCR.

The generic nucleotide sequences of the ligated amplification sequence (HIV) comprising nucleotides 116-135 (derived from nucleotides 24-43 of Capture/Amp-probe-1 (HIV)) and nucleotides 1-70 (derived from nucleotides 1-70 of Amp-probe-2 (HIV)) correspond in sequence to nucleotides 1-90 of the (-) strand of the WSI nanovariant RNA described by Schaffner *et al.*, *J. Molec. Biol.* 117:877-907 (1977). WSI is one of a group of three closely related 6 S RNA species, WSI, WSII and WSIII, which arose in Q $\beta$  replicase reactions without added template. Schaffner *et al.* termed the three molecules, "nanovariants."

The 90 nucleotide long oligodeoxyribonucleotide corresponding to nucleotides 1-90 of the WSI (-) strand has the following sequence (also listed below as SEQ ID NO. 4):

15            1                    11                    21                    31                    41  
5' - GGGTTGACCC GGCTAGATCC GGGTGTGTCC TCTCTAACTT TCGAGTAGAG  
  
                  51                    61                    71                    81  
                  AGGTGAGAAA ACCCCGTTAT CCTGGTAACA GGATTTCCCC - 3'

20

Two generic oligodeoxynucleotide primers were also synthesized for use in PCR amplification of the ligated amplification sequence. Primer-1, which has a length of 21 nucleotides, is complementary to the 3' sequence of Capture/Amp-probe-1 (HIV) (nucleotides 38-58) and has the sequence (also listed below as SEQ ID NO. 5):

                  1                    11  
5' - CAAGCTTGAA TTCCCGGGGA A - 3'



(SEQ ID NO. 3), which can serve as a template for PCR amplification. The ligation reaction was carried out in the presence of a 1X ligation buffer comprising a 1:10 dilution of 10X T<sub>4</sub> DNA ligase ligation buffer (660mM Tris-HCl, 50mM MgCl<sub>2</sub>, 10mM dithioerythritol, 10mM ATP - pH 7.5 at 20°C) obtained from  
5 Boehringer Mannheim.

The paramagnetic beads containing bound ligated amplification sequence (HIV) were washed with 1X T<sub>4</sub> DNA ligase ligation buffer and resuspended in 100 µl of 1X T<sub>4</sub> DNA ligase ligation buffer. 20 µl of bead suspension was removed for the ligation reaction. 2 µl T<sub>4</sub> DNA ligase was added to the reaction mixture, which  
10 was incubated at 37°C for 60 minutes.

For PCR amplification of the bound ligated amplification sequence (HIV), 80 µl of a PCR reaction mixture comprising *Taq* DNA polymerase, the two generic PCR primers (SEQ ID NOS. 5 and 6), a mixture of deoxynucleoside triphosphates and <sup>32</sup>P-dCTP was added to the ligation reaction. A two temperature PCR reaction  
15 was carried out for 30 cycles in which hybrid formation and primer extension was carried out at 65°C for 60 seconds and denaturation was carried out at 92°C for 30 seconds.

After 30 cycles, 10 µl of the reaction mixture was subjected to electrophoresis in a 10% polyacrylamide gel and detected by autoradiography (Fig.  
20 3, Lane A). As a control, nanovariant DNA (SEQ ID NO. 4) was also subjected to 30 cycles of two temperature PCR, under the same conditions as for the ligated amplification sequence (HIV), electrophoresed and autoradiographed (Fig. 3, Lane B). As can be seen from Fig. 3, the amplified ligated amplification sequence (HIV) migrated in a single band (151 nucleotides) at a slower rate than the  
25 amplified nanovariant DNA (90 nucleotides). The results also indicated that unligated first and second probes were either not amplified or detected.

EXAMPLE 2DIRECT DETECTION OF HIV-1 RNA IN A SAMPLE.

The ability of the present method to directly detect the presence of HIV-1 RNA in a sample was also determined. The probes used in this Example  
5 are the same as in Example 1 (SEQ ID NOS. 1 and 2). For direct detection, Amp-probe-2 (HIV) (SEQ ID NO. 2) was labeled at its 5' end with  $^{32}\text{P}$  by the  $T_4$  phosphokinase reaction using  $^{32}\text{P}$ - $\gamma$ -ATP. The various reaction mixtures were as follows:

- 10 1. Streptavidin-coated paramagnetic beads, 3'-biotinylated Capture/Amp-probe-1 (HIV) (SEQ ID NO. 1), Amp-probe-2 (HIV) (SEQ ID NO. 2) 5'( $^{32}\text{P}$ ), HIV-1 RNA transcript.
2. Streptavidin-coated paramagnetic beads, 3'-biotinylated Capture/Amp-probe-1 (HIV), Amp-probe-2 (HIV) 5'( $^{32}\text{P}$ ).
- 15 3. Streptavidin-coated paramagnetic beads, Amp-probe-2 (HIV) 5'( $^{32}\text{P}$ ), HIV-1 RNA transcript.

Hybridizations, using each of the above three reaction mixtures, were carried out in 20 $\mu\text{l}$  of a 1M GnSCN buffer comprising 1M GnSCN, 0.5% NP-40 (Nonidet P-40,  
N-lauroylsarcosine, Sigma Chemical Co., St Louis, MO). 80mM EDTA, 400mM  
20 Tris HCl (pH 7.5) and 0.5% bovine serum albumin.

The reaction mixtures were incubated at 37°C for 60 minutes. After incubation, the reaction mixtures were subjected to a magnetic field as described in Example 1 and washed (200 $\mu\text{l}$ /wash) two times with 1M GnSCN buffer and three times with a 300mM KCl buffer comprising 300mM KCL, 50mM Tris-HCl (pH  
25 7.5), 0.5% NP-40 and 1mM EDTA. The amount of  $^{32}\text{P}$  - labeled Amp-probe-2 (HIV) that was retained on the paramagnetic beads after washing is reported in Table 1 as counts-per-minute (CPM). The results indicate that, only in the presence of both target HIV RNA and Capture/Amp-probe-1 (HIV), is a significant

amount of Amp-probe-2 retained on the beads and detected by counting in a  $\beta$ -scintillation counter.

TABLE 1

5

| Capture of target HIV RNA with Capture/Amp-probe-1(HIV) |  |  |
|---|--|--|
| Reaction Mixture  | CPM<br>(after 2 washes<br>with 1M GnSCN) | CPM<br>(after 3 washes<br>with 0.3M KCl) |
| 10 1.   | 6254                                     | 5821                                     |
| 2.  | 3351                                     | 2121                                     |
| 3.  | 3123                                     | 2021                                     |

15

EXAMPLE 3

DETECTION OF MYCOBACTERIUM  
AVIUM-INTRACELLULAIRE (MAI) IN PATIENT SAMPLES.

20

A recent paper (Boddinghaus *et al.*, J. Clin. Microbiol. 28:1751, 1990) has reported successful identification of *Mycobacteria* species and differentiation among the species by amplification of 16S ribosomal RNAs (rRNAs). The advantages of using bacterial 16S rRNAs as targets for amplification and identification were provided by Rogall *et al.*, J. Gen. Microbiol., 136:1915, 1990 as follows: 1) rRNA is an essential constituent of bacterial ribosomes; 2) comparative analysis of rRNA sequences reveals some stretches of highly conserved sequences and other stretches having a considerable amount of variability; 3) rRNA is present in large copy numbers, i.e.  $10^3$  to  $10^4$  molecules per cell, thus facilitating the development of sensitive detection assays; 4) the nucleotide sequence of 16S

25

30

rRNA can be rapidly determined without any cloning procedures and the sequence of most Mycobacterial 16S rRNAs are known.

Three pairs of Capture/Amp-probe-1 and Amp-probe-2 probes are prepared by automated oligonucleotide synthesis (as above), based on the 16S rRNA sequences published by Boddinghaus *et al.*, and Rogall *et al.* The first pair of probes (MYC) is generic in that the specific portions of the first and second probes are hybridizable to 16S RNA of all Mycobacteria spp; this is used to detect the presence of any mycobacteria in the specimen. The second pair of probes (MAV) is specific for the 16S rRNA of *M. avium*, and the third pair of probes (MIN) is specific for the 16S rRNA of *M. intracellulaire*. The extremely specific ligation reaction of the present method allows the differentiation of these two species at a single nucleotide level.

A. The probes that may be used for generic detection of all Mycobacter spp, comprise a first and second probe as in Example 1. The first probe is a 3' biotinylated - Capture/Amp-probe-1 (MYC), an oligodeoxyribonucleotide of 54 nucleotides in length with the following sequence (also listed below as SEQ ID NO. 7):

```

      1           11           21           31
20  5' - CAGGCTTATC CCGAAGTGCC TGGTAACAGG ATTTCCCCGG

      41           51
      GAATTCAAGC TTGG - 3'

```

25

Nucleotides 1-18, at the 5' end of the probe are complementary to a common portion of Mycobacterial 16S rRNA, *i.e.*, a 16S rRNA sequence which is present in all Mycobacteria spp. The 3' portion of the probe, comprising nucleotides 19-54 is

identical in sequence to the 36 nucleotides comprising the generic portion of Capture/Amp-probe-1 (HIV) of Example 1.

The second probe is Amp-probe-2 (MYC), an oligodeoxyribonucleotide of 91 nucleotides in length, with the following sequence  
5 (also listed below as SEQ ID NO. 8):

```

      1           11           21           31
5' - GGGTTGACCC GGCTAGATCC GGGTGTGTCC TCTCTAACTT
10      41           51           61           71
      TCGAGTAGAG AGGTGAGAAA ACCCCGTTAT CCGGTATTAG
      81           91
      ACCCAGTTTC C - 3'

```

15

Nucleotides 71-91 at the 3' end of the probe are complementary to a common portion of 16S rRNA adjacent the region complementary to nucleotides 1-18 or Capture/Amp-probe-1 (MYC) disclosed above, common to all Mycobacteria spp.  
20 Nucleotides 1-70 at the 5' end of the probe comprise the same generic sequence set forth for Amp-probe-2 (HIV) in Example 1.

End to end ligation of the two probes, as in Example 1, provides ligated amplification sequence (MYC), 145 nucleotides in length, for detection of all Mycobacteria spp., having the following sequence (also listed below as SEQ ID  
25 NO. 9):

```

      1           11           21           31
5' - GGGTTGACCC GGCTAGATCC GGGTGTGTCC TCTCTAACTT

```

41                    51                    61                    71  
 TCGAGTAGAG AGGTGAGAAA ACCCCGTTAT CCGGTATTAG  
  
 81                    91                    101                    111  
 5    ACCCAGTTTC CCAGGCTTAT CCCGAAGTGC CTGGTAACAG  
  
 121                    131                    141  
 GATTTCCCCG GGAATTCAAG CTTGG - 3 '

10

B. The pair of probes for specific detection of M. avium are as follows:

The first probe is a 3' biotinylated-Capture/Amp-probe-1 (MAV), an oligodeoxyribonucleotide of 56 nucleotides in length with the following sequence (also listed below as SEQ ID NO. 10):

15

1                    11                    21                    31  
 5' - GAAGACATGC ATCCCGTGGT CCTGGTAACA GGATTTCCCC  
  
 41                    51  
 20    GGGAATTCAA GCTTGG - 3 '

Nucleotides 1-20 at the 5' - end are complementary to a portion of 16S rRNA specific for M. avium. Nucleotides 21-56 comprise the same generic sequence, as  
 25    above.

The second probe is Amp-probe-2 (MAV), an oligodeoxyribonucleotide of 90 nucleotides in length, with the following sequence (also listed below as SEQ ID NO. 11):



1                    11                    21                    31  
5' - GGGTTGACCC GGCTAGATCC GGGTGTGTCC TCTCTAACTT  
  
41                    51                    61                    71  
5     TCGAGTAGAG AGGTGAGAAA ACCCCGTTAT CGCTAAAGCG  
  
81  
CTTTCCACCA - 3'

10

Nucleotides 71-90 at the 3' end of the probe comprise the specific nucleotide sequence complementary to a region of 16S rRNA specific for M. avium, adjacent the specific sequence recognized by Capture/Amp-probe-1 (MAV). Nucleotides 1-70 comprise the same generic sequence as above.

15            End to end ligation of the two probes provides a 146 nucleotide long ligated amplification sequence (MAV) for detection of M. avium having the following sequence (also listed below as SEQ ID NO. 12):

1                    11                    21                    31  
20 5' - GGGTTGACCC GGCTAGATCC GGGTGTGTCC TCTCTAACTT

41                    51                    61                    71  
 TCGAGTAGAG AGGTGAGAAA ACCCCGTTAT CGCTAAAGCG  
  
 81                    91                    101                    111  
 5    CTTTCCACCA GAAGACATGC ATCCCGTGGT CCTGGTAACA  
  
 121                    131                    141  
 GGATTTCCCC GGAATTCAA GCTTGG - 3'

10

C. The pair of probes for specific detection of M. intracellulaire are as follows:

The first probe is a 3' - biotinylated Capture/Amp-probe-1 (MIN), an oligonucleotide of 56 nucleotides in length with the following sequence (also listed below as SEQ ID NO. 13):

15

1                    11                    21                    31  
 5' - AAAGACATGC ATCCCGTGGT CCTGGTAACA GGATTTCCCC

20

41                    51  
 GGAATTCAA GCTTGG - 3'

Nucleotides 1-20 at the 5' end are complementary to a portion of 16S rRNA  
 25 specific for M. intracellulaire. Nucleotides 21-56 comprise the same generic  
 sequence as above.

The second probe is Amp-probe-2 (MIN), an oligodeoxyribonucleotide or 90 nucleotides in length, with the following sequence (also listed below as SEQ ID NO. 14):

```
5           1           11           21           31
5' - GGGTTGACCC GGCTAGATCC GGGTGTGTCC TCTCTAACTT

           41           51           61           71
TCGAGTAGAG AGGTGAGAAA ACCCCGTTAT CGCTAAAGCG

10

           81
CTTTCCACCT - 3'
```

15

Nucleotides 71-90 at the 3' end of the probe comprise the specific nucleotide sequence complementary to a region of *M. intracellulaire* 16S rRNA adjacent the specific sequence recognized by Capture/Amp-probe-1 (MIN).

20 End to end ligation of the two probes provides a 146 nucleotide long ligated amplification sequence (MIN) for detection of *M. intracellulaire*, having the following sequence (also listed below as SEQ ID NO. 15):

```

      1             11             21             31
5' - GGGTTGACCC GGCTAGATCC GGGTGTGTCC TCTCTAACTT

      41             51             61             71
5   TCGAGTAGAG AGGTGAGAAA ACCCCGTTAT CGCTAAAGCG

      81             91             101            111
      CTTTCCACCT AAAGACATGC ATCCCGTGGT CCTGGTAACA

10  121             131             141
      GGATTCCCC GGAATTCAA GCTTGG - 3'

```

D. In order to detect the presence of the above Mycobacteria spp.,  
 15 patients' blood specimens are collected in Pediatric Isolator Tubes (Wampole  
 Laboratories, NJ). The Isolator's lysis centrifugation technique enables separation  
 of blood components, followed by lysis of leukocytes to improve recovery of  
 intracellular organisms (Shanson et al., J. Clin. Pathol. 41:687, 1988). After lysis,  
 about 120  $\mu$ l of concentrated material is dissolved in an equal volume of the 5M  
 20 GnSCN buffer of Example 1. The mixture is boiled for 30 minutes, which because  
 of the nature of mycobacterial cell walls, is required for lysis of Mycobacteria spp.  
 The subsequent procedures (i.e., capture, ligation, PCR and detection) are the same  
 as those employed in Example 1.

Before the PCR amplification, a direct detection is made by measuring  
 25 radioactivity representing  $^{32}\text{P}$ -5'-AMP-probe-2 captured on the magnetic beads.  
 After the unbound radioactively-labeled Amp-probe-2 is removed by extensive  
 washing, the target 16S rRNA molecules that are present in concentrations of more  
 than  $10^6$ /reaction is detectable. Target 16S rRNA that cannot be detected directly



Nucleotides 20-55 at the 3' end of the probe comprise the same 36 nucleotide generic sequence as in Capture/Amp-probe-1 (HIV) of Example 1.

Amp-probe-2 (HCV) is a 90 nucleotide long oligodeoxyribonucleotide having the following nucleotide sequence (also listed below as SEQ ID NO. 17):

5

1                                    11                                    21                                    31  
5' - GGGTTGACCC GGCTAGATCC GGGTGTGTCC TCTCTAACTT

10

41                                    51                                    61                                    71  
TCGAGTAGAG AGGTGAGAAA ACCCCGTTAT CCGGTGTACT

81

CACCGGTTC - 3'

15

Nucleotides 71-90 comprise the 3' specific portion of the probe, complementary and hybridizable to a portion of the HCV 5' UTR immediately adjacent to the portion of the HCV genome hybridizable to nucleotides 1-19 of Capture/Amp-probe-2 (HCV). Nucleotides 1-70 comprise the same generic sequence as in Amp-probe-2 (HIV) of Example 1.

20

End to end ligation of the two probes as in Example 1 provides a 145 nucleotide long ligated amplification sequence (HCV) for detection of HCV in a sample, having the sequence (also listed below as SEQ ID NO. 18):

25

1                                    11                                    21                                    31  
5' - GGGTTGACCC GGCTAGATCC GGGTGTGTCC TCTCTAACTT

41

51

61

71

TCGAGTAGAG AGGTGAGAAA ACCCCGTTAT CCGGTGTACT

81                    91                    101                    111  
 CACCGTTCC GCAGACCACT ATGGCTCTCC CTGGTAACAG

5

121                    131                    141  
 GATTCCCCG GGAATTCAAG CTTGG - 3'

10            The ligated amplification sequence (HCV) is amplified using a two  
 temperature PCR reaction as in Example 1. The PCR primers used for  
 amplification are the same two generic primers (SEQ ID NOS. 5 and 6) of  
 Example 1.

15

#### EXAMPLE 5

#### USE OF MULTIPLE CAPTURE AND AMPLIFICATION PROBES TO DETECT HCV RNA IN A SAMPLE.

20            A pair of amplification probes and two capture/amplification probes were  
 used to assay for and detect HCV RNA in a sample, thereby increasing the capture  
 efficiency of the assay.

25            The capture/amplification probes Capture/Amp-probe-1 (HCV A) (all  
 oligomers described in this Example are designated "(HCV A)" to distinguish from  
 the probes "(HCV)" of Example 4) having SEQ ID NO. 22 and Capture/Amp-  
 probe-1A (HCV A) having SEQ ID NO. 23 are designed and synthesized such that  
 their 5' termini are biotinylated and the 3' region of the probes comprises sequences  
 complementary to and hybridizable with sequences in the 5'UTR of HCV RNA  
 (Fig. 4). The generic nucleotide sequence at the 5' region of the probes that are not  
 hybridizable to the target nucleic acid sequence are designed and synthesized to

have random sequences and a GC content of, at least, 60%, and such that they exhibit minimal secondary structure e.g. hairpin or foldback structures.

Capture/Amp-probe-1 (HCV A) which is biotinylated at the 5' terminus, is a 45 nucleotide DNA oligomer, such that nucleotides 5 to 45 in the 3' region, are  
5 complementary to and hybridizable with sequences in the 5'UTR of the target HCV RNA, and that the oligomer has the following nucleotide sequence (also listed below as SEQ ID NO. 22):

5' - AAGAGCGTGA AGACAGTAGT TCCTCACAGG  
GGAGTGATTC

10 ATGGT - 3'

Capture/Amp-probe-1A (HCV A) which is also biotinylated at the 5' terminus, is also a 45 nucleotide DNA oligomer, such that nucleotides 5 to 45 in the 3' region are complementary to and hybridizable with sequences in the 5'UTR of HCV RNA that are immediately adjacent to the region of the 5'UTR of the HCV  
15 RNA hybridizable with Capture/Amp-probe-1 (HCV A) and such that the oligomer has the following nucleotide sequence (also listed below as SEQ ID NO. 23):

5' - AAGACCCAAC ACTACTCGGC TAGCAGTCTT  
GCGGGGGCAC

20 GCCCA - 3'

The two amplification probes Amp-probe-2 (HCV A) and Amp-probe-2A (HCV A) each contain a nucleotide sequence complementary to and hybridizable with the conserved 5'UTR of HCV RNA.

Amp-probe-2 (HCV A) is a 51 nucleotide oligomer such that nucleotides 1 to 30 in the 5' region are complementary to and hybridizable with sequences in the  
25 5'UTR of HCV RNA, and that the nucleotides 34 to 51 at the 3' terminus bind to and hybridize with PCR primer-3 and such that the oligomer has the following nucleotide sequence (also listed below as SEQ ID NO. 24):



5' - ACTCACCGGT TCCGCAGACC ACTATGGCTC  
GTTGTCTGTG

TATCTGCTAA C - 3'

Amp-probe-2A (HCV A) is a 69 nucleotide oligomer such that nucleotides  
5 40 to 69 in the 3' region are complementary to and hybridizable with sequences in  
the 5'UTR of HCV RNA genome immediately adjacent to the portion of the HCV  
RNA genome hybridizable to nucleotides 1-30 of Amp-probe-2 (HCV A) and such  
that the nucleotides 1 to 18 at the 5' terminus bind to and hybridize with PCR  
primer-4 and such that nucleotides 19 to 36 at the 5' terminus bind to and  
10 hybridize with PCR primer-5, and such that the oligomer has the following  
nucleotide sequence (also listed below as SEQ ID NO. 25):

5' - CAAGAGCAAC TACACGAATT CTCGATTAGG  
TTACTGCAGA

GGACCCGGTC GTCCTGGCAA TTCCGGTGT - 3'

15 End to end ligation of the two probes provides a 120 nucleotide ligated  
product, the ligation-amplification sequence (HCV A) that serves as a detectable  
sequence for HCV as well as a template for amplification reactions, and has the  
sequence (also listed below as SEQ ID NO. 26):

5' - CAAGAGCAAC TACACGAATT CTCGATTAGG TTACTGCAGA  
20 GGACCCGGTC GTCCTGGCAA TTCCGGTGTGTA CTCACCCGGTT  
CCGCAGACCA CTATGGCTCG TTGTCTGTGT ATCTGCTAAC -  
3'

Primer-3, used for the first series of PCR amplification of the ligated  
amplification sequence, SEQ ID NO. 26 (HCV A), and which has a length of 18  
25 nucleotides, is complementary to sequence comprising nucleotides 34 to 51 at the  
3' terminus of Amp-probe-2 (HCV A), and is, therefore, also complementary to the  
sequence comprising nucleotides 103 to 120 of the ligated amplification sequence,

SEQ ID NO. 26 (HCV A), and has the sequence (also listed below as SEQ ID NO. 27):

5' - GTTAGCAGAT ACACAGAC - 3'

Primer-4, used for the first series of PCR amplification of the ligated  
5 amplification sequence (HCV A), SEQ ID NO. 26, and which has a length of 18  
nucleotides, is complementary to the sequence comprising nucleotides 1-18 at the  
5' terminus of the Amp-probe-2A (HCV A), and is, therefore, also complementary  
to the sequence comprising nucleotides 1 to 18 of the ligated amplification  
sequence, SEQ ID NO. 26 (HCV A), and has the sequence (also listed below as  
10 SEQ ID NO. 28):

5' - CAAGAGCAAC TACACGAA - 3'

Primer-5, a DNA oligomer of 18 nucleotides is used for the second series of  
PCR amplification of the ligated amplification sequence (HCV A), SEQ ID NO.  
26, such that the primer is complementary to the sequence comprising nucleotides  
15 19-36 of the Amp-probe-2A (HCV A), and is, therefore, also hybridizable to the  
sequence comprising nucleotides 19-36 of the ligated amplification sequence  
SEQ ID NO. 26 (HCV A), and has the sequence (also listed below as SEQ ID NO.  
29):

5' - TTCTCGATTA GGTTACTG - 3'

20 The assay utilizing the above probes and primers was used to detect HCV  
RNA in 24 human serum samples that were stored at -70°C until use. For the  
assay, 180 µl serum sample was added to concentrated lysis buffer (prepared by  
condensing 250µl of the lysis solution containing 5M GnSCN, 0.5% bovine serum  
albumin, 80mM EDTA, 400mM Tris HCl (pH 7.5), and 0.5% Nonidet P-40 so that  
25 the mixture of serum and lysis buffer would have a final concentration of  
5M GnSCN) mixed well and incubated for 1 hour at 37°C to release the target  
RNA from HCV particles. 80µl of the lysis mixture was then transferred to 120µl  
of hybridization buffer [0.5% bovine serum albumin, 80mM EDTA, 400 mM Tris-

Hcl (pH 7.5), 0.5% Nonidet-P40] with  $10^{10}$  molecules each of amplification probes, Amp-probe-2 (HCV A) and Amp-probe-2A (HCV A) oligomers, and  $10^{11}$  molecules each of capture/amplification probes, Capture/Amp-probe-1 (HCV A) and Capture/Amp-probe-1A (HCV A). The addition of the hybridization buffer  
5 reduced the concentration of the guanidium isothiocyanate (GnSCN) from 5M to 2M to allow the hybridization to occur. The mixture was incubated at 37°C for 1 hour to let the various probes hybridize with the target RNA, whereupon 30  $\mu$ l of streptavidin-coated paramagnetic beads (Promega) were added to the hybridization mixture before incubation at 37° C for 20 minutes to allow ligand binding. Next,  
10 the beads were washed with 150 $\mu$ l of 2M GnSCN to eliminate any free probes, proteins, extraneous nucleic acids and potential PCR inhibitors from the hybridization mixture; this was followed by the removal of the GnSCN by washing twice with 150 $\mu$ l ligase buffer [66mM Tris-Hcl (pH 7.5) 1mM DTT, 1mM ATP, 0.5% Nonidet P-40 and 1mM MnCl<sub>2</sub>]. At each wash-step, the magnetic separation  
15 of the bound complex from the supernatant was effected by the magnetic field technique described in Example 1.

The amplification probes, Amp-probe-2 (HCV A) and Amp-probe-2A (HCV A), bound to target RNA were then covalently joined to create the ligated amplification sequence (HCV A) that was utilized as a template for PCR  
20 amplification. The hybrid complex was resuspended in 20 $\mu$ l ligase buffer with 5 units of T<sub>4</sub> DNA ligase (Boehringer) and incubated for 1 hour at 37°C for the ligation reaction. For the subsequent PCR reaction referred to hereafter as the "first PCR reaction", 10 $\mu$ l of the ligated mixture, including the beads, was added to 20 $\mu$ l of PCR mixture [0.06  $\mu$ M each of Primer-3 and Primer-4, 1.5 Units *Taq* DNA  
25 Polymerase, 0.2 mM each of dATP, dCTP, dGTP and dTTP, 1.5 mM MgCl<sub>2</sub>, 10mM Tris-HCl (pH 8.3) 50mM KCl] and the mixture incubated at 95°C for 30 seconds, 55°C for 30 seconds and 72°C for 1 minute, for 35 cycles. After the first PCR reaction, 5 $\mu$ l of the product was transferred to a second PCR mixture [same

components as the first PCR mixture except that Primer-4 was substituted with Primer-5] for "the second PCR reaction" (a semi-nested PCR approach to increase the sensitivity of the assay) carried out under the same conditions as the first PCR reaction. 10  $\mu$ l of the products of the second reaction were electrophoresed on a  
5 6% polyacrylamide gel, stained with ethidium bromide and visualized under ultraviolet light.

To establish the sensitivity and the specificity of the method, 10-fold serial dilutions of synthetic HCV RNA in HCV-negative serum were assayed according to the protocol described above, so that the concentration of HCV RNA ranged  
10 from  $10^1$  to  $10^7$  molecules/reaction. After ligation and amplification, the PCR products were separated by polyacrylamide gel electrophoresis, stained with ethidium bromide and visualized under ultra violet light. The results, shown in Fig. 8, clearly indicate the specificity of the method. In the absence of HCV RNA there is no signal, indicating that probes must capture the target RNA in order to  
15 generate a PCR product. As few as 100 molecules of HCV RNA/sample were detectable with the semi-nested PCR method (Fig. 8), indicating that the sensitivity of the method is at least comparable to that of conventional RT-PCR (Clementi et al., 1993, PCR 2: 191-196).

Further, relative amounts of the PCR product represented by the intensity  
20 of the bands as visualized in Fig. 8, were proportional to the quantity of the target RNA (HCV RNA transcripts). Therefore, the assay is quantitative over, at least, a range of  $10^2$  to  $10^5$  target molecules.

To determine the increased capture efficiency afforded by two capture probes,  $^{32}$ P-labelled target HCV RNA was assayed for capture and retention on  
25 paramagnetic beads using Capture/Amp-probe-1 (HCV A) or Capture/Amp-probe-1A (HCV A) or both. The capture was estimated by the amount of radioactivity retained on the paramagnetic beads after extensive washes with 2M-GnSCN buffer and the ligase buffer. Results showed that 25.7% of labelled HCV RNA was

retained on the beads when captured by Capture/Amp-probe-1 (HCV A) alone, 35.8% retained with Capture/Amp-probe-1A (HCV A) alone and 41.5% of the target RNA was retained when both the capture probes were used. Therefore the double-capture method was more efficient than the use of a single capture probe.

5

### EXAMPLE 6

#### USE OF MULTIPLE CAPTURE AND AMPLIFICATION PROBES TO DETECT HIV-1 RNA IN A SAMPLE.

10 An alternative approach to that set forth in Example 1 uses a capture/amplification probe and a pair of amplification probes to detect the presence of HIV-1 RNA. Capture/Amp-probe-1 (HIV), SEQ ID NO. 1 and a pair of amplification probes Amp-probe-2 (HIV A) (all oligomers described in this Example are designated "(HIV A)" to distinguish from the probes "(HIV)" of  
 15 Example 1) (SEQ ID NO. 19) and Amp-probe-2A (HIV A), (SEQ ID NO. 20), are utilized such that the generic nucleotide sequences of the ligated amplification sequence (HIV A) (SEQ ID NO. 21) comprising nucleotides 1-26 derived from nucleotides 1-26 of Amp-probe-2 (HIV A) and nucleotides 86-112 derived from nucleotides 40-65 of Amp-probe-2A (HIV A) are designed and synthesized to have  
 20 random sequences and a GC content of, at least, 60%, and such that they exhibit minimal secondary structure *e.g.* hairpin or foldback structures.

Amplification probe Amp-probe-2 (HIV A) is a 47 nucleotide DNA oligomer such that nucleotides 27 to 47 in the 3' region, are complementary to and hybridizable with sequences in the gag region of the target HIV-1 RNA, and that  
 25 the oligomer has the following nucleotide sequence (also listed below as SEQ ID NO. 19):

5' - GGTGAAATTG CTGCCATTGT CTGTATGTTG  
 TCTGTGTATC  
 TGCTAAC - 3'

Amplification probe Amp-probe-2A (HIV A) is a 65 nucleotide DNA oligomer such that nucleotides 1 to 39 in the 5' region, are complementary to and hybridizable with sequences in the gag region of the target HIV-1 RNA, immediately adjacent to the portion of the HIV-1 RNA genome hybridizable to  
 5 nucleotides 27-47 of the Amp-probe-2 (HIV A) and that the oligomer has the following nucleotide sequence (also listed below as SEQ ID NO. 20):

5' - CAAGAGCAAC TACACGAATT CTCGATTAGG  
 TTACTGCAGC

AACAGGCGGC CTTAACTGTA GTACT -3'

10 End to end ligation of the two amplification probes provides a 112 nucleotide ligated amplification sequence (HIV A) such that the sequence serves as a detectable sequence for HIV-1 RNA as well as a template for amplification reactions, and has the following sequence (also known as SEQ ID NO. 21)

5' - GGTGAAATTG CTGCCATTGT CTGTATGTTG  
 15 TCTGTGTATC

TGCTAACCAA GAGCAACTAC ACGAATTCTC  
 GATTAGGTTA CTGCAGCAAC AGGCGGCCTT  
 AACTGTAGTA CT -3'

Further, the capture, detection and optional amplification of the captured  
 20 ligation product in order to assay for HIV RNA is carried out as described in Example 5. The PCR primers used for amplification are the same primers- 3, 4 and 5 (SEQ ID NOS. 27, 28 and 29) of Example 5.

**EXAMPLE 7****USE OF SEPARATE CAPTURE/AMPLIFICATION  
PROBES AND A LIGATION INDEPENDENT, SINGLE  
AMPLIFICATION PROBE TO DETECT HCV RNA IN A SAMPLE.**

5

The assay employs a single ligation independent amplification probe and two capture/amplification probes to detect HCV RNA in a sample.

The capture/amplification probes Capture/Amp-probe-1 (HCV A) and Capture/Amp-probe-1A (HCV A) used in this method are the same as described in  
10 Example 5.

The amplification probe, Amp-probe-2 (HCV B) (all oligomers described in this Example are designated "(HCV B)" to distinguish from the probes "(HCV)" of Example 4), SEQ ID NO. 30, is a 100 nucleotide DNA molecule such that the sequence represented by nucleotides 39 to 79 in the central region of the oligomer  
15 is complementary to and hybridizable to a region in the 5' UTR of the HCV RNA (Fig. 6), and that the sequences spanning nucleotides 1-38 in the 5' terminus and by nucleotides 80-100 in the 3' terminus are designed and synthesized such that they have random sequences and a GC content of, at least, 60%, and such that they exhibit minimal secondary structure e.g. hairpin or foldback structures. Amp-  
20 probe-2 (HCV B), also referred to as amplification sequence, has the following sequence (also listed below as SEQ ID NO. 30):

5' - CAAGAGCAAC TACACGAATT CTCGATTAGG  
TTACTGCAGC  
GTCCTGGCAA TTCCGGTGTA CTCACCGGTT  
25 CCGCAGACCG  
TTGTCTGTGT ATCTGCTAAC -3'

The capture, detection and the optional amplification of the probe sequences was carried out as described in Example 5, except that primers -3 and -4, only, were utilized in a single PCR amplification step, the second PCR step was  
30 omitted, and that the ligation step was omitted.

**EXAMPLE 8****USE OF SEPARATE CAPTURE/AMPLIFICATION  
PROBES AND A SINGLE, AMPLIFIABLE, LIGATION  
DEPENDENT PROBE TO DETECT HCV RNA IN A SAMPLE.**

5

The method in this Example employs the two capture/amplification probes Capture/Amp-probe-1 (HCV A) and Capture/Amp-probe-1A (HCV A) described in Example 5 and a single amplification probe, Amp-probe-2 (HCV C) (all oligomers described in this Example are designated "(HCV C)" to distinguish from the probes "(HCV)" of Example 4) that hybridizes to the target nucleic acid and circularizes upon ligation of its free termini as shown in Fig. 7.

10

Amp-probe-2 (HCV C) is a 108 nucleotide amplification probe, also referred to as an amplification sequence, such that nucleotides 1-26 in the 5' terminus of the oligomer are complementary to and hybridizable to a sequence in the 5'UTR of the target HCV RNA (indicated by (a) in Fig. 7) and such that nucleotides 83-108 at the 3' terminus of the oligomer are complementary to and hybridizable to a sequence in the 5'UTR of the target HCV RNA (indicated by (b) in Fig. 7). Moreover, when the probe hybridizes with the target HCV RNA, the 3' and 5' termini of the probe are placed immediately adjacent to each other (Fig. 7), resulting in the formation of a closed circular molecule upon ligation with a linking agent, such as DNA ligase. The sequence of Amp-probe-2 (HCV C) is given as follows (also listed as SEQ ID NO. 31):

15

20

```

5' - CCTTTCGCGA  CCCAACACTA  CTCGGCTGTC
TGTGTATCTG
CTAACCAAGA  GCAACTACAC  GAATTCTCGA
TTAGGTTACT
GCGCACCTA  TCAGGCAGTA  CCACAAGG  -3'

```

25

Primer-3 (SEQ ID NO. 27), used for the first series of PCR amplification of the ligated and circularized Amp-probe-2 (HCV C), is an 18 nucleotide long



oligomer that is complementary to the sequence comprising nucleotides 27 to 45 of Amp-probe-2 (HCV C).

Primer-4 (SEQ ID NO. 28), also used for the first series of PCR amplification of the ligated and circularized Amp-probe-2, is a 18 nucleotide long  
5 oligomer that is complementary to the sequence comprising nucleotides 46 to 63 of Amp-probe-2 (HCV C).

The hybridization of the two capture/amplification probes and the amplification probe to target HCV RNA, circularization of the amplification probe upon ligation of its termini and amplification of the probe sequences was carried  
10 out as described in Example 5, except that primers -3 and -4, only, were utilized in a single PCR amplification step, the second PCR step was omitted, and that Amp-probe-2 (HCV C) (SEQ ID NO. 31) was substituted for the pair of amplification probes, Amp-probe-2 (HCV A) (SEQ ID NO. 24) and Amp-probe-2A (HCV A) (SEQ ID NO. 25) utilized in Example 5.

15 To establish the sensitivity and the specificity of the method, 10-fold serial dilutions of synthetic HCV RNA in HCV-negative serum were assayed according to the method to provide standard concentrations of HCV RNA ranging from  $10^3$  to  $10^7$  molecules/sample. After ligation and amplification, the PCR products were separated by polyacrylamide gel electrophoresis, stained with ethidium bromide  
20 and visualized under ultra-violet light.

The results, (Fig. 9, (-): control, no sample), indicate the specificity of the method. The assay is highly specific; in the absence of target HCV RNA there is no visible signal, indicating that probes must capture the target RNA in order to generate a PCR product. As seen in Fig. 9, as few as  $10^4$  molecules of HCV  
25 RNA/sample were clearly detectable.

Further, relative amounts of the PCR product, represented by the intensity of the bands (Fig. 9), were proportional to the quantity of the target RNA (HCV

RNA transcripts). Therefore, the assay is significantly quantitative at least over a range of  $10^4$  to  $10^7$  target molecules.

#### EXAMPLE 9

5                    DETECTION OF HCV TARGET SEQUENCES IN  
                      TISSUE SAMPLE USING LD-PCR ASSAY.

                      This example provides a comparison of the ligation-dependent PCR (LD-PCR) of the present invention with reverse transcriptase PCR (RT-PCR) for the  
10                    detection of HCV sequences in formalin fixed, paraffin embedded (FFPE) liver samples. Twenty-one archival liver specimens of hepatocellular carcinoma (HCCs) from patients who underwent liver resection or orthotopic liver transplantation between January, 1992 to March, 1995 at the Mount Sinai Medical Center, New York, NY were selected for this study. Thirteen of these patients  
15                    were anti-HCV positive and eight were negative as determined by a second generation enzyme-linked immunoassay (EIA II) (Abbott Diagnostic, Chicago, IL). An explanted liver tissue from an anti-HCV negative patient with cirrhosis secondary to biliary atresia was used as control. After surgery, the liver specimens were stored at 4°C and sectioned within twelve hours. The specimens were fixed  
20                    in 10% buffered formalin for eight to twelve hours and routinely embedded in paraffin. The FFPE specimens were stored at room temperature for a period of three months up to three years. In addition, snap frozen liver tissues from thirteen of the twenty-two patients, stored at -70°C, were used to resolve discordance between LD-PCR and RT-PCR results.

25                    FFPE specimens (approximately 2-4 cm<sup>2</sup>) were sectioned on a microtome with a disposable blade to 10 μm in thickness, and each section was placed in a 1.5-ml microcentrifuge tube. To avoid cross contamination, the blades were changed and the holder was cleaned with 10% Chlorox solution between each sample. The sections were deparaffinized by incubating at 60°C for 10 minutes in

the presence of 1 ml of xylene (Sigma). The xylene was removed by two washes with absolute ethanol. The specimens were then dried by vacuum centrifugation or by placing on a hot block at 65°C for 30 min.

For LD-PCR, the deparaffinized tissues were lysed by incubating at 100°C  
5 for 30 min in 250  $\mu$ l of lysis buffer containing 5 M guanidinium thiocyanate (GnSCN) (Fluka), 0.5% bovine serum albumin (Sigma), 80 mM EDTA, 400 mM Tris HCl (pH 7.5), and 0.5% sodium-N-lauroylsarcosine (Sigma) followed by incubating at 65°C for 30 min. The lysed specimens were stored at -20°C until use. The HCV serologic status of all specimens was blinded to laboratory  
10 personnel to avoid bias.

For RT-PCR, the deparaffinized tissues were lysed by incubating at 60°C for 5 hr in 200  $\mu$ l of lysis buffer containing 10 mM Tris-HCl (pH 8.0), 0.1 mM EDTA (pH 8.0), 2% sodium dodecyl sulfate and 500  $\mu$ g/ml proteinase K. RNA was purified by phenol and chloroform extractions followed by precipitation with  
15 an equal volume of isopropanol in the presence of 0.1 volume of 3 M sodium acetate. The RNA pellet was washed once in 70% ethanol, dried and resuspended in 30  $\mu$ l of sterile diethylpyrocarbonate-treated water. RNA was also extracted from sections (10 nm thickness) of frozen liver tissue obtained from the corresponding patients using the single step RNA extraction method described by  
20 Chomczynski et al. (1987) Anal. Biochem. 162: 156.

LD-PCR was performed as follows. Briefly, 80  $\mu$ l of lysis mixture were added to 120  $\mu$ l of hybridization buffer [0.5% bovine serum albumin, 80 mM EDTA, 400 mM Tris-HCl (pH 7.5), and 0.5% sodium-N-lauroylsarcosine], which contained  $10^{10}$  molecules of phosphorylated Amp-probe-2,  $10^{10}$  molecules of Amp-probe 2A and  $10^{11}$  molecules of capture Amp-probe 1 and capture Amp probe 1A.  
25 (Probes are as described in Example 5). Addition of the hybridization buffer reduced the GnSCN concentration from 5 M to 2 M to allow hybridization to occur. This mixture was incubated for one hour to allow the formation of hybrids,

consisting of two DNA capture probes and two DNA hemiprobes bound to their HCV RNA target. Thirty  $\mu\text{l}$  of streptavidin-coated paramagnetic beads (Promega) were added to the mixture and incubated at 37°C for 20 min to allow the hybrids to bind to the bead surface. The beads were then washed twice with 150  $\mu\text{l}$  of washing buffer [10 mM Tris-HCl (pH 7.5), 0.5% Nonidet P-40, and 1.5 mM MgCl<sub>2</sub>, and 50 mM KCl] to remove nonhybridized probes, as well as GnSCN, proteins, nucleic acids, and any potential PCR inhibitors. During each wash, the beads were drawn to the wall of the assay tube by placing the tube on a Magnetic Separation Stand (Promega), enabling the supernatant to be removed by aspiration.

5 The hybrids were then resuspended in 20  $\mu\text{l}$  ligase solution [66 mM Tris HCl (pH 7.5), 1 mM dithiothreitol, 1 mM ATP, 1 mM MnCl<sub>2</sub>, 5 mM MgCl<sub>2</sub>, and 5 units of T4 DNA ligase (Boehringer Mannheim)] and incubated at 37°C for one hour to covalently link the probes that are hybridized to adjacent positions on the RNA target, thus producing the ligated amplification probe described in Example 5.

10 Ten  $\mu\text{l}$  of the ligation reaction mixture (including beads) were then transferred to 20  $\mu\text{l}$  of a PCR mixture containing 0.66  $\mu\text{M}$  of PCR primer 3 and 0.66  $\mu\text{M}$  of PCR primer 4 as described in Example 5, 1.5 units of Taq DNA polymerase, 0.2 mM dATP, 0.2 mM dCTP, 0.2 mM dGTP, 0.2 mM dTTP, 1.5 mM MgCl<sub>2</sub>, 10 mM Tris-HCl (pH 8.3), and 50 mM KCl. The first PCR reaction was incubated at 90°C for

15 30 sec, 55°C for 30 sec and 72°C for 1 min for 35 cycles in a GeneAmp PCR System 9600 Thermocycler (Perkin-Elmer, Norwalk, CT). After the first PCR, 5  $\mu\text{l}$  of each reaction mixture were transferred into a 30- $\mu\text{l}$  second PCR mixture containing the same components except that 0.66  $\mu\text{M}$  of PCR primer 3 and 0.66  $\mu\text{M}$  of PCR primer 5 were used for semi-nested PCR. The second PCR reaction

20 was performed by the same protocol as the first PCR reaction. Ten  $\mu\text{l}$  of the second PCR reaction were analyzed by electrophoresis through a 6% polyacrylamide gel and visualized by ultraviolet fluorescence after staining with ethidium bromide. The presence of a 102 basepair band for the second PCR

25

product was considered as a positive result. All tests were duplicated and done blindly to the serological status (anti-HCV positive or negative) of the sample.

RT-PCR was performed according to the method of Abe et al. (1994)

International Hepatology Communication 2: 352. Briefly, 15  $\mu$ l of RNA

5 suspension of each specimen was used as template to detect HCV RNA and beta actin RNA. The beta actin RNA was used internal positive control for cellular RNA. The sequence of outer primers used for RT-PCR are, for HCV RNA, 5'-GCGACACTCCACCATAGAT-3' (sense) (SEQ ID NO : 32) and 5'-GCTCATGGTGCACGGTCTA-3' (antisense) (SEQ ID NO : 33) and for beta-actin  
10 RNA, 5'-CTTCTACAATGAGCTGCGTGTGGCT-3' (sense) (SEQ ID NO : 34) and 5'-CGCTCATTGCCAATGGTGATGACCT-3' (antisense) (SEQ ID NO : 35). The sequence of inner primers are, for HCV RNA, 5'-CTGTGAGGA<sup>o</sup>ACTACTGTCT-3' (sense) (SEQ ID NO : 36) and 5'-ACTCGCAAGCACCTATCA-3' (antisense) (SEQ ID NO : 37), and for beta-actin  
15 RNA, 5'-AAGGCCAACCGCGAGAAGAT-3' (sense) (SEQ ID NO : 38) and 5'-TCACGCACGATTTCCCGC-3' (antisense) (SEQ ID NO : 39). The first PCR reaction was combined with the reverse transcription step in the same tube containing 50  $\mu$ l of reaction buffer prepared as follows: 20 units of Rnase inhibitor (Promega), 100 units of Moloney murine leukemia virus reverse transcriptase  
20 (Gibco BRL), 100 ng of each outer primer, 200  $\mu$ M of each of the four deoxynucleotides, 1 unit of Taq DNA polymerase (Boehringer Mannheim) and 1X Taq buffer containing 1.5 mM MgCl<sub>2</sub>. The thermocycler was programmed to first incubate the samples for 50 min at 37°C for the initial reverse transcription step and then to carry out 35 cycles consisting of 94°C for 1 min, 55°C for 1 min, and  
25 72°C for 2 min. For the second PCR, 5  $\mu$ l of the first PCR product was added to a tube containing the second set of each inner primer, deoxynucleotides, Taq DNA polymerase and Taq buffer as in the first PCR reaction, but without reverse transcriptase and Rnase inhibitor. The second PCR reaction was performed with

the same protocol as the first PCR reaction but without the initial 50 min incubation at 37°C. Twenty µl of the PCR products were examined by electrophoresis through a 2% agarose gel. Positive results of HCV RNA and beta-actin RNA were indicated by the presence of second PCR products as a 268-  
 5 basepair and a 307-basepair band, respectively.

The results of LD-PCR and RT-PCR are set forth below in Table 2.

TABLE 2

10

Comparison of LD-PCR with RT-PCR

| HCV Serology (No) | FFPE <sup>a</sup>   |   |                     |   | Unfixed <sup>b</sup> |   |
|-------------------|---------------------|---|---------------------|---|----------------------|---|
|                   | LD-PCR <sup>c</sup> |   | RT-PCR <sup>d</sup> |   | RT-PCR <sup>e</sup>  |   |
|                   | +                   | - | +                   | - | +                    | - |
| Anti-HCV + (13)   | 13                  | 0 | 5                   | 8 | 7 <sup>f</sup>       | 0 |
| Anti-HCV - (9)    | 5                   | 4 | 0                   | 9 | 6 <sup>g</sup>       | 1 |

25

<sup>a</sup> FFPE--formalin fixed paraffin embedded liver tissues.

<sup>b</sup> Unfixed--snap frozen liver tissues of corresponding FFPE specimens.

30

<sup>c</sup> Number of FFPE specimens tested positive (+) or negative (-) by ligation-dependent PCR.

35

<sup>d</sup> Number of FFPE specimens tested positive (+) or negative (-) by reverse transcription PCR.

<sup>e</sup> Number of specimens confirmed by RT-PCR using unfixed frozen tissues.

40

<sup>f</sup> Only 7 unfixed specimens were available for confirmatory RT-PCR test.

<sup>g</sup> Only 7 unfixed specimens were available for confirmatory RT-PCR test.

Of the twenty-two FFPE specimens, thirteen were obtained from patients who were HCV positive by EIA assay and nine were HCV negative (Table 2). HCV RNA was detected in all thirteen seropositive FFPE specimens by LD-PCR, whereas only five were positive by RT-PCR. For confirmation, unfixed frozen liver specimens available from seven cases were tested by RT-PCR. Of these seven cases, HCV-RNA was detectable in all seven by LD-PCR when FFPE tissue of the same specimens were utilized, but in only one by RT-PCR. However, RT-PCR on the frozen tissue confirmed the presence of HCV-RNA in all cases. Beta actin mRNA was detected in all corresponding specimens, indicating minimal RNA degradation. These results confirmed the preservation of the HCV RNA during formalin-fixation, the heated paraffin embedding process, and up to three years of storage. The overall sensitivity of RT-PCR on FFPE specimens was 23.8% (5/21) in this study while it was determined 58.6% and 84% in prior studies by El-Batonony et al. (1994) *J. Med. Virol.* 43 : 380 and Abe et al. The gross difference in these values was due to the difference in the selection of specimens in these studies (eight RT-PCR negatives and five positives on FFPE tissues were selected for this study). Among the eight HCV sero-negative liver specimens, seven with HCC were removed from two patients with primary biliary cirrhosis (PBC), two with alcoholic cirrhosis, two with hepatitis B virus (HBV) liver cirrhosis, one with cryptogenic liver cirrhosis and one without HCC from a child with biliary atresia (Table 3). Among the seven HCC liver specimens, five tested positive for HCV by LD-PCR, but none by RT-PCR. The specimen with biliary atresia remained negative by both PCR tests. To resolve this discrepancy, RT-PCR was performed on the seven unfixed frozen tissue specimens. The results are set forth below in Table 3.

TABLE 3  
HCV RNA detected in HCV-seronegative cases

5

| Clinical                    | <u>FFPE<sup>b</sup></u>   |                           | <u>Unfixed<sup>c</sup></u> | Total confirmed |
|-----------------------------|---------------------------|---------------------------|----------------------------|-----------------|
| Diagnosis (No) <sup>a</sup> | <u>LD-PCR<sup>d</sup></u> | <u>RT-PCR<sup>d</sup></u> | <u>RT-PCR<sup>e</sup></u>  | Positive        |
| PBC (2)                     | 1                         | 0                         | 2                          | 2               |
| Alcoholic (2)               | 2                         | 0                         | 2                          | 2               |
| Biliary atresia (1)         | 0                         | 0                         | N/D                        | 0               |
| HBV (3)                     | 2                         | 0                         | 2 <sup>g</sup>             | 2               |
| Cryptogenic (1)             | 0                         | 0                         | 0                          | 0               |

25

- 30 <sup>a</sup> Liver specimens from patients with various clinical diagnosis: PBC--primary biliary cirrhosis, Alcoholic--alcoholic liver cirrhosis, HBV--positive for HBsAg, Cryptogenic--cryptogenic liver cirrhosis.
- <sup>b</sup> FFPE--formalin fixed paraffin embedded liver tissues.
- 35 <sup>c</sup> Unfixed--snap frozen, unfixed liver tissues of corresponding FFPE specimens.
- <sup>d</sup> Number of FFPE specimens tested positive for HCV RNA by LD-PCR or RT-PCR.
- 40 <sup>e</sup> Number of specimens confirmed by RT-PCR using unfixed frozen tissues.
- <sup>g</sup> Only 2 unfixed specimens were available for confirmatory RT-PCR test.
- 45 N/D: not done--no fresh frozen specimen available.



The RT-PCR results on unfixed tissue confirmed the LD-PCR results, indicating false negative results by serologic testing. In addition, one of the PBC specimens that tested negative by both LD-PCR and RT-PCR on FFPE specimens was positive by RT-PCR on an unfixed frozen specimen, indicating false negative results by both PCRs on the FFPE specimen. These results show that there is a high detection rate of HCV RNA in HCV seronegative HCC (6/8, 75%) (Table 3) and that the overall positive rate in both HCV seropositive and seronegative HCC specimens is 86% (18/21) (Table 2). Contamination was unlikely since the cutting of FFPE and unfixed specimens, and the PCR assays were performed in two separate laboratories. In addition, great precaution was taken in the specimen preparation and PCR testing with proper negative controls. The overall agreement between LD-PCR of FFPE specimens and RT-PCR on fresh frozen specimens is very high, and the sensitivity of LD-PCR is 95% (18/19).

The foregoing results suggest that crosslinks caused by formalin fixation disrupt chain elongation of the nascent DNA strand by reverse transcriptase, resulting in lower sensitivity of RT-PCR in FFPE tissue. In contrast, LD-PCR amplifies probe sequences, bypassing the step of primer extension along the cross-linked template. In addition, the amplification probes may only have a 30-nucleotide long complementary region, and therefore are more accessible to the non-crosslinked regions. LD-PCR can thus achieve a higher sensitivity in the detection of HCV RNA in FFPE specimens. The value of this sensitive assay is confirmed by the foregoing results, which evidence a high detection rate of HCV RNA even in seronegative specimens.

EXAMPLE 10PRIMER EXTENSION-DISPLACEMENT  
ON CIRCULAR AMPLIFICATION SEQUENCE.

5           This example demonstrates the ability of Klenow fragment of DNA polymerase to displace downstream strands and produce a polymer.

          A synthetic DNA target was detected by mixing  $10^{12}$  molecules of phosphorylated circularizable probe having SEQ ID NO:31 with  $10^{13}$  molecules of synthetic HCV DNA target in 10  $\mu$ l of 1X ligation buffer, heating at 65°C for two  
10       minutes, and cooling to room temperature for ten minutes. One  $\mu$ l of ligase was added to the mix and incubated at 37°C for one hour, followed by addition of  $10^{13}$  molecules of  $^{32}$ P-labeled Ext-primer having SEQ ID NO:27. The mixture was heated to 100°C for five minutes and then cooled to room temperature for twenty  
15       minutes. Forty  $\mu$ l of Klenow mix and dNTPs were added to the reaction and incubated at 37°C. Ten  $\mu$ l aliquots were removed at 0, 1, 2 and 3 hours and examined on an 8% polyacrylamide gel. The results are shown in Fig. 18. The left lanes depict results in the absence of ligase. The right lanes depict extension after ligation. Bands ranging from 105 to 600 bases can be visualized in the right lanes. The results demonstrate that Klenow is able to extend from the Ext-primer,  
20       displace the downstream strand, and generate polymers.

EXAMPLE 11

25       DETECTION OF EBV EARLY RNA (EBER-1) IN PAROTID  
PLEOMORPHIC ADENOMAS BY LIGATION DEPENDENT PCR.

          LD-PCR utilizing a circularized probe was performed to detect Epstein Barr virus early RNA (EBER-1) in salivary benign mixed tumors (BMT). Six specimens of BMT and adjacent parotid tissue, and three specimens of normal  
30       parotid tissue (two removed from cysts and one from a hyperplastic lymph node)

were snap frozen in embedding medium for frozen tissue specimens (OCT, Miles, Inc., Elkhart, In.) and liquid nitrogen, and stored at -70°C. The corresponding formalin fixed paraffin embedded (FFPE) blocks of tissue were obtained and studied in parallel to the fresh tissue. All tissue was sectioned on a microtome, the blade of which was cleaned with 10% Chlorox between cases to avoid cross contamination. Two to three sections of each specimen were placed in a 1.5 ml microcentrifuge tube. FFPE tissues were deparaffinized by incubating at 60°C for 10 minutes with 1 ml xylene (Sigma), which was subsequently removed by two washes with absolute ethanol. These specimens were dried by placing on a hot block at 65°C for 30 minutes. Deparaffinized tissue was lysed by incubation at 100°C for 30 minutes, then 65°C for 30 minutes in 250 µl of lysis buffer: 5M guanidium thiocyanate (GTC)(Fluka), 0.5% bovine serum albumin (Sigma), 80 mM EDTA, 400 mM Tris HCl (pH 7.5), and 0.5% sodium-N-lauroylsarcosine (Sigma). Fresh frozen tissue was lysed by incubation at 37°C for 60 minutes in the same lysis buffer. The lysed specimens were stored at -20°C until use.

Two capture/amplification probes designed to flank the region of EBER-1 were used to capture target RNA. The sequences for capture probe 1 (SED ID NO : 40) and capture/amplification probe 2 (SEQ ID NO : 41) are shown in Table 4. The circular amplification probe (SEQ ID NO : 42) was designed with 3' and 5' regions complementary to the chosen target sequence (Table 4). Interposed between these two regions is a noncomplementary linker sequence. This circular amplification probe circularized upon target hybridization in such a manner as to juxtapose the 5' and 3' ends. Seminested PCR was performed using primer pairs directed at this linker sequence, also shown in Table 4.

TABLE 4

Sequences of Capture Probes,  
Amplifiable Circular Target Probe,  
and PCR Primers

5

---

|    |   |                    |                       |
|----|---|--------------------|-----------------------|
| 10 | EBER-Cap/Amp-1  | 5'Biotin-          |                       |
|    | AAGAgTctctccctagcaaaacctctagggcagcgtaggtcctg-3'             |                    |                       |
|    |   |                    | (SEQ ID No. 40)       |
| 15 | EBER-Cap/Amp-2  | 5'Biotin           |                       |
|    | AAGAggatcaaaacatgCGGaccaccagctggtacttgaccgaag-3'            |                    |                       |
|    |   |                    | (SEQ ID No. 41)       |
| 20 | Circular Amp  |                    |                       |
|    | PROBE5'tcaccaccgggacttgtaccCGGacTGCTGTGTATCTGCTAACCAAGAGCAA |                    |                       |
|    | CTACACGAATTCTCGATTAGGTTACTGCGggaagacaaccacagacaccgttcc-3'   |                    |                       |
|    |   |                    | (SEQ ID No. 42)       |
| 25 | 1st PCR   |                    |                       |
|    | primer pairs:   | GTTAGCAGATACACAGAC | (sense SEQ ID NO.     |
|    | 27)   |                    |                       |
|    |   | CAAGAGCAACTACACGAA | (antisense SEQ ID NO. |
|    | 28)   |                    |                       |
| 30 | 2ND PCR   |                    |                       |
|    | primer pairs:   | GTTAGCAGATACACAGAC | (sense SEQ ID NO.     |
|    | 27)   |                    |                       |
|    |   | TTCTCGATTAGGTTACTG | (antisense SEQ ID NO. |
|    | 29)   |                    |                       |

---

35

(lower case - complementary to EBER-1, upper case - generically designed)

40

LD-PCR was performed as follows. Briefly, 80  $\mu$ l of lysis mixture were added to 120  $\mu$ l of hybridization buffer (0.5% bovine serum albumin, 80 mM EDTA, 400 mM Tris-HCl (pH 7.5), and 0.5% sodium-N-lauroylsarcosine (Sigma) which contained  $10^{10}$  molecules of phosphorylated

target probe, and  $10^{11}$  molecules of capture probe 1 and capture probe 2. Addition of the hybridization buffer reduced the GmSCN concentration from 5 M to 2 M to allow hybridization to occur. This mixture was incubated for  
5 one hour to allow the formation of hybrids, consisting of two DNA capture/amplification probes and one DNA circular amplification probe hybridized on the target RNA. Thirty  $\mu$ l of streptavidin-coated paramagnetic beads (Promega) were added to the mixture and incubated at 37°C for 20  
10 minutes to allow the hybrids to bond to the bead surface. The beads were washed twice with 150  $\mu$ l of washing buffer (10 mM Tris HCl (pH 7.5), 0.5% Nonidet P-40, and 1.5 mM MgCl<sub>2</sub> and 50 mM KCl) to remove nonhybridized probes as well as potential inhibitors of PCR (GTC, proteins) and  
15 potential sources of nonspecific PCR products (cellular nucleic acids). During each wash, the beads were drawn to the wall of the assay tube by placing the tube on a Magnetic Separation Stand (Promega), enabling the supernatant to be removed by aspiration. The 3' and 5'  
20 ends of the circular amplification probes hybridized directly adjacent to each other on the target RNA, were covalently linked, and hence circularized by incubation at 37°C for 1 hour with 20  $\mu$ l ligase solution (66 mM Tris HCl (pH 7.5), 1 mM dithiothreitol, 1 mM ATP, 1 mM MnCl<sub>2</sub> and 5 units of T4 DNA ligase (Boehringer)). Ten  $\mu$ l of  
25 the ligation reaction mixture, including paramagnetic beads, were transferred to 20  $\mu$ l of a PCR mixture containing 0.66  $\mu$ M of PCR primer, 0.5 units Taq DNA

polymerase, 0.2 mM dATP, 0.2 mM dCTP, 0.2 mM dGTP, 0.2 mM dTTP, 1.5 mM Mg<sub>2</sub>, and 10mM Tris-HCl (pH 8.3) and 50 mM KCl. The first PCR reaction was incubated at 94°C for 30 seconds, 55°C for 30 seconds, and 72°C for 1 minute for 35  
5 cycles in a GeneAmp PCR system 9600 thermocycler (Perkin Elmer, CT). After the first PCR, 5 ul of each reaction mixture were transferred into a 25 ul second PCR mixture containing the same components except that 0.66 μM of PCR primer 1 and 0.66 μM of PCR primer 3 were used for  
10 seminested PCR, which increases signal detection sensitivity without compromising amplification specificity. Extension of PCR primer along the covalently circularized probe results in the generation of a large multi-unit polymer (rolling circle polymerization). In fact,  
15 without digestion into monomeric units, the PCR polymer product cannot migrate into the polyacrylamide gel. Ten ul of the second PCR reaction were digested with restriction endonuclease EcoRI in the presence of 50mM NaCl, 100mM Tris-HCl (pH 7.5), 10 mM MgCl<sub>2</sub>, 0.025% Triton  
20 X-100, and analyzed by gel electrophoresis through a 6% polyacrylamide gel and visualized by ultraviolet fluorescence after staining with ethidium bromide. The presence of a 90 base-pair band (second PCR product) and a 108 base-pair product (1st PCR) are considered as a  
25 positive result. The results are summarized in Table 5.

TABLE 5

EBV early RNA (EBER-1) detected by LD-PCR

5

| Case | Parotid tissue<br>(frozen) | Pleomorphic Adenoma<br>(frozen) | FFPE     |
|------|----------------------------|---------------------------------|----------|
| 1    | positive                   | none                            | positive |
| 2    | negative                   | none                            | negative |
| 3    | negative                   | none                            | ND       |
| 4    | ND                         | positive                        | negative |
| 5    | positive                   | positive                        | negative |
| 6    | positive                   | positive                        | positive |
| 7    | positive                   | negative                        | negative |
| 8    | positive                   | positive                        | negative |
| 9    | positive                   | negative                        | negative |

35 Note - Case 1 and 2 were from parotid tissues removed for reasons other than pleomorphic adenoma.

Cases 3-8 contained pleomorphic adenoma.

40 FFPE - formalin fixed paraffin embedded tissue. Frozen-tissue snap frozen in liquid nitrogen.

ND - not done as tissue not available.

45 In sum, EBER-1 sequences were detected in six of eight parotid samples. Of the six pleomorphic adenomas studied, four were positive for EBER-1. Of the two cases in which EBER was not detected in the tumor, sequences were present within

surrounding parotid tissue. The detection of EBER-1 sequences within corresponding formalin-fixed paraffin embedded tissue was considerably less sensitive - only two of eight specimens were positive.

In summary, the present results with ligation dependent PCR utilizing a  
5 circular probe demonstrate the presence of EBV-related sequences within the majority of pleomorphic adenomas studied. The present method exhibits a markedly increased detection rate relative to standard PCR for the detection of EBV DNA as performed by Taira et al. (1992) J. of Otorhinolaryngol Soc. Jap. 95: 860. In the present method, the 3' and 5' ends of a circularizable probe hybridized to the target sequence, resulting  
10 in juxtaposition. The juxtaposed sequences were then ligated, resulting in a circularized covalently linked probe that was locked onto the target sequence and thus resistant to stringent washes. PCR on the circular probe produced a rolling circle polymer, which was digested into monomeric units and visualized on a gel. The use of ligation dependent PCR with a circular probe, followed by detection by  
15 amplification of the probe by the rolling circle model, resulted in tremendous sensitivity of target detection in fresh frozen tissue.

Various publications are cited herein, the contents of which are hereby incorporated by reference in their entireties.



## SEQUENCE LISTING

## (1) GENERAL INFORMATION:

- (i) APPLICANTS: Zhang, David Y., Brandwein, Margaret
- (ii) TITLE OF INVENTION: NUCLEIC ACID AMPLIFICATION METHOD:  
HYBRIDIZATION SIGNAL AMPLIFICATION METHOD (HSAM)
- (iii) NUMBER OF SEQUENCES: 42
- (iv) CORRESPONDENCE ADDRESS:
  - (A) ADDRESSEE: Brumbaugh, Graves, Donohue & Raymond
  - (B) STREET: 30 Rockefeller Plaza
  - (C) CITY: New York
  - (D) STATE: NY
  - (E) COUNTRY: USA
  - (F) ZIP: 10112-0228
- (v) COMPUTER READABLE FORM:
  - (A) MEDIUM TYPE: Floppy disk
  - (B) COMPUTER: IBM PC compatible
  - (C) OPERATING SYSTEM: PC-DOS/MS-DOS
  - (D) SOFTWARE: PatentIn Release #1.0, Version #1.25
- (vi) CURRENT APPLICATION DATA:
  - (A) APPLICATION NUMBER:
  - (B) FILING DATE:
  - (C) CLASSIFICATION:
- (viii) ATTORNEY/AGENT INFORMATION:
  - (A) NAME: MacLeod, Janet M.
  - (B) REGISTRATION NUMBER: 35,263
  - (C) REFERENCE/DOCKET NUMBER: 29545-A-PCT/USA-A
- (ix) TELECOMMUNICATION INFORMATION:
  - (A) TELEPHONE: 212-408-2597
  - (B) TELEFAX: 212-765-2519

## (2) INFORMATION FOR SEQ ID NO:1:

- (i) SEQUENCE CHARACTERISTICS:
  - (A) LENGTH: 59 base pairs
  - (B) TYPE: nucleic acid
  - (C) STRANDEDNESS: single
  - (D) TOPOLOGY: linear
- (ii) MOLECULE TYPE: DNA (genomic)

## (ix) FEATURE:

- (A) NAME/KEY: misc\_feature
- (B) LOCATION: 1..59

## (xi) SEQUENCE DESCRIPTION: SEQ ID NO:1:

CCATCTTCCT GCTAATTTTA AGACCTGGTA ACAGGATTC CCCGGAATT CAAGCTTGG 59

## (2) INFORMATION FOR SEQ ID NO:2:

## (i) SEQUENCE CHARACTERISTICS:

- (A) LENGTH: 92 base pairs
- (B) TYPE: nucleic acid
- (C) STRANDEDNESS: single
- (D) TOPOLOGY: linear

## (ii) MOLECULE TYPE: DNA (genomic)

## (ix) FEATURE:

- (A) NAME/KEY: misc\_feature
- (B) LOCATION: 1..92

## (xi) SEQUENCE DESCRIPTION: SEQ ID NO:2:

GGGTTGACCC GGCTAGATCC GGGTGTGTCC TCTCTAACTT TCGAGTAGAG AGGTGAGAAA 60

ACCCCGTTAT CTGTATGTAC TGTTTTTACT GG 92

## (2) INFORMATION FOR SEQ ID NO:3:

## (i) SEQUENCE CHARACTERISTICS:

- (A) LENGTH: 151 base pairs
- (B) TYPE: nucleic acid
- (C) STRANDEDNESS: single
- (D) TOPOLOGY: linear

## (ii) MOLECULE TYPE: DNA (genomic)

## (ix) FEATURE:

- (A) NAME/KEY: misc\_feature
- (B) LOCATION: 1..151

## (xi) SEQUENCE DESCRIPTION: SEQ ID NO:3:

GGGTTGACCC GGCTAGATCC GGGTGTGTCC TCTCTAACTT TCGAGTAGAG AGGTGAGAAA 60  
 ACCCCGTTAT CTGTATGTAC TGTTTTTACT GGCCATCTTC CTGCTAATTT TAAGACCTGG 120  
 TAACAGGATT TCCCCGGGAA TTCAAGCTTG G 151

## (2) INFORMATION FOR SEQ ID NO:4:

## (i) SEQUENCE CHARACTERISTICS:

- (A) LENGTH: 90 base pairs
- (B) TYPE: nucleic acid
- (C) STRANDEDNESS: single
- (D) TOPOLOGY: linear

(ii) MOLECULE TYPE: DNA (genomic)

## (ix) FEATURE:

- (A) NAME/KEY: misc\_feature
- (B) LOCATION: 1..90

(xi) SEQUENCE DESCRIPTION: SEQ ID NO:4:

GGGTTGACCC GGCTAGATCC GGGTGTGTCC TCTCTAACTT TCGAGTAGAG AGGTGAGAAA 60  
 ACCCCGTTAT CCTGGTAACA GGATTTCCCC 90

## (2) INFORMATION FOR SEQ ID NO:5:

## (i) SEQUENCE CHARACTERISTICS:

- (A) LENGTH: 21 base pairs
- (B) TYPE: nucleic acid
- (C) STRANDEDNESS: single
- (D) TOPOLOGY: linear

(ii) MOLECULE TYPE: DNA (genomic)

## (ix) FEATURE:

- (A) NAME/KEY: misc\_feature
- (B) LOCATION: 1..21

(xi) SEQUENCE DESCRIPTION: SEQ ID NO:5:

CAAGCTTGAA TTCCCCGGGA A 21

## (2) INFORMATION FOR SEQ ID NO:6:

- (i) SEQUENCE CHARACTERISTICS:
  - (A) LENGTH: 20 base pairs
  - (B) TYPE: nucleic acid
  - (C) STRANDEDNESS: single
  - (D) TOPOLOGY: linear

(ii) MOLECULE TYPE: DNA (genomic)

- (ix) FEATURE:
  - (A) NAME/KEY: misc\_feature
  - (B) LOCATION: 1..20

(xi) SEQUENCE DESCRIPTION: SEQ ID NO:6:

GGGTTGACCC GGCTAGATCC

20

(2) INFORMATION FOR SEQ ID NO:7:

- (i) SEQUENCE CHARACTERISTICS:
  - (A) LENGTH: 54 base pairs
  - (B) TYPE: nucleic acid
  - (C) STRANDEDNESS: single
  - (D) TOPOLOGY: linear

(ii) MOLECULE TYPE: DNA (genomic)

- (ix) FEATURE:
  - (A) NAME/KEY: misc\_feature
  - (B) LOCATION: 1..54

(xi) SEQUENCE DESCRIPTION: SEQ ID NO:7:

CAGGCTTATC CCGAAGTGCC TGGTAACAGG ATTTCCCCGG GAATTCAAGC TTGG

54

(2) INFORMATION FOR SEQ ID NO:8:

- (i) SEQUENCE CHARACTERISTICS:
  - (A) LENGTH: 91 base pairs
  - (B) TYPE: nucleic acid
  - (C) STRANDEDNESS: single
  - (D) TOPOLOGY: linear

(ii) MOLECULE TYPE: DNA (genomic)

(ix) FEATURE:

(A) NAME/KEY: misc\_feature  
 (B) LOCATION: 1..91

(xi) SEQUENCE DESCRIPTION: SEQ ID NO:8:

GGGTTGACCC GGCTAGATCC GGGTGTGTCC TCTCTAACTT TCGAGTAGAG AGGTGAGAAA 60  
 ACCCCGTTAT CCGGTATTAG ACCCAGTTTC C 91

(2) INFORMATION FOR SEQ ID NO:9:

(i) SEQUENCE CHARACTERISTICS:

(A) LENGTH: 145 base pairs  
 (B) TYPE: nucleic acid  
 (C) STRANDEDNESS: single  
 (D) TOPOLOGY: linear

(ii) MOLECULE TYPE: DNA (genomic)

(ix) FEATURE:

(A) NAME/KEY: misc\_feature  
 (B) LOCATION: 1..145

(xi) SEQUENCE DESCRIPTION: SEQ ID NO:9:

GGGTTGACCC GGCTAGATCC GGGTGTGTCC TCTCTAACTT TCGAGTAGAG AGGTGAGAAA 60  
 ACCCCGTTAT CCGGTATTAG ACCCAGTTTC CCAGGCTTAT CCCGAAGTGC CTGGTAACAG 120  
 GATTCCCCG GGAATTCAAG CTTGG 145

(2) INFORMATION FOR SEQ ID NO:10:

(i) SEQUENCE CHARACTERISTICS:

(A) LENGTH: 56 base pairs  
 (B) TYPE: nucleic acid  
 (C) STRANDEDNESS: single  
 (D) TOPOLOGY: linear

(ii) MOLECULE TYPE: DNA (genomic)

(ix) FEATURE:

(A) NAME/KEY: misc\_feature  
 (B) LOCATION: 1..56

(xi) SEQUENCE DESCRIPTION: SEQ ID NO:10:

GAAGACATGC ATCCCGTGGT CCTGGTAACA GGATTTC CCC GGAATTCAA GCTTGG 56

(2) INFORMATION FOR SEQ ID NO:11:

(i) SEQUENCE CHARACTERISTICS:

- (A) LENGTH: 90 base pairs
- (B) TYPE: nucleic acid
- (C) STRANDEDNESS: single
- (D) TOPOLOGY: linear

(ii) MOLECULE TYPE: DNA (genomic)

(ix) FEATURE:

- (A) NAME/KEY: misc\_feature
- (B) LOCATION: 1..90

(xi) SEQUENCE DESCRIPTION: SEQ ID NO:11:

GGGTTGACCC GGCTAGATCC GGGTGTGTCC TCTCTAACTT TCGAGTAGAG AGGTGAGAAA 60

ACCCCGTTAT CGCTAAAGCG CTTTCCACCA 90

(2) INFORMATION FOR SEQ ID NO:12:

(i) SEQUENCE CHARACTERISTICS:

- (A) LENGTH: 146 base pairs
- (B) TYPE: nucleic acid
- (C) STRANDEDNESS: single
- (D) TOPOLOGY: linear

(ii) MOLECULE TYPE: DNA (genomic)

(ix) FEATURE:

- (A) NAME/KEY: misc\_feature
- (B) LOCATION: 1..146

(xi) SEQUENCE DESCRIPTION: SEQ ID NO:12:

GGGTTGACCC GGCTAGATCC GGGTGTGTCC TCTCTAACTT TCGAGTAGAG AGGTGAGAAA 60

ACCCCGTTAT CGCTAAAGCG CTTTCCACCA GAAGACATGC ATCCCGTGGT CCTGGTAACA 120

GGATTTC CCC GGAATTCAA GCTTGG 146

## (2) INFORMATION FOR SEQ ID NO:13:

## (i) SEQUENCE CHARACTERISTICS:

- (A) LENGTH: 56 base pairs
- (B) TYPE: nucleic acid
- (C) STRANDEDNESS: single
- (D) TOPOLOGY: linear

(ii) MOLECULE TYPE: DNA (genomic)

## (ix) FEATURE:

- (A) NAME/KEY: misc\_feature
- (B) LOCATION: 1..56

(xi) SEQUENCE DESCRIPTION: SEQ ID NO:13:

AAAGACATGC ATCCCGTGGT CCTGGTAACA GGATTTCCCC GGAATTCAA GCTTGG 56

## (2) INFORMATION FOR SEQ ID NO:14:

## (i) SEQUENCE CHARACTERISTICS:

- (A) LENGTH: 90 base pairs
- (B) TYPE: nucleic acid
- (C) STRANDEDNESS: single
- (D) TOPOLOGY: linear

(ii) MOLECULE TYPE: DNA (genomic)

## (ix) FEATURE:

- (A) NAME/KEY: misc\_feature
- (B) LOCATION: 1..90

(xi) SEQUENCE DESCRIPTION: SEQ ID NO:14:

GGGTTGACCC GGCTAGATCC GGGTGTGTCC TCTCTAACTT TCGAGTAGAG AGGTGAGAAA 60

ACCCCGTTAT CGCTAAAGCG CTTCCACCT 90

## (2) INFORMATION FOR SEQ ID NO:15:

## (i) SEQUENCE CHARACTERISTICS:

- (A) LENGTH: 146 base pairs
- (B) TYPE: nucleic acid
- (C) STRANDEDNESS: single
- (D) TOPOLOGY: linear

(ii) MOLECULE TYPE: DNA (genomic)

(ix) FEATURE:

- (A) NAME/KEY: misc\_feature
- (B) LOCATION: 1..146

(xi) SEQUENCE DESCRIPTION: SEQ ID NO:15:

```
GGGTTGACCC GGCTAGATCC GGGTGTGTCC TCTCTAACTT TCGAGTAGAG AGGTGAGAAA      60
ACCCCGTTAT CGCTAAAGCG CTTTCCACCT AAAGACATGC ATCCCGTGGT CCTGGTAACA      120
GGATTTCCCC GGAATTCAA GCTTGG                                             146
```

(2) INFORMATION FOR SEQ ID NO:16:

(i) SEQUENCE CHARACTERISTICS:

- (A) LENGTH: 55 base pairs
- (B) TYPE: nucleic acid
- (C) STRANDEDNESS: single
- (D) TOPOLOGY: linear

(ii) MOLECULE TYPE: DNA (genomic)

(ix) FEATURE:

- (A) NAME/KEY: misc\_feature
- (B) LOCATION: 1..55

(xi) SEQUENCE DESCRIPTION: SEQ ID NO:16:

```
GCAGACCACT ATGGCTCTCC CTGGTAACAG GATTTCCCCG GGAATTCAAG CTTGG          55
```

(2) INFORMATION FOR SEQ ID NO:17:

(i) SEQUENCE CHARACTERISTICS:

- (A) LENGTH: 90 base pairs
- (B) TYPE: nucleic acid
- (C) STRANDEDNESS: single
- (D) TOPOLOGY: linear

(ii) MOLECULE TYPE: DNA (genomic)

(ix) FEATURE:

- (A) NAME/KEY: misc\_feature
- (B) LOCATION: 1..90



## (xi) SEQUENCE DESCRIPTION: SEQ ID NO:17:

GGGTTGACCC GGCTAGATCC GGGTGTGTCC TCTCTAACTT TCGAGTAGAG AGGTGAGAAA 60

ACCCCGTTAT CCGGTGTACT CACCGGTTCC 90

## (2) INFORMATION FOR SEQ ID NO:18:

## (i) SEQUENCE CHARACTERISTICS:

(A) LENGTH: 145 base pairs

(B) TYPE: nucleic acid

(C) STRANDEDNESS: single

(D) TOPOLOGY: linear

## (ii) MOLECULE TYPE: DNA (genomic)

## (ix) FEATURE:

(A) NAME/KEY: misc\_feature

(B) LOCATION: 1..145

## (xi) SEQUENCE DESCRIPTION: SEQ ID NO:18:

GGGTTGACCC GGCTAGATCC GGGTGTGTCC TCTCTAACTT TCGAGTAGAG AGGTGAGAAA 60

ACCCCGTTAT CCGGTGTACT CACCGGTTCC GCAGACCACT ATGGCTCTCC CTGGTAACAG 120

GATTTCCCCG GGAATTCAAG CTTGG 145

## (2) INFORMATION FOR SEQ ID NO:19:

## (i) SEQUENCE CHARACTERISTICS:

(A) LENGTH: 47 base pairs

(B) TYPE: nucleic acid

(C) STRANDEDNESS: single

(D) TOPOLOGY: linear

## (ii) MOLECULE TYPE: DNA (genomic)

## (ix) FEATURE:

(A) NAME/KEY: misc\_feature

(B) LOCATION: 1..47

## (xi) SEQUENCE DESCRIPTION: SEQ ID NO:19:

GGTGAAATTG CTGCCATTGT CTGTATGTTG TCTGTGTATC TGCTAAC 47

## (2) INFORMATION FOR SEQ ID NO:20:

- (i) SEQUENCE CHARACTERISTICS:
  - (A) LENGTH: 65 base pairs
  - (B) TYPE: nucleic acid
  - (C) STRANDEDNESS: single
  - (D) TOPOLOGY: linear

(ii) MOLECULE TYPE: DNA (genomic)

- (ix) FEATURE:
  - (A) NAME/KEY: misc\_feature
  - (B) LOCATION: 1..65

(xi) SEQUENCE DESCRIPTION: SEQ ID NO:20:

CAAGAGCAAC TACACGAATT CTCGATTAGG TTA CTGCAGC AACAGGCGGC CTTAACTGTA 60  
 GTACT 65

## (2) INFORMATION FOR SEQ ID NO:21:

- (i) SEQUENCE CHARACTERISTICS:
  - (A) LENGTH: 112 base pairs
  - (B) TYPE: nucleic acid
  - (C) STRANDEDNESS: single
  - (D) TOPOLOGY: linear

(ii) MOLECULE TYPE: DNA (genomic)

- (ix) FEATURE:
  - (A) NAME/KEY: misc\_feature
  - (B) LOCATION: 1..112

(xi) SEQUENCE DESCRIPTION: SEQ ID NO:21:

GGTGAAATTG CTGCCATTGT CTGTATGTTG TCTGTGTATC TGCTAACCAA GAGCAACTAC 60  
 ACGAATTCTC GATTAGGTTA CTGCAGCAAC AGGCGGCCTT AACTGTAGTA CT 112

## (2) INFORMATION FOR SEQ ID NO:22:

- (i) SEQUENCE CHARACTERISTICS:
  - (A) LENGTH: 45 base pairs
  - (B) TYPE: nucleic acid
  - (C) STRANDEDNESS: single
  - (D) TOPOLOGY: linear

(ii) MOLECULE TYPE: DNA (genomic)

## (ix) FEATURE:

- (A) NAME/KEY: misc\_feature
- (B) LOCATION: 1..45

(xi) SEQUENCE DESCRIPTION: SEQ ID NO:22:

AAGAGCGTGA AGACAGTAGT TCCTCACAGG GGAGTGATTC ATGGT

45

## (2) INFORMATION FOR SEQ ID NO:23:

- (i) SEQUENCE CHARACTERISTICS:
  - (A) LENGTH: 45 base pairs
  - (B) TYPE: nucleic acid
  - (C) STRANDEDNESS: single
  - (D) TOPOLOGY: linear

(ii) MOLECULE TYPE: DNA (genomic)

## (ix) FEATURE:

- (A) NAME/KEY: misc\_feature
- (B) LOCATION: 1..45

(xi) SEQUENCE DESCRIPTION: SEQ ID NO:23:

AAGACCCAAC ACTACTCGGC TAGCAGTCTT GCGGGGGCAC GCCCA

45

## (2) INFORMATION FOR SEQ ID NO:24:

- (i) SEQUENCE CHARACTERISTICS:
  - (A) LENGTH: 51 base pairs
  - (B) TYPE: nucleic acid
  - (C) STRANDEDNESS: single
  - (D) TOPOLOGY: linear

(ii) MOLECULE TYPE: DNA (genomic)

## (ix) FEATURE:

(A) NAME/KEY: misc\_feature

(B) LOCATION: 1..51

## (xi) SEQUENCE DESCRIPTION: SEQ ID NO:24:

ACTCACCGGT TCCGAGACC ACTATGGCTC GTTGTCTGTG TATCTGCTAA C

51

## (2) INFORMATION FOR SEQ ID NO:25:

## (i) SEQUENCE CHARACTERISTICS:

(A) LENGTH: 69 base pairs

(B) TYPE: nucleic acid

(C) STRANDEDNESS: single

(D) TOPOLOGY: linear

## (ii) MOLECULE TYPE: DNA (genomic)

## (ix) FEATURE:

(A) NAME/KEY: misc\_feature

(B) LOCATION: 1..69

## (xi) SEQUENCE DESCRIPTION: SEQ ID NO:25:

CAAGAGCAAC TACACGAATT CTCGATTAGG TTAGTGCAGA GGACCCGGTC GTCCTGGCAA

60

TTCCGGTGT

69

## (2) INFORMATION FOR SEQ ID NO:26:

## (i) SEQUENCE CHARACTERISTICS:

(A) LENGTH: 120 base pairs

(B) TYPE: nucleic acid

(C) STRANDEDNESS: single

(D) TOPOLOGY: linear

## (ii) MOLECULE TYPE: DNA (genomic)

## (ix) FEATURE:

(A) NAME/KEY: misc\_feature

(B) LOCATION: 1..120

## (xi) SEQUENCE DESCRIPTION: SEQ ID NO:26:

CAAGAGCAAC TACACGAATT CTCGATTAGG TTACTGCAGA GGACCCGGTC GTCCTGGCAA 60  
TTCCGGTGTA CTCACCGGTT CCGCAGACCA CTATGGCTCG TTGTCTGTGT ATCTGCTAAC 120

(2) INFORMATION FOR SEQ ID NO:27:

- (i) SEQUENCE CHARACTERISTICS:  
(A) LENGTH: 18 base pairs  
(B) TYPE: nucleic acid  
(C) STRANDEDNESS: single  
(D) TOPOLOGY: linear

(ii) MOLECULE TYPE: DNA (genomic)

- (ix) FEATURE:  
(A) NAME/KEY: misc\_feature  
(B) LOCATION: 1..18

(xi) SEQUENCE DESCRIPTION: SEQ ID NO:27:

GTTAGCAGAT ACACAGAC 18

(2) INFORMATION FOR SEQ ID NO:28:

- (i) SEQUENCE CHARACTERISTICS:  
(A) LENGTH: 18 base pairs  
(B) TYPE: nucleic acid  
(C) STRANDEDNESS: single  
(D) TOPOLOGY: linear

(ii) MOLECULE TYPE: DNA (genomic)

- (ix) FEATURE:  
(A) NAME/KEY: misc\_feature  
(B) LOCATION: 1..18

(xi) SEQUENCE DESCRIPTION: SEQ ID NO:28:

CAAGAGCAAC TACACGAA 18

(2) INFORMATION FOR SEQ ID NO:29:

- (i) SEQUENCE CHARACTERISTICS:  
(A) LENGTH: 18 base pairs  
(B) TYPE: nucleic acid

(C) STRANDEDNESS: single  
 (D) TOPOLOGY: linear

(ii) MOLECULE TYPE: DNA (genomic)

(ix) FEATURE:  
 (A) NAME/KEY: misc\_feature  
 (B) LOCATION: 1..18

(xi) SEQUENCE DESCRIPTION: SEQ ID NO:29:

TTCTCGATTA GGTACTG

18

(2) INFORMATION FOR SEQ ID NO:30:

(i) SEQUENCE CHARACTERISTICS:  
 (A) LENGTH: 100 base pairs  
 (B) TYPE: nucleic acid  
 (C) STRANDEDNESS: single  
 (D) TOPOLOGY: linear

(ii) MOLECULE TYPE: DNA (genomic)

(ix) FEATURE:  
 (A) NAME/KEY: misc\_feature  
 (B) LOCATION: 1..100

(xi) SEQUENCE DESCRIPTION: SEQ ID NO:30:

CAAGAGCAAC TACACGAATT CTCGATTAGG TTA CTGCAGC GTCCTGGCAA TTCCGGTGTA

60

CTCACC GGTT CCGCAGACCG TTGTCTGTGT ATCTGCTAAC

100

(2) INFORMATION FOR SEQ ID NO:31:

(i) SEQUENCE CHARACTERISTICS:  
 (A) LENGTH: 108 base pairs  
 (B) TYPE: nucleic acid  
 (C) STRANDEDNESS: single  
 (D) TOPOLOGY: linear

(ii) MOLECULE TYPE: DNA (genomic)

(ix) FEATURE:

- (A) NAME/KEY: misc\_feature
- (B) LOCATION: 1..108

## (xi) SEQUENCE DESCRIPTION: SEQ ID NO:31:

CCTTTCGCGA CCAACACTA CTCGGCTGTC TGTGTATCTG CTAACCAAGA GCAACTACAC 60  
 GAATTCTCGA TTAGTTACT GCGCACCTA TCAGGCAGTA CCACAAGG 108

## (2) INFORMATION FOR SEQ ID NO:32:

- (i) SEQUENCE CHARACTERISTICS:
  - (A) LENGTH: 19 base pairs
  - (B) TYPE: nucleic acid
  - (C) STRANDEDNESS: single
  - (D) TOPOLOGY: linear

- (ii) MOLECULE TYPE: cDNA
- (iii) HYPOTHETICAL: NO
- (iv) ANTISENSE: NO
- (v) FRAGMENT TYPE:
- (vi) ORIGINAL SOURCE:

## (xi) SEQUENCE DESCRIPTION: SEQ ID NO:32:

GCGACTCC ACCATAGAT 19

## (2) INFORMATION FOR SEQ ID NO:33:

- (i) SEQUENCE CHARACTERISTICS:
  - (A) LENGTH: 19 base pairs
  - (B) TYPE: nucleic acid
  - (C) STRANDEDNESS: single
  - (D) TOPOLOGY: linear

- (ii) MOLECULE TYPE: cDNA
- (iii) HYPOTHETICAL: NO
- (iv) ANTISENSE: NO
- (v) FRAGMENT TYPE:
- (vi) ORIGINAL SOURCE:

## (xi) SEQUENCE DESCRIPTION: SEQ ID NO:33:

GCTCATGGTG CACGGTCTA 19

## (2) INFORMATION FOR SEQ ID NO:34:

- (i) SEQUENCE CHARACTERISTICS:

- (A) LENGTH: 25 base pairs
- (B) TYPE: nucleic acid
- (C) STRANDEDNESS: single
- (D) TOPOLOGY: linear

- (ii) MOLECULE TYPE: cDNA
- (iii) HYPOTHETICAL: NO
- (iv) ANTISENSE: NO
- (v) FRAGMENT TYPE:
- (vi) ORIGINAL SOURCE:

(xi) SEQUENCE DESCRIPTION: SEQ ID NO:34:

CTTCTACAAT GAGCTGCGTG TGGCT

25

(2) INFORMATION FOR SEQ ID NO:35:

- (i) SEQUENCE CHARACTERISTICS:
  - (A) LENGTH: 25 base pairs
  - (B) TYPE: nucleic acid
  - (C) STRANDEDNESS: single
  - (D) TOPOLOGY: linear

- (ii) MOLECULE TYPE: cDNA
- (iii) HYPOTHETICAL: NO
- (iv) ANTISENSE: NO
- (v) FRAGMENT TYPE:
- (vi) ORIGINAL SOURCE:

(xi) SEQUENCE DESCRIPTION: SEQ ID NO:35:

CGCTCATTGC CAATGGTGAT GACCT

25

(2) INFORMATION FOR SEQ ID NO:36:

- (i) SEQUENCE CHARACTERISTICS:
  - (A) LENGTH: 19 base pairs
  - (B) TYPE: nucleic acid
  - (C) STRANDEDNESS: single
  - (D) TOPOLOGY: linear

- (ii) MOLECULE TYPE: cDNA
- (iii) HYPOTHETICAL: NO
- (iv) ANTISENSE: NO
- (v) FRAGMENT TYPE:
- (vi) ORIGINAL SOURCE:

(xi) SEQUENCE DESCRIPTION: SEQ ID NO:36:



CTGTGAGGAA CTACTGTCT

19

(2) INFORMATION FOR SEQ ID NO:37:

- (i) SEQUENCE CHARACTERISTICS:
  - (A) LENGTH: 19 base pairs
  - (B) TYPE: nucleic acid
  - (C) STRANDEDNESS: single
  - (D) TOPOLOGY: linear

- (ii) MOLECULE TYPE: cDNA
- (iii) HYPOTHETICAL: NO
- (iv) ANTISENSE: NO
- (v) FRAGMENT TYPE:
- (vi) ORIGINAL SOURCE:

(xi) SEQUENCE DESCRIPTION: SEQ ID NO:37:

ACTCGCAAGC ACCCTATCA

19

(2) INFORMATION FOR SEQ ID NO:38:

- (i) SEQUENCE CHARACTERISTICS:
  - (A) LENGTH: 20 base pairs
  - (B) TYPE: nucleic acid
  - (C) STRANDEDNESS: single
  - (D) TOPOLOGY: linear

- (ii) MOLECULE TYPE: cDNA
- (iii) HYPOTHETICAL: NO
- (iv) ANTISENSE: NO
- (v) FRAGMENT TYPE:
- (vi) ORIGINAL SOURCE:

(xi) SEQUENCE DESCRIPTION: SEQ ID NO:38:

AAGCCAACC GCGAGAAGAT

20

(2) INFORMATION FOR SEQ ID NO:39:

- (i) SEQUENCE CHARACTERISTICS:
  - (A) LENGTH: 18 base pairs
  - (B) TYPE: nucleic acid
  - (C) STRANDEDNESS: single
  - (D) TOPOLOGY: linear

- (ii) MOLECULE TYPE: cDNA
- (iii) HYPOTHETICAL: NO
- (iv) ANTISENSE: NO

- (v) FRAGMENT TYPE:
- (vi) ORIGINAL SOURCE:

(xi) SEQUENCE DESCRIPTION: SEQ ID NO:39:

TCACGCACGA TTTCCCGC

18

(2) INFORMATION FOR SEQ ID NO:40:

- (i) SEQUENCE CHARACTERISTICS:
  - (A) LENGTH: 45 base pairs
  - (B) TYPE: nucleic acid
  - (C) STRANDEDNESS: single
  - (D) TOPOLOGY: linear
- (ii) MOLECULE TYPE: cDNA
- (iii) HYPOTHETICAL: NO
- (iv) ANTISENSE: NO
- (v) FRAGMENT TYPE:
- (vi) ORIGINAL SOURCE:

(xi) SEQUENCE DESCRIPTION: SEQ ID NO:40:

AAGAGTCTCC TCCCTAGCAA AACCTCTAGG GCAGCGTAGG TCCTG

45

(2) INFORMATION FOR SEQ ID NO:41:

- (i) SEQUENCE CHARACTERISTICS:
  - (A) LENGTH: 45 base pairs
  - (B) TYPE: nucleic acid
  - (C) STRANDEDNESS: single
  - (D) TOPOLOGY: linear
- (ii) MOLECULE TYPE: cDNA
- (iii) HYPOTHETICAL: NO
- (iv) ANTISENSE: NO
- (v) FRAGMENT TYPE:
- (vi) ORIGINAL SOURCE:

(xi) SEQUENCE DESCRIPTION: SEQ ID NO:41:

AAGAGGATCA AAACATGCCG ACCACCAGCT GGTACTTGAC CGAAG

45

(2) INFORMATION FOR SEQ ID NO:42:

- (i) SEQUENCE CHARACTERISTICS:
  - (A) LENGTH: 109 base pairs
  - (B) TYPE: nucleic acid
  - (C) STRANDEDNESS: single

(D) TOPOLOGY: linear

(ii) MOLECULE TYPE: cDNA  
(iii) HYPOTHETICAL: NO  
(iv) ANTISENSE: NO  
(v) FRAGMENT TYPE:  
(vi) ORIGINAL SOURCE:

(xi) SEQUENCE DESCRIPTION: SEQ ID NO:42:

```
TCACCACCCG GGACTTGTAC CCGGGACTGT CTGTGTATCT GCTAACCAAG AGCAACTACA      60
CGAATTCTCG ATTAGGTTAC TGCGGGAAGA CAACCACAGA CACCGTTCC                    109
```

I/WE CLAIM:

- 1 1. A method for detecting a target nucleic acid in a sample comprising:
- 2 (a) contacting said nucleic acid in said sample in a reaction vessel under
- 3 conditions that allow nucleic acid hybridization between
- 4 complementary sequences in nucleic acids with a first
- 5 capture/amplification probe and a second amplification probe in the
- 6 presence of paramagnetic particles coated with a first ligand binding
- 7 moiety, said first capture/amplification probe containing a first ligand
- 8 at the 3' end thereof, said first ligand being able to bind to and form an
- 9 affinity pair with the first ligand binding moiety coated onto the
- 10 paramagnetic particles, and comprising a 3' nucleotide sequence that is
- 11 neither complementary nor hybridizable to a nucleotide sequence in the
- 12 target nucleic acid, and a 5' nucleotide sequence that is complementary
- 13 and hybridizable to a nucleotide sequence in the target nucleic acid,
- 14 and said second amplification probe comprising a 3' nucleotide
- 15 sequence that is complementary and hybridizable to a nucleotide
- 16 sequence in the target nucleic acid, and a 5' nucleotide sequence that is
- 17 neither complementary nor hybridizable to a nucleotide sequence in the
- 18 target nucleic acid, wherein said 5' sequence is internally labeled with
- 19 a second ligand, such that a complex is formed comprising the target
- 20 nucleic acid, first and second probes and paramagnetic particles,
- 21 wherein the first and second probes are hybridized to the
- 22 complementary nucleotide sequences in the target nucleic acid and the
- 23 first probe is bound to the paramagnetic particles through the binding
- 24 of the first ligand on the first probe to the ligand binding moiety on the
- 25 paramagnetic particles;

- 26 (b) separating the complex from unbound reactants and washing the  
27 complex;
- 28 (c) ligating the first and second probes with a ligating agent that joins  
29 nucleotide sequences such that a contiguous ligated amplification  
30 sequence is formed;
- 31 (d) adding a second ligand binding moiety capable of binding to and  
32 forming an affinity pair with said second ligand, and a signal probe  
33 internally labeled with said second ligand to form a labeled complex;
- 34 (e) washing said complex to remove unbound signal probe and ligand  
35 binding moieties; and
- 36 (f) detecting said labeled complex, wherein the detection thereof indicates  
37 the presence of the target nucleic acid in the clinical sample.

- 1 2. A method for detecting a target nucleic acid in a sample comprising:
- 2 (a) contacting said nucleic acid in said sample in a reaction vessel under  
3 conditions that allow nucleic acid hybridization between  
4 complementary sequences in nucleic acids with oligonucleotide probes  
5 in the presence of paramagnetic particles coated with a first ligand  
6 binding moiety, said oligonucleotide probes comprising one or more  
7 capture/amplification probes, each having a 3' nucleotide sequence that  
8 is neither complementary nor hybridizable to a nucleotide sequence in  
9 the target nucleic acid, and a 5' nucleotide sequence that is  
10 complementary and hybridizable to a nucleotide sequence in the target  
11 nucleic acid, or a 5' nucleotide sequence that is neither complementary  
12 nor hybridizable to a nucleotide sequence in the target nucleic acid, and  
13 a 3' nucleotide sequence that is complementary and hybridizable to a  
14 nucleotide sequence in the target nucleic acid, each

- 15 capture/amplification probe further having a first ligand bound to the  
16 non-complementary sequence of the probe, wherein said first ligand is  
17 capable of binding to and forming an affinity pair with said first ligand  
18 binding moiety coated onto said paramagnetic particles; said  
19 oligonucleotide probes further comprising a circularizable signal probe  
20 having 3' and 5' regions that are complementary to adjacent but  
21 noncontiguous sequences in the target nucleic acid, said 3' and 5'  
22 regions separated by a linker region that is neither complementary nor  
23 hybridizable to a nucleotide sequence in the target nucleic acid wherein  
24 said linker region is labeled with a second ligand, such that a complex  
25 is formed comprising the target nucleic acid, circularizable probe,  
26 capture/amplification probes and paramagnetic particles, wherein the  
27 capture/amplification probes are hybridized to the complementary  
28 nucleotide sequences in the target nucleic acid and are bound to the  
29 paramagnetic particles through the binding of the first ligand on the  
30 capture/amplification probe to the first ligand binding moiety on the  
31 paramagnetic particles, and the circularizable probe is bound on its  
32 3' and 5' ends to adjacent but noncontiguous sequences in the target  
33 nucleic acid;
- 34 (b) separating the complex from unbound reactants and washing the  
35 complex;
- 36 (c) ligating the 3' and 5' ends of said circularizable signal probe with a  
37 ligating agent that joins nucleotide sequences such that a circular  
38 amplification probe is formed;
- 39 (d) adding a second ligand binding moiety capable of binding to and  
40 forming an affinity pair with said second ligand and a signal probe  
41 internally labeled with said second ligand to form a labeled complex;

- 42 (e) washing said labeled complex to remove unbound signal probe and  
43 ligand binding moieties; and  
44 (f) detecting said labeled complex, wherein the detection thereof indicates  
the presence of the target nucleic acid in the clinical sample.

- 1 3. A method for detecting a target nucleic acid in a sample comprising:  
2 (a) contacting said nucleic acid in said sample in a reaction vessel under  
3 conditions that allow nucleic acid hybridization between  
4 complementary sequences in nucleic acids with oligonucleotide probes  
5 in the presence of paramagnetic particles coated with a first ligand  
6 binding moiety, said oligonucleotide probes comprising one or more  
7 capture amplification probes, each having a 3' nucleotide sequence that  
8 is neither complementary nor hybridizable to a nucleotide sequence in  
9 the target nucleic acid, and a 5' nucleotide sequence that is  
10 complementary and hybridizable to a nucleotide sequence in the target  
11 nucleic acid, or a 5' nucleotide sequence that is neither complementary  
12 nor hybridizable to a nucleotide sequence in the target nucleic acid, and  
13 a 3' nucleotide sequence that is complementary and hybridizable to a  
14 nucleotide sequence in the target nucleic acid, each  
15 capture/amplification probe further having a first ligand bound to the  
16 non-complementary sequence of the probe, wherein said first ligand is  
17 capable of binding to and forming an affinity pair with said first ligand  
18 binding moiety coated onto said paramagnetic particles; said  
19 oligonucleotide probes further comprising a circularizable probe  
20 having 3' and 5' regions that are complementary to adjacent but  
21 noncontiguous sequences in the target nucleic acid, said 3' and 5'  
22 regions separated by a linker region that is neither complementary nor

- 23 hybridizable to a nucleotide sequence in the target nucleic acid and  
24 wherein said linker region comprises at least one pair of adjacent  
25 nucleotide sequences each pair of which is complementary and  
26 hybridizable to the 5' and 3' nucleotide sequences of a signal probe,  
27 such that a complex is formed comprising the target nucleic acid,  
28 circularizable probe, capture/amplification probes and paramagnetic  
29 particles, wherein the capture/amplification probes are hybridized to  
30 the complementary nucleotide sequences in the target nucleic acid and  
31 are bound to the paramagnetic particles through the binding of the first  
32 ligand on the capture/amplification probe to the first ligand binding  
33 moiety on the paramagnetic particles, and the circularizable probe is  
34 bound on its 3' and 5' ends to adjacent but noncontiguous sequences in  
35 the target nucleic acid;
- 36 (b) separating the complex from unbound reactants and washing the  
37 complex;
- 38 (c) adding a ligating agent that joins nucleotides sequences and adding a  
39 multiplicity of signal probes having 3' and 5' nucleotide sequences that  
40 are complementary and hybridizable to adjacent regions of the linker  
41 region of the circular probe bound to the target, or of other signal  
42 probes, and having linker regions comprising at least one pair of  
43 adjacent nucleotide sequences that are complementary and  
44 hybridizable to the 5' and 3' nucleotide sequences of one of the  
45 multiplicity of signal probes, such that a cluster of circular molecules is  
46 formed on the target nucleic acid;
- 47 (d) washing the target bound cluster to remove probes not bound to the  
48 target nucleic acid; and



- 49           (e)     detecting said target bound cluster, wherein the detection thereof  
                  indicates the presence of the target nucleic acid in the clinical sample.

- 1     4.     A method for in situ detection of a target nucleic acid in a sample comprising  
2           the steps of:
- 3           (a)     preparing a tissue sample from the histological specimen to be  
4                    analyzed for the presence of the target nucleic acid;
- 5           (b)     washing said tissue sample;
- 6           (c)     adding a circularizable signal probe having 3' and 5' regions that are  
7                    complementary to adjacent but noncontiguous sequences in the target  
8                    nucleic acid, said 3' and 5' regions separated by a linker region that is  
9                    neither complementary nor hybridizable to a nucleotide sequence in the  
10                  target nucleic acid wherein said linker region is labeled with a ligand,  
11                  such that a complex is formed comprising the target nucleic acid and  
12                  circularizable probe;
- 13          (d)     ligating the 3' and 5' ends of said circularizable signal probe with a  
14                  ligating agent that joins nucleotide sequences such that a circular  
15                  amplification probe is formed;
- 16          (e)     washing the complex;
- 17          (f)     adding a ligand binding moiety capable of binding to and forming an  
18                  affinity pair with said ligand and a signal probe internally labeled with  
19                  said ligand to form a labeled complex;
- 20          (g)     washing said labeled complex to remove unbound signal probe and  
21                  ligand binding moieties; and
- 22          (h)     detecting said labeled complex, wherein the detection thereof indicates  
23                  the presence of the target nucleic acid in the clinical sample.

- 1     5.     A method for in situ detection of a target nucleic acid in a sample comprising  
2           the steps of:
- 3           (a)     preparing a tissue sample from the histological specimen to be  
4                   analyzed for the presence of the target nucleic acid;
- 5           (b)     washing said tissue sample;
- 6           (c)     adding a circularizable probe having 3' and 5' regions that are  
7                   complementary to adjacent but noncontiguous sequences in the target  
8                   nucleic acid, said 3' and 5' regions separated by a linker region that is  
9                   neither complementary nor hybridizable to a nucleotide sequence in the  
10                  target nucleic acid and wherein said linker region comprises at least  
11                  one pair of adjacent nucleotide sequences each pair of which is  
12                  complementary and hybridizable to the 5' and 3' nucleotide sequences  
13                  of a signal probe, such that a complex is formed comprising the target  
14                  nucleic acid and circularizable probe, wherein the circularizable probe  
15                  is bound on its 3' and 5' ends to adjacent but noncontiguous sequences  
16                  in the target nucleic acid;
- 17          (d)     adding a ligating agent that joins nucleotides sequences and adding a  
18                  multiplicity of signal probes having 3' and 5' nucleotide sequences that  
19                  are complementary and hybridizable to adjacent regions of the linker  
20                  region of the circular probe bound to the target, or of other signal  
21                  probes, and having linker regions comprising at least one pair of  
22                  adjacent nucleotide sequences that are complementary and  
23                  hybridizable to the 5' and 3' nucleotide sequences of one of the  
24                  multiplicity of signal probes, such that a cluster of circular molecules is  
25                  formed on the target nucleic acid;
- 26          (e)     washing the target bound cluster to remove probes not bound to the  
27                  target nucleic acid; and

- 28 (f) detecting said target bound cluster, wherein the detection thereof  
29 indicates the presence of the target nucleic acid in the clinical sample.
- 1 6. The method of Claim 1 wherein said first and said second ligands are  
2 independently selected from the group consisting of biotin, antigens, haptens,  
3 antibodies, heavy metal derivatives, and polynucleotides including poly dG,  
polydT, polydC, polydA and polyU.
- 1 7. The method of Claim 1 wherein said first and said second ligand binding  
2 moieties are independently selected from the group consisting of streptavidin,  
3 avidin, antibodies, antigens, thio groups and polynucleotides including poly  
dC, poly dA, poly dG, poly dT and poly U.
- 1 8. The method of Claim 1 wherein said first ligand is biotin and said first ligand  
binding moiety is streptavidin.
- 1 9. The method of Claim 1 wherein said second ligand is biotin and said second  
ligand binding moiety is streptavidin.
10. The method of Claim 1 wherein said ligating agent is a DNA or RNA ligase.
- 1 11. The method of Claim 1 further comprising subjecting the paramagnetic  
2 particles to a magnetic field sufficient to prevent loss of the particles from the  
reaction vessel during the separating and washing steps.
- 1 12. The method of Claim 2 wherein said first and said second ligands are  
2 independently selected from the group consisting of biotin, antigens, haptens,

- 3 antibodies, heavy metal derivatives, and polynucleotides including poly dG,  
polydT, polydC, polydA and polyU.
- 1 13. The method of Claim 2 wherein said first and said second ligand binding  
2 moieties are independently selected from the group consisting of streptavidin,  
3 avidin, antibodies, antigens, thio groups and polynucleotides including poly  
dC, poly dA, poly dG, poly dT and poly U.
- 1 14. The method of Claim 2 wherein said first ligand is biotin and said first ligand  
binding moiety is streptavidin.
- 1 15. The method of Claim 2 wherein said second ligand is biotin and said second  
ligand binding moiety is streptavidin.
16. The method of Claim 2 wherein said ligating agent is a DNA or RNA ligase.
- 1 17. The method of Claim 2 further comprising subjecting the paramagnetic  
2 particles to a magnetic field sufficient to prevent loss of the particles from the  
reaction vessel during the separating and washing steps.
- 1 18. The method of Claim 3 wherein said first and said second ligands are  
2 independently selected from the group consisting of biotin, antigens, haptens,  
3 antibodies, heavy metal derivatives, and polynucleotides including poly dG,  
polydT, polydC, polydA and polyU.
- 1 19. The method of Claim 3 wherein said first and said second ligand binding  
2 moieties are independently selected from the group consisting of streptavidin,

- 3           avidin, antibodies, antigens, thio groups and polynucleotides including poly  
dC, poly dA, poly dG, poly dT and poly U.
- 1    20.    The method of Claim 3 wherein said first ligand is biotin and said first ligand  
binding moiety is streptavidin.
- 1    21.    The method of Claim 3 wherein said second ligand is biotin and said second  
ligand binding moiety is streptavidin.
22.    The method of Claim 3 wherein said ligating agent is a DNA or RNA ligase.
- 1    23.    The method of Claim 3 further comprising subjecting the paramagnetic  
2           particles to a magnetic field sufficient to prevent loss of the particles from the  
reaction vessel during the separating and washing steps.
- 1    24.    A method for detecting an antigen in a sample comprising:  
2           (a)    contacting said antigen in said sample with an antibody to said antigen  
3                wherein said antibody is labeled with a ligand under conditions  
4                whereby an antigen/antibody complex is formed;  
5           (b)    washing said complex to remove unbound antibody;  
6           (c)    adding ligand-binding molecules and a ligand-labeled nucleic acid  
7                probe under conditions whereby a complex of antigen, ligand-labeled  
8                antibody, ligand-binding molecules, and ligand-labeled nucleic acid  
9                probes is formed; and  
10          (d)    detecting said complex, wherein detection thereof is indicative of the  
11                presence of said antigen in said sample.

- 1    25.    A method for detecting an antibody in a sample comprising:
- 2           (a)    contacting said antibody in said sample with an antigen to said
- 3                    antibody wherein said antigen is labeled with a ligand under conditions
- 4                    whereby an antigen/antibody complex is formed;
- 5           (b)    washing said complex to remove unbound antigen;
- 6           (c)    adding ligand-binding molecules and a ligand-labeled nucleic acid
- 7                    probe under conditions whereby a complex of antibody, ligand-labeled
- 8                    antigen, ligand-binding molecules, and ligand-labeled nucleic acid
- 9                    probes is formed; and
- 10          (d)    detecting said complex, wherein detection thereof is indicative of the
- 11                    presence of said antibody in said sample.

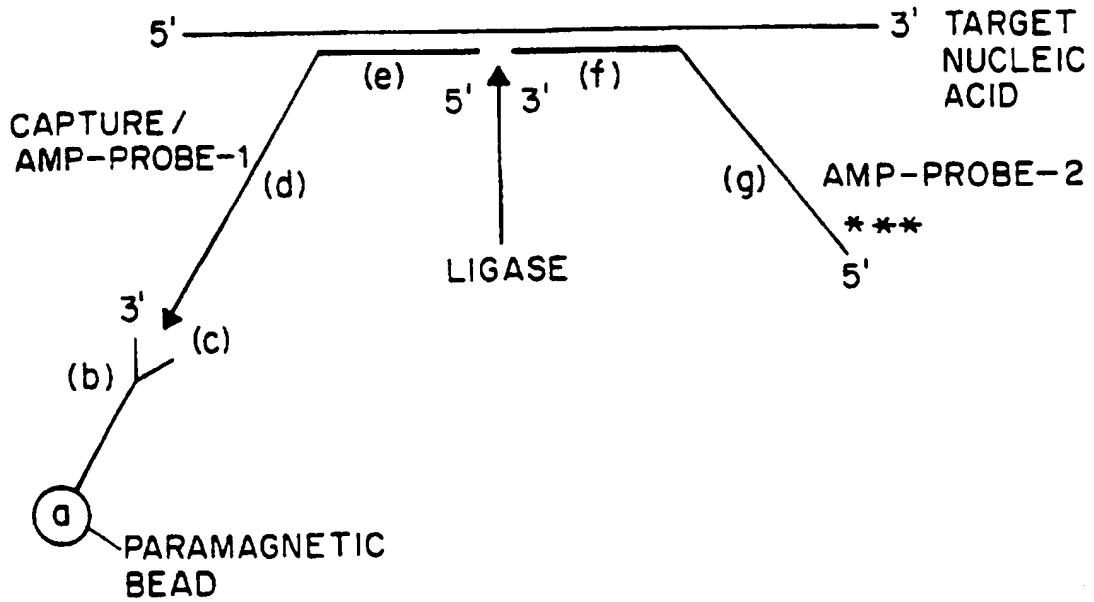


FIG. 1

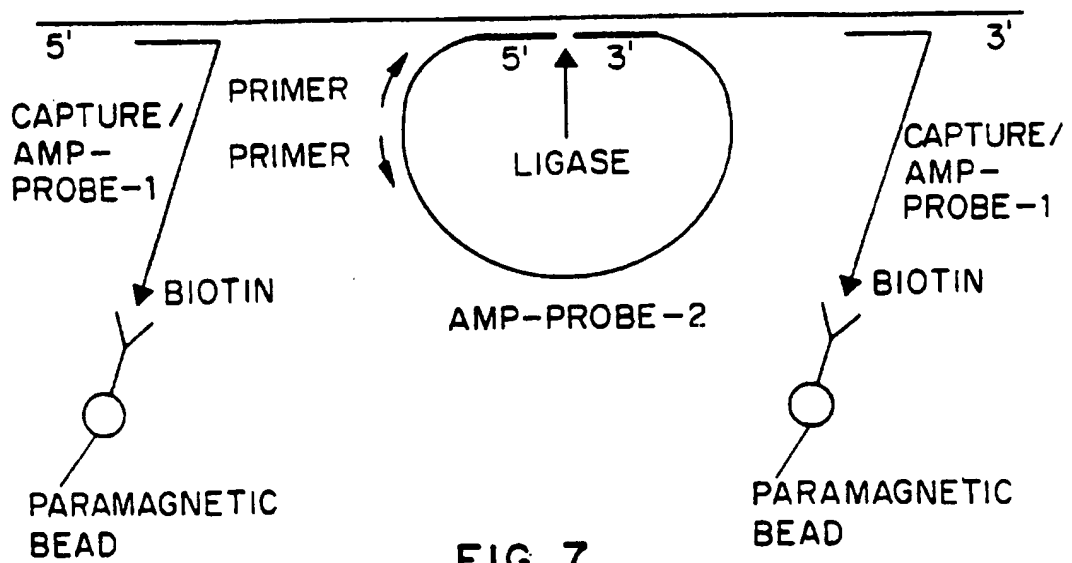


FIG. 7

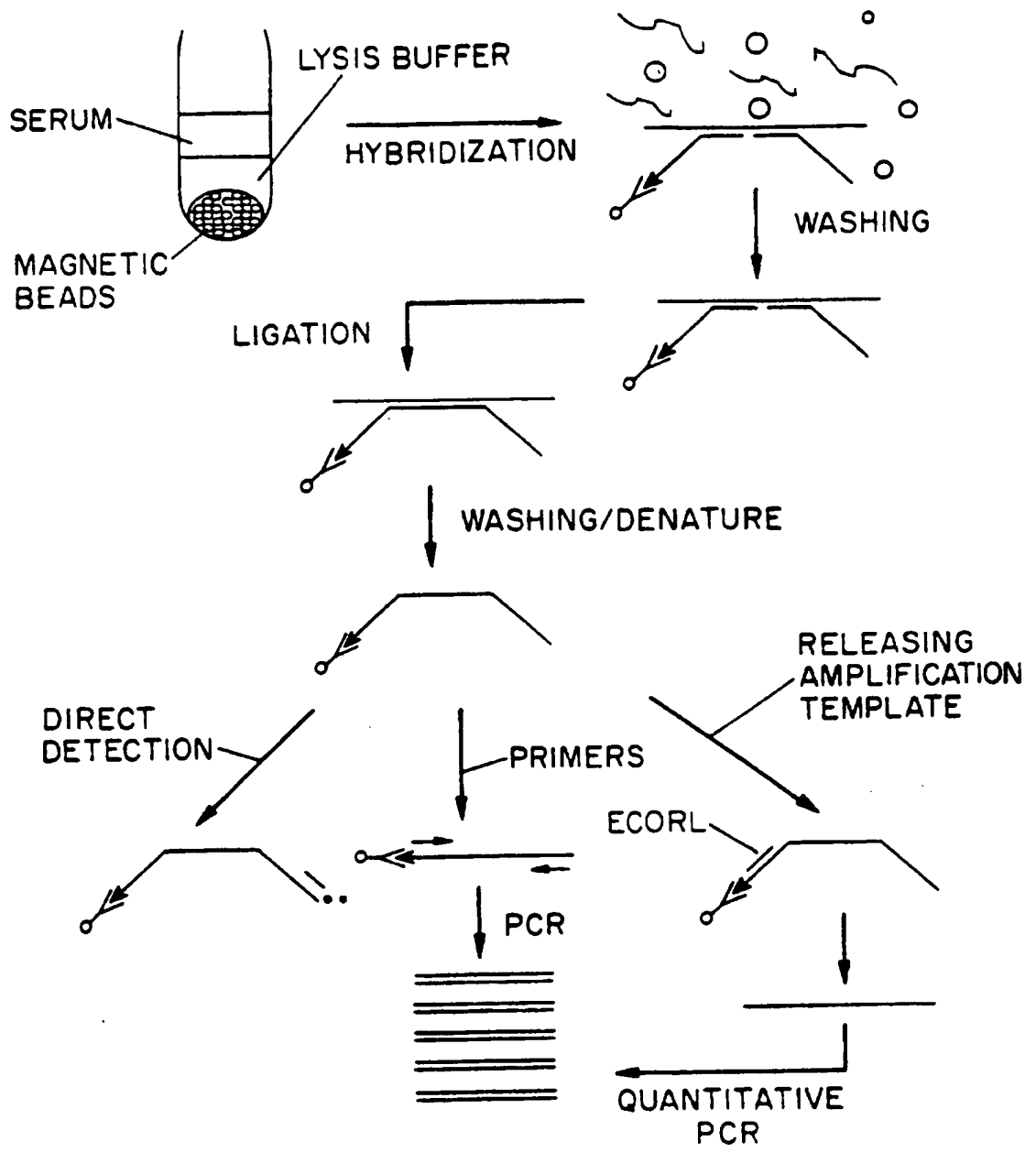


FIG. 2



A B



FIG. 3

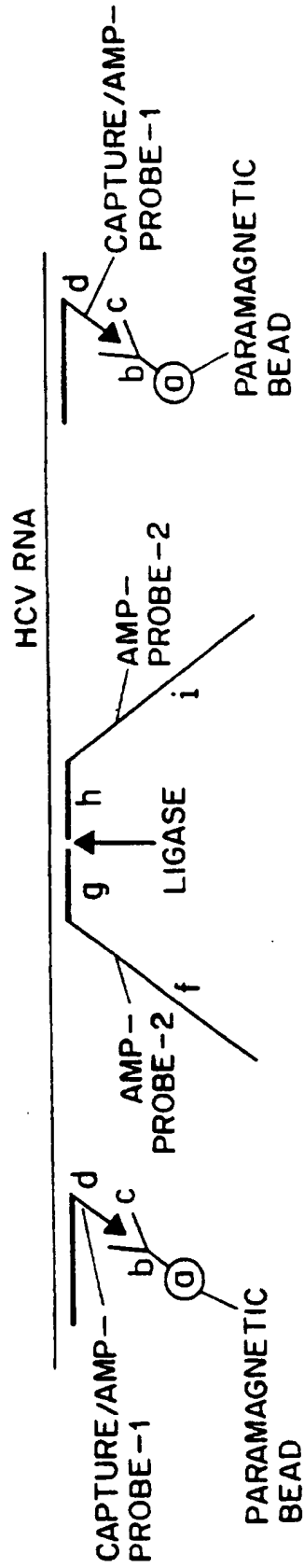


FIG. 4

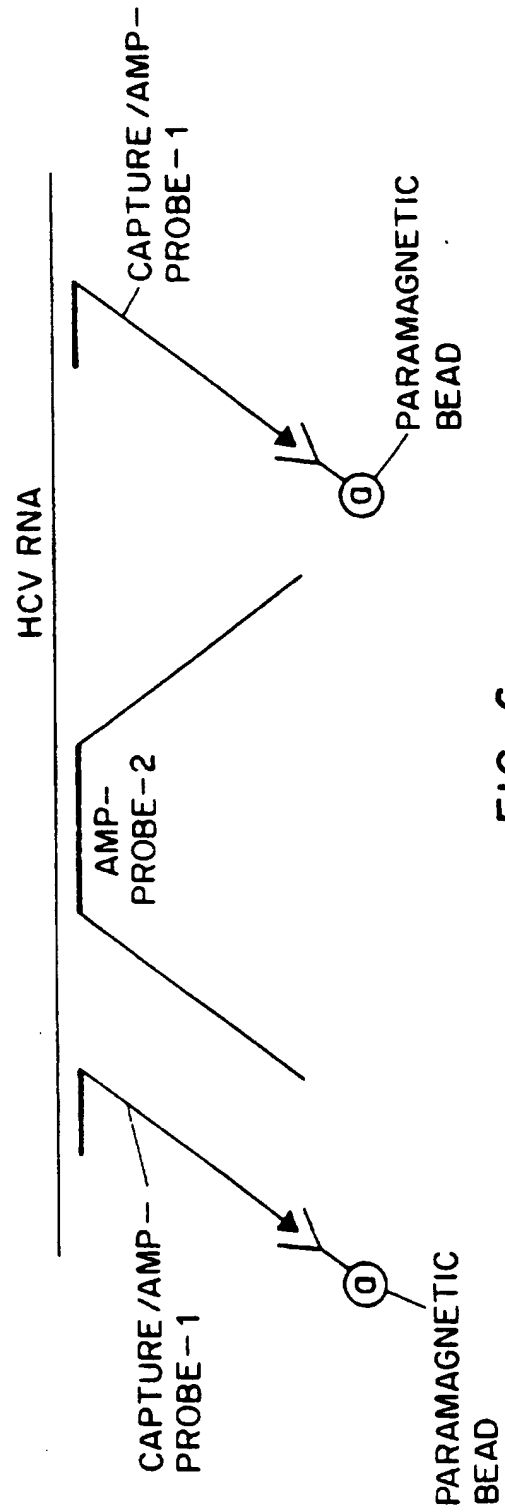


FIG. 6

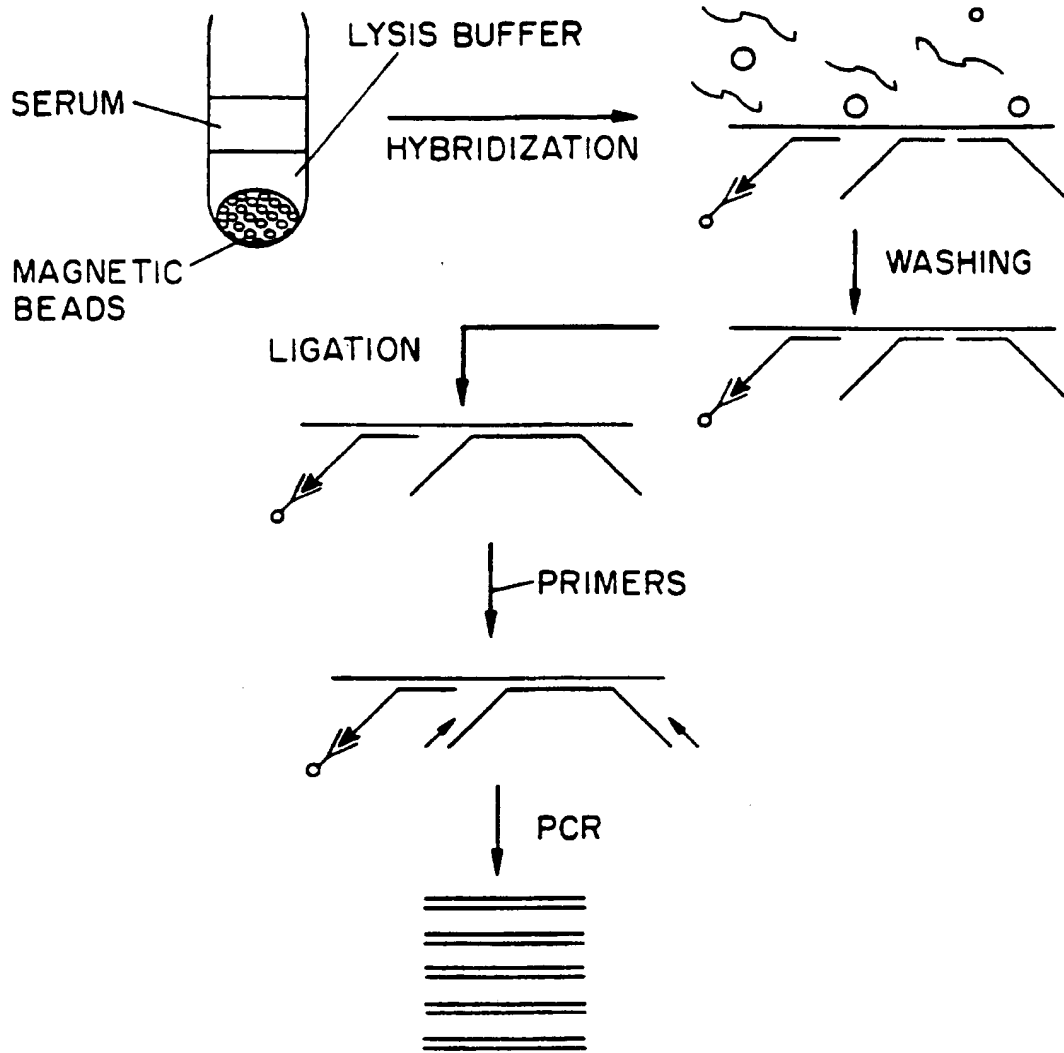


FIG. 5

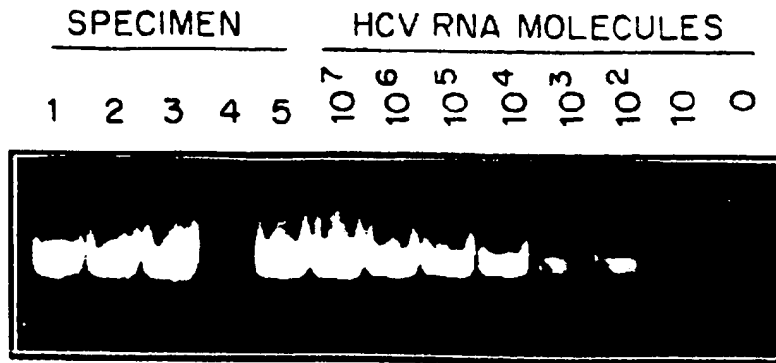


FIG. 8

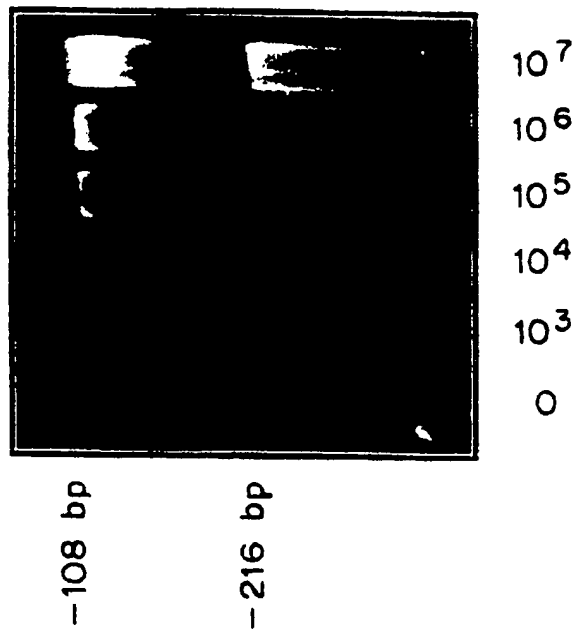


FIG. 9

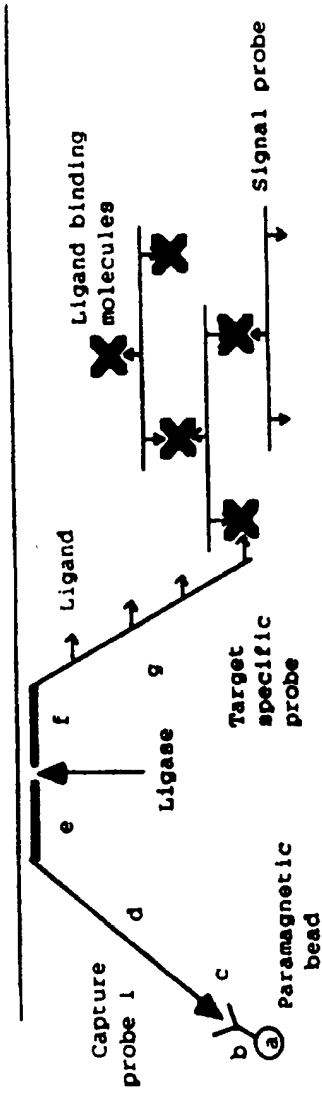


FIGURE 10

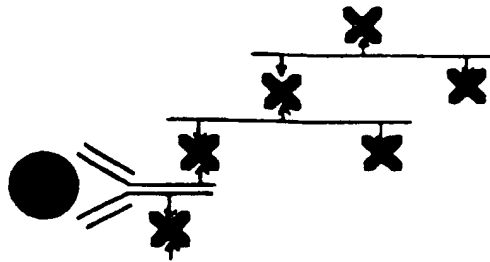


FIGURE 11

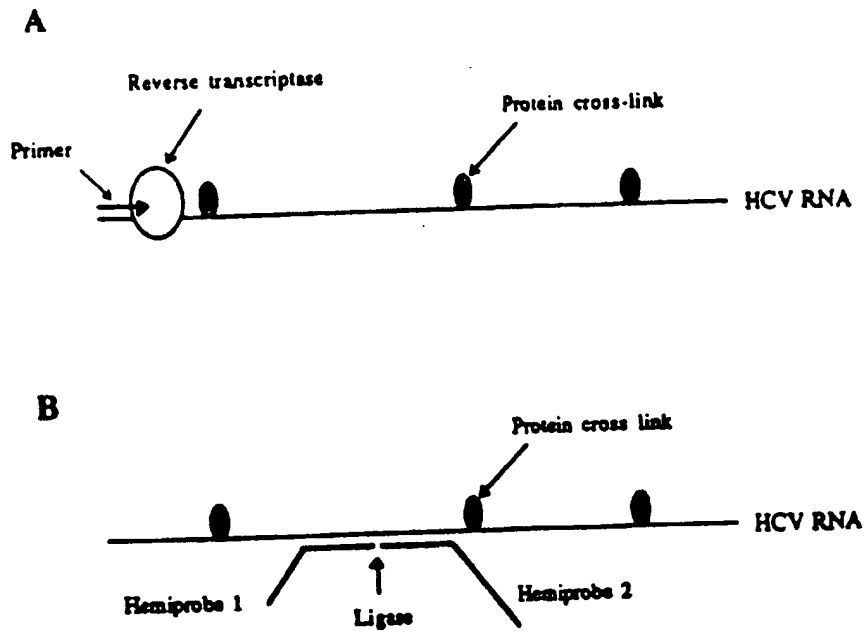


FIGURE 12

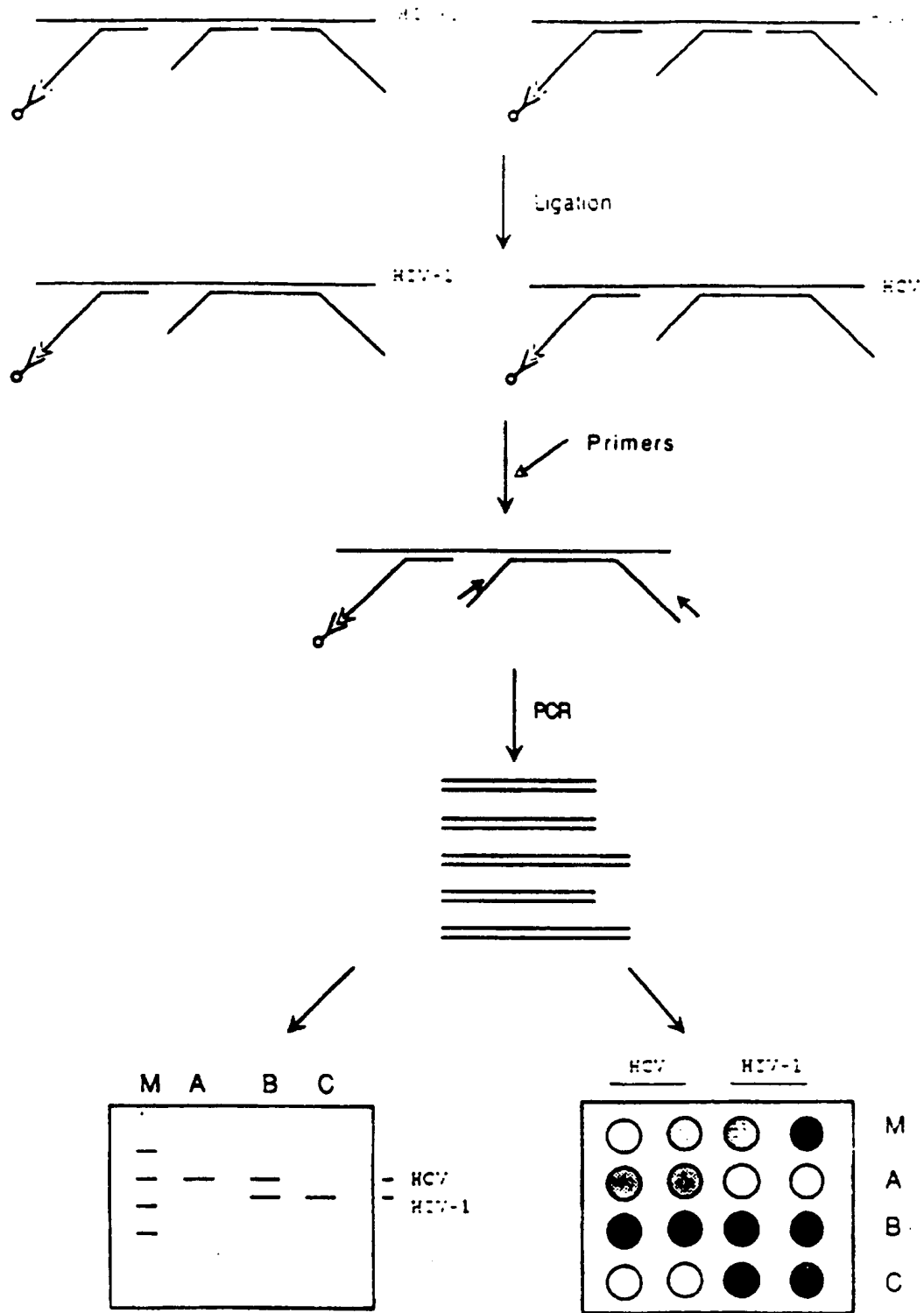


FIGURE 13



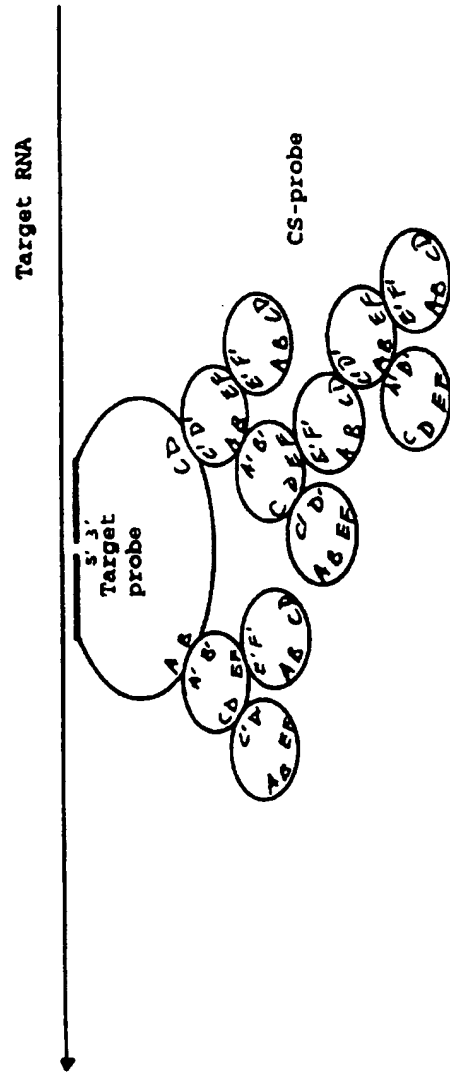


FIGURE 14

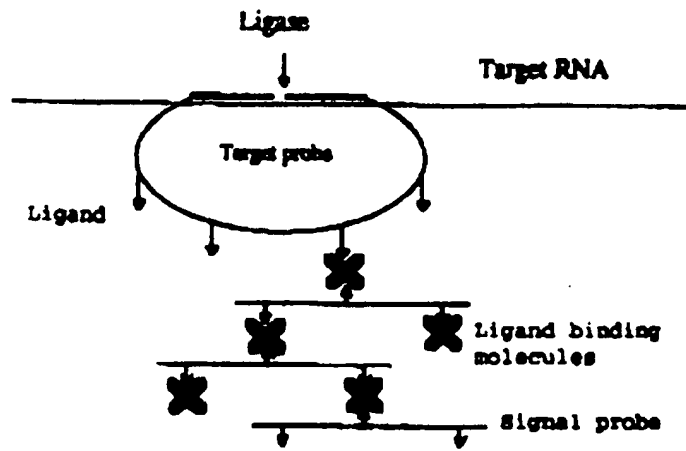
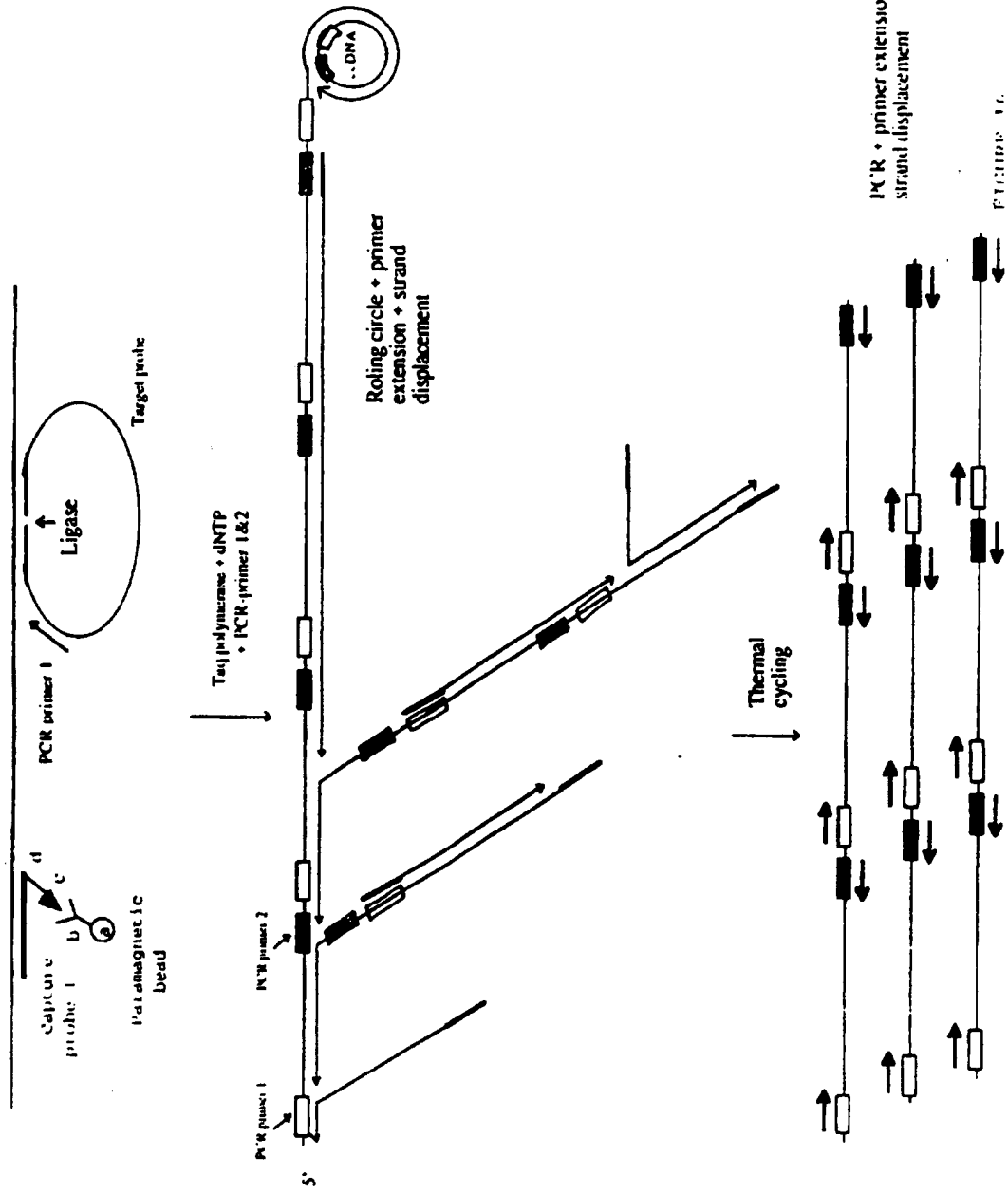


FIGURE 15



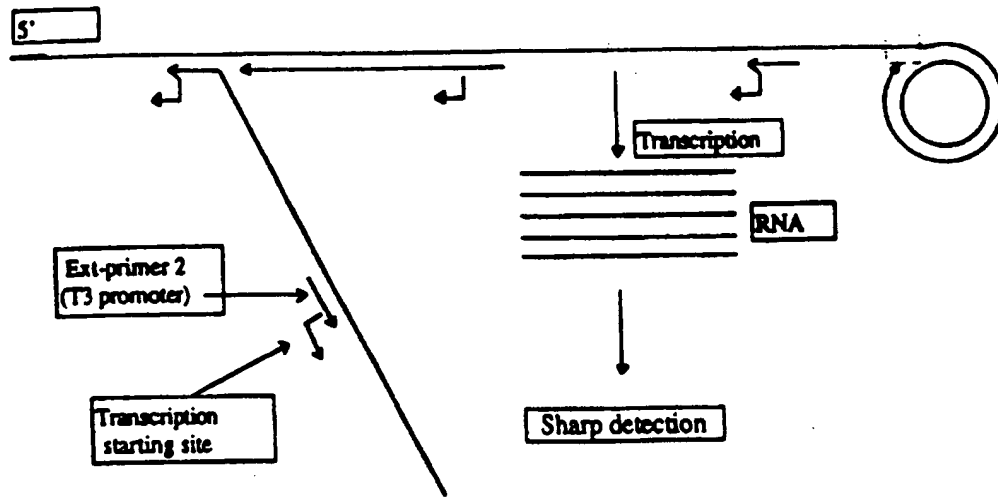


FIGURE 17



FIGURE 18

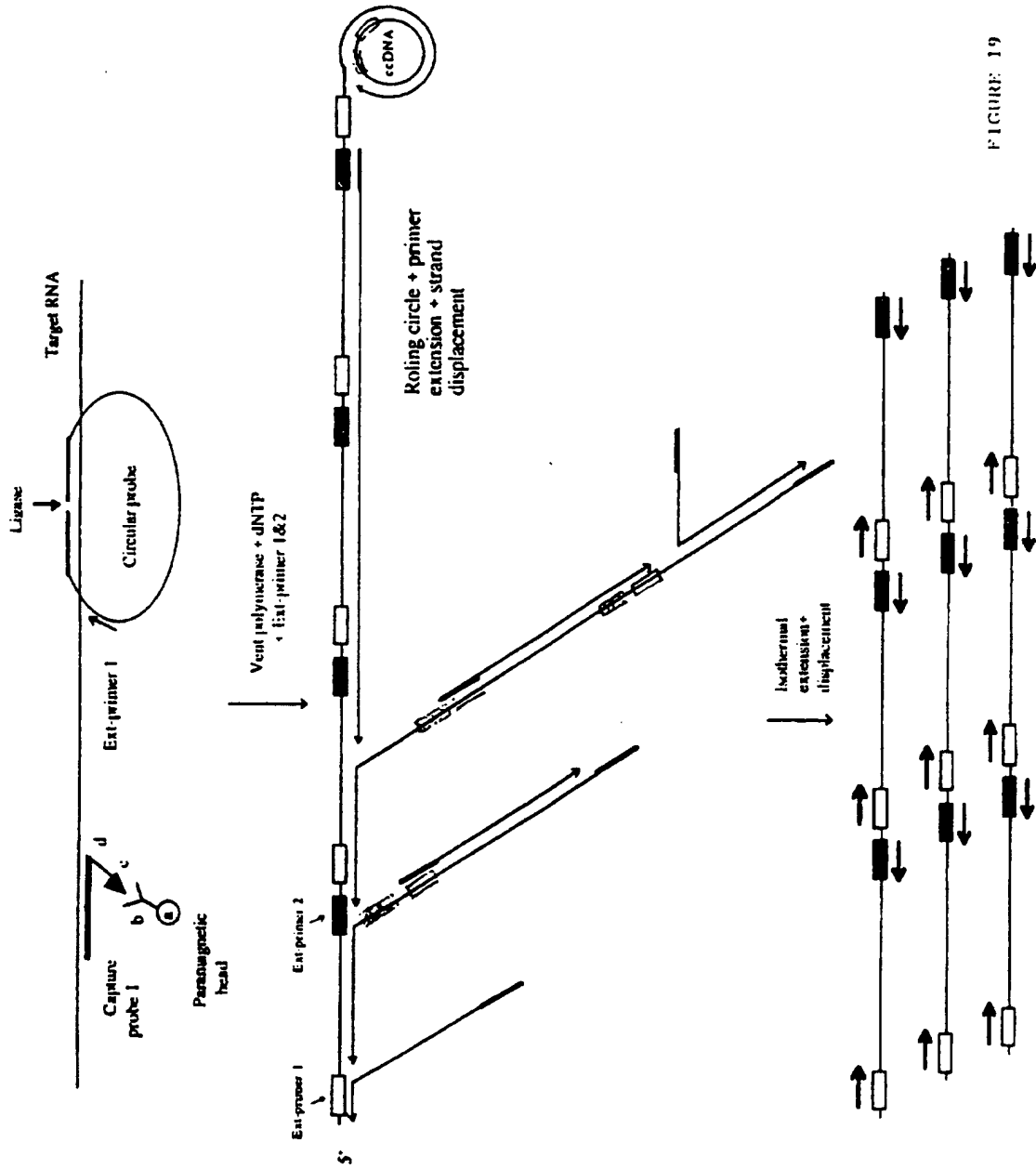


FIGURE 19

Rolling circle + primer  
extension

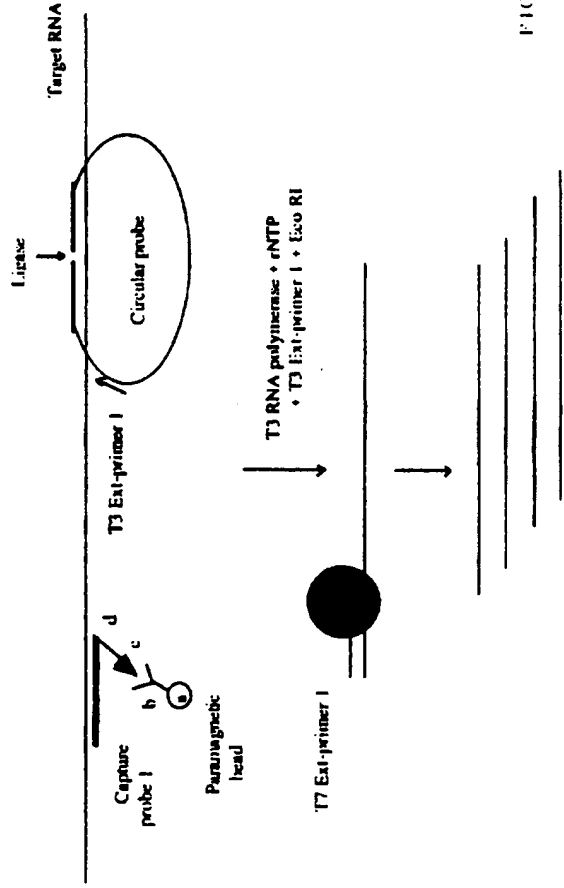


FIGURE 20

INTERNATIONAL SEARCH REPORT

International application No.

PCT/US97/13390

A. CLASSIFICATION OF SUBJECT MATTER

IPC(6) : C12Q 1/68, 1/70; C12P 19/34; C07H 21/02, 21/04

US CL : 435/6, 5, 91.2; 536 23.1, 24.3, 24.33

According to International Patent Classification (IPC) or to both national classification and IPC

B. FIELDS SEARCHED

Minimum documentation searched (classification system followed by classification symbols)

U.S. : 435/6, 5, 91.2; 536 23.1, 24.3, 24.33

Documentation searched other than minimum documentation to the extent that such documents are included in the fields searched

Electronic data base consulted during the international search (name of data base and, where practicable, search terms used)

Please See Extra Sheet

C. DOCUMENTS CONSIDERED TO BE RELEVANT

| Category* | Citation of document, with indication, where appropriate, of the relevant passages   | Relevant to claim No. |
|-----------|--|-----------------------|
| Y         | Nilsson et al. Padlock Probes: Circularizing Oligonucleotides for Localized DNA Detection. Science. 30 September 1994, Volume 265, pages 2085-2088, see entire document. | 1-23                  |
| Y         | US 5,200,314 A (URDEA) 06 April 1993, see entire document.   | 1-23                  |
| Y         | US 5,407,798 A (MARTINELLI et al.) 18 April 1995, see entire document.   | 1-23                  |
| Y         | US 5,462,852 A (ARTHUR et al.) 31 October 1995, column 12, lines 3-11.   | 24, 25                |

Further documents are listed in the continuation of Box C.

See patent family annex.

\*

Special categories of cited documents:

\*A\*

document defining the general state of the art which is not considered to be of particular relevance

\*E\*

earlier document published on or after the international filing date

\*L\*

document which may throw doubts on priority claim(s) or which is cited to establish the publication date of another citation or other special reasons (as specified)

\*O\*

document referring to an oral disclosure, use, exhibition or other means

\*P\*

document published prior to the international filing date but later than the priority date claimed

\*T\*

later document published after the international filing date or priority date and not in conflict with the application but cited to understand the principle or theory underlying the invention

\*X\*

document of particular relevance; the claimed invention cannot be considered novel or cannot be considered to involve an inventive step when the document is taken alone

\*Y\*

document of particular relevance; the claimed invention cannot be considered to involve an inventive step when the document is combined with one or more other such documents, such combination being obvious to a person skilled in the art

\*A\*

document member of the same patent family

Date of the actual completion of the international search

28 AUGUST 1997

Date of mailing of the international search report

29 OCT 1997

Name and mailing address of the ISA/US

Commissioner of Patents and Trademarks

Box PCT

Washington, D.C. 20231

Facsimile No. (703) 305-3230

Authorized officer

DIANNE REES

Telephone No. (703) 308-0196



**INTERNATIONAL SEARCH REPORT**

International application No.  
PCT/US97/13390

**B. FIELDS SEARCHED**

Electronic data bases consulted (Name of data base and where practicable terms used):

APS, BIOTECHDS, BIOTECHABS, CABA, CAPLUS, EMBASE, MEDLINE, EUROPATFULL, JAPIO, USPATFULL, WPIDS

search terms: circular probes, padlock probes, in situ, ligation, OLA, paramagnetic, magnetic, superparamagnetic, solid supports, immuno-PCR.

**This Page is Inserted by IFW Indexing and Scanning  
Operations and is not part of the Official Record**

**BEST AVAILABLE IMAGES**

Defective images within this document are accurate representations of the original documents submitted by the applicant.

Defects in the images include but are not limited to the items checked:

- BLACK BORDERS**
- IMAGE CUT OFF AT TOP, BOTTOM OR SIDES**
- FADED TEXT OR DRAWING**
- BLURRED OR ILLEGIBLE TEXT OR DRAWING**
- SKEWED/SLANTED IMAGES**
- COLOR OR BLACK AND WHITE PHOTOGRAPHS**
- GRAY SCALE DOCUMENTS**
- LINES OR MARKS ON ORIGINAL DOCUMENT**
- REFERENCE(S) OR EXHIBIT(S) SUBMITTED ARE POOR QUALITY**
- OTHER:** \_\_\_\_\_

**IMAGES ARE BEST AVAILABLE COPY.**

**As rescanning these documents will not correct the image problems checked, please do not report these problems to the IFW Image Problem Mailbox.**